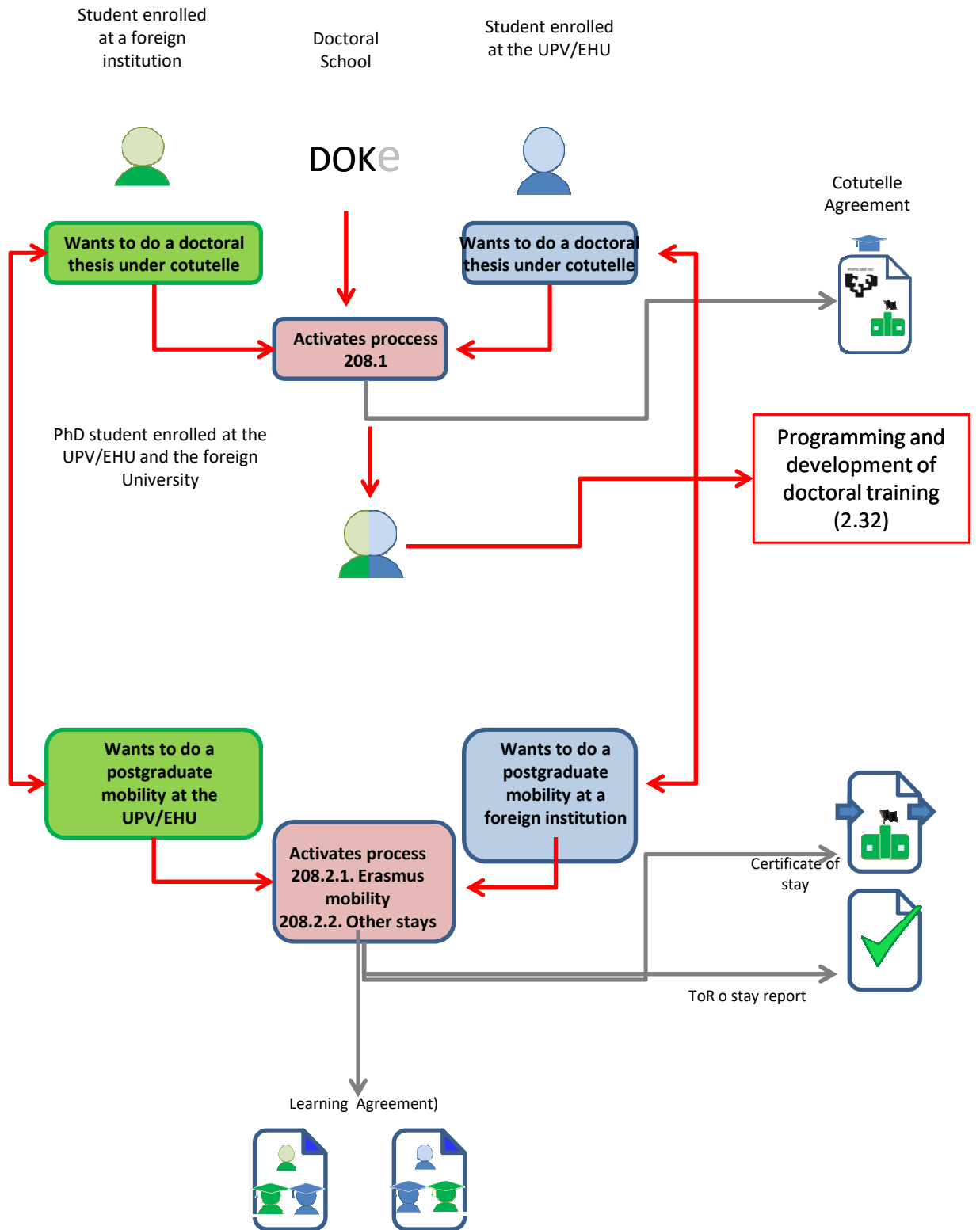
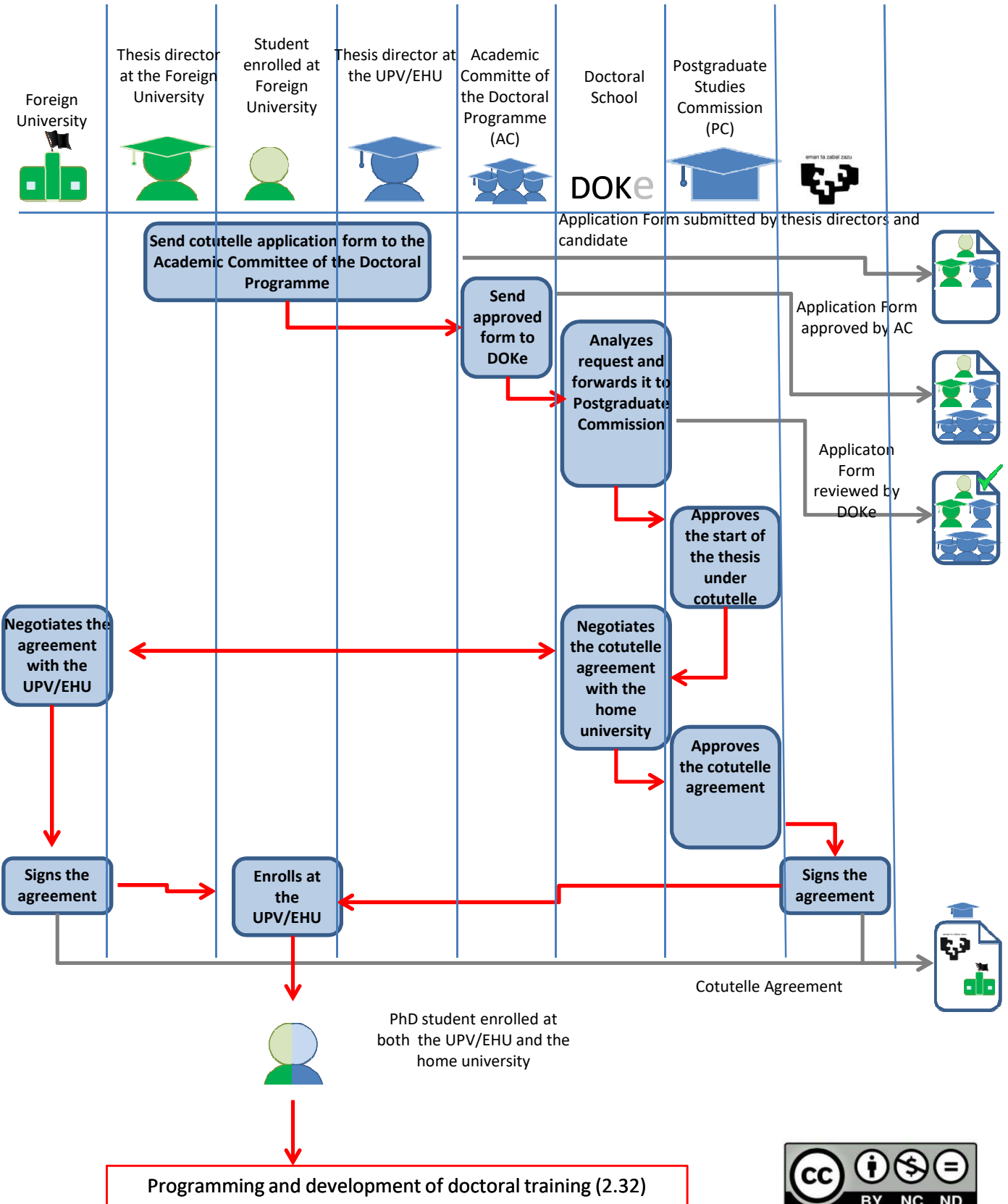


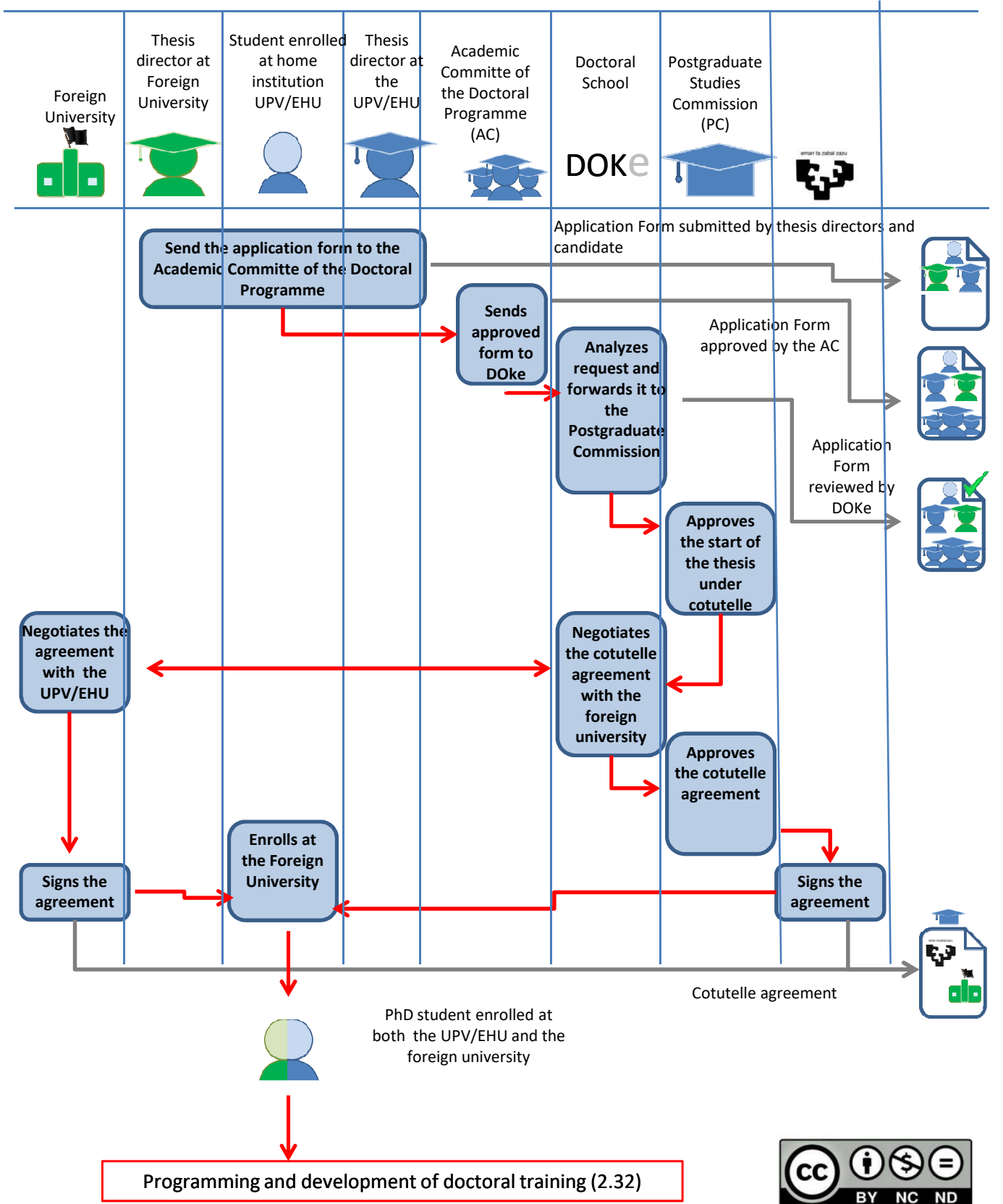
POSTGRADUATE INTERNATIONALIZATION(208)



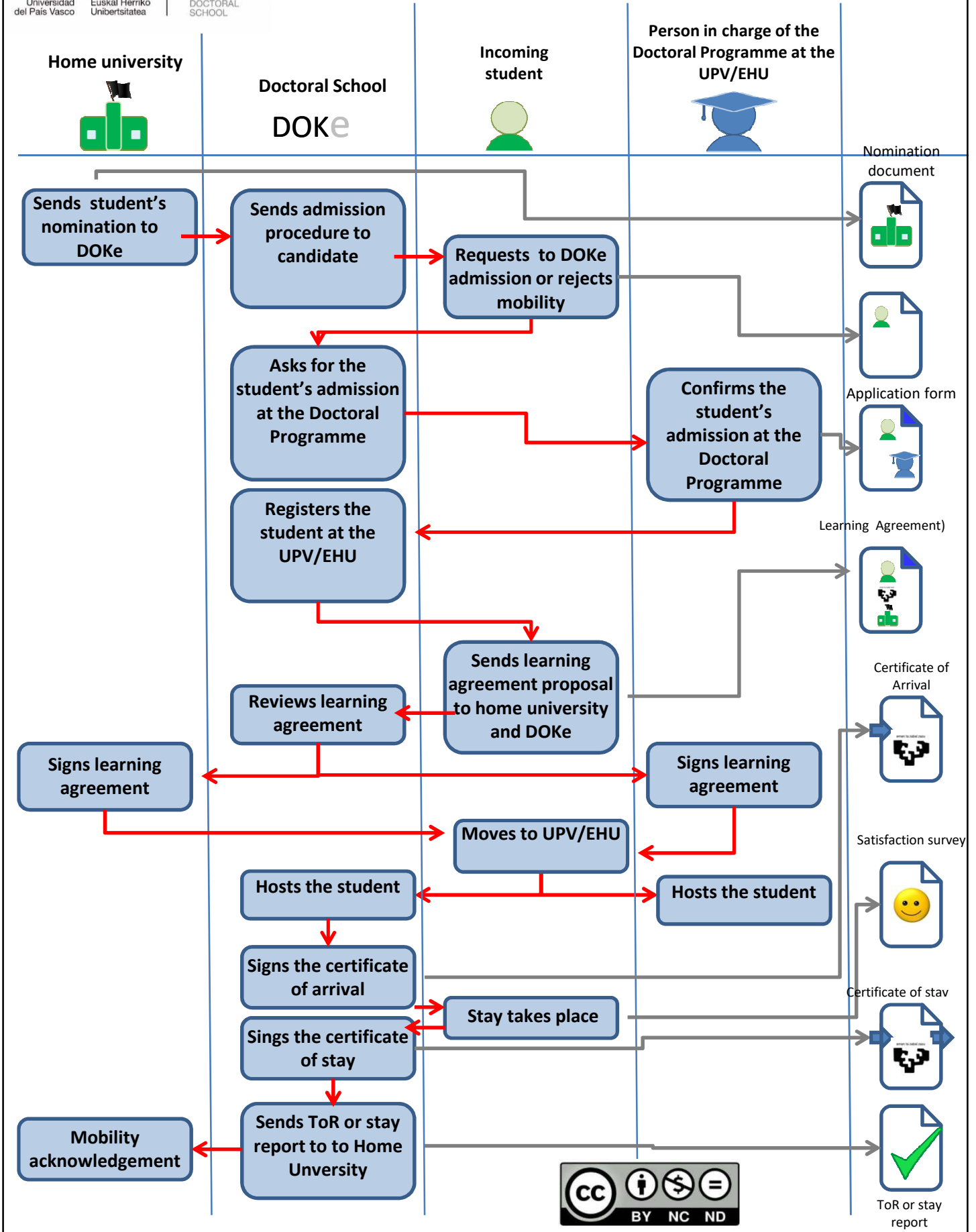
THESIS UNDER COTUTELLE : HOME INSTITUTION=FOREIGN UNIVERSITY (208.1.1)



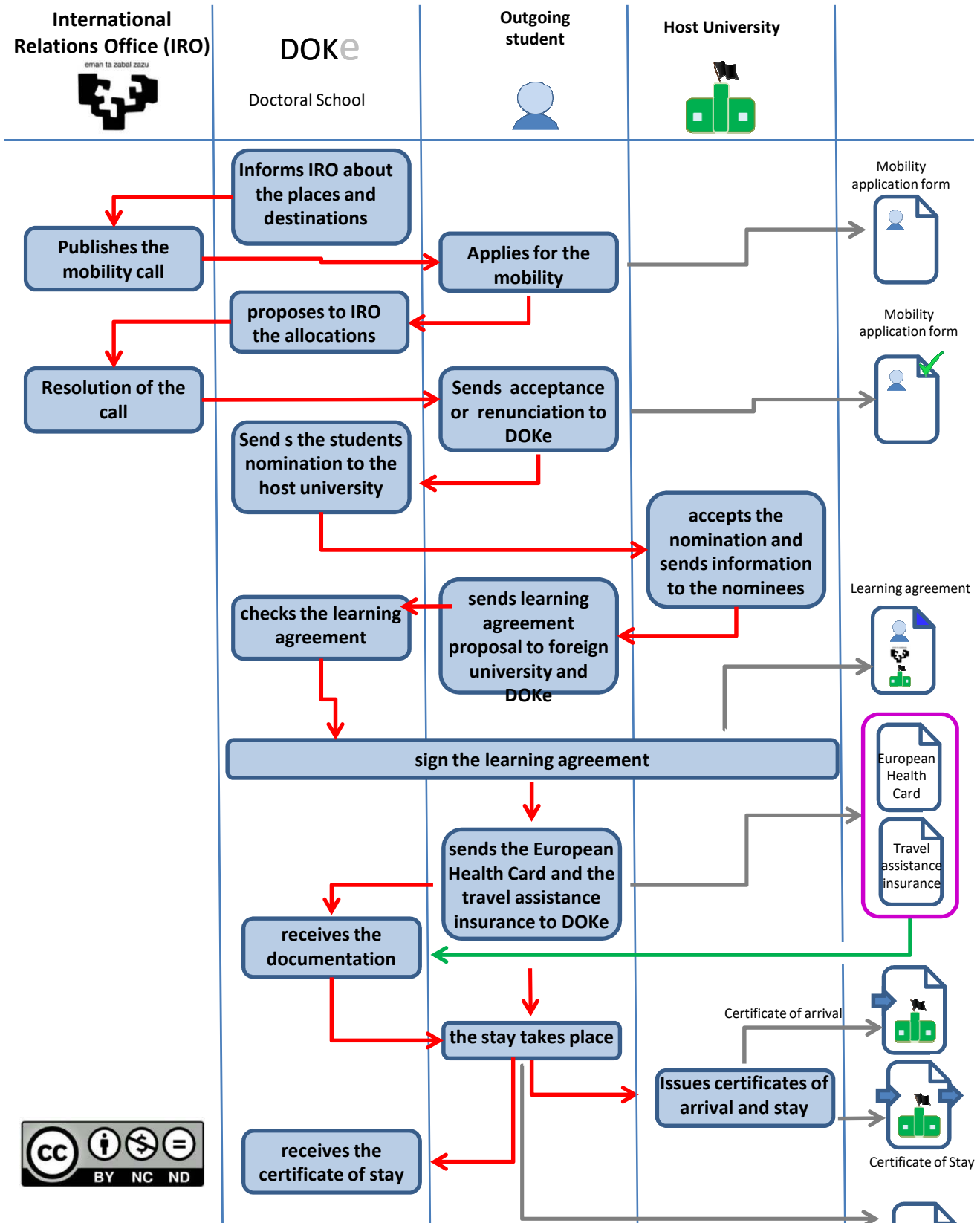
THESIS UNDER COTUTELLE: HOME INSTITUTION=UPV/EHU (208.1.2)



ERASMUS+ INCOMING MOBILITY (208.2.1.1)

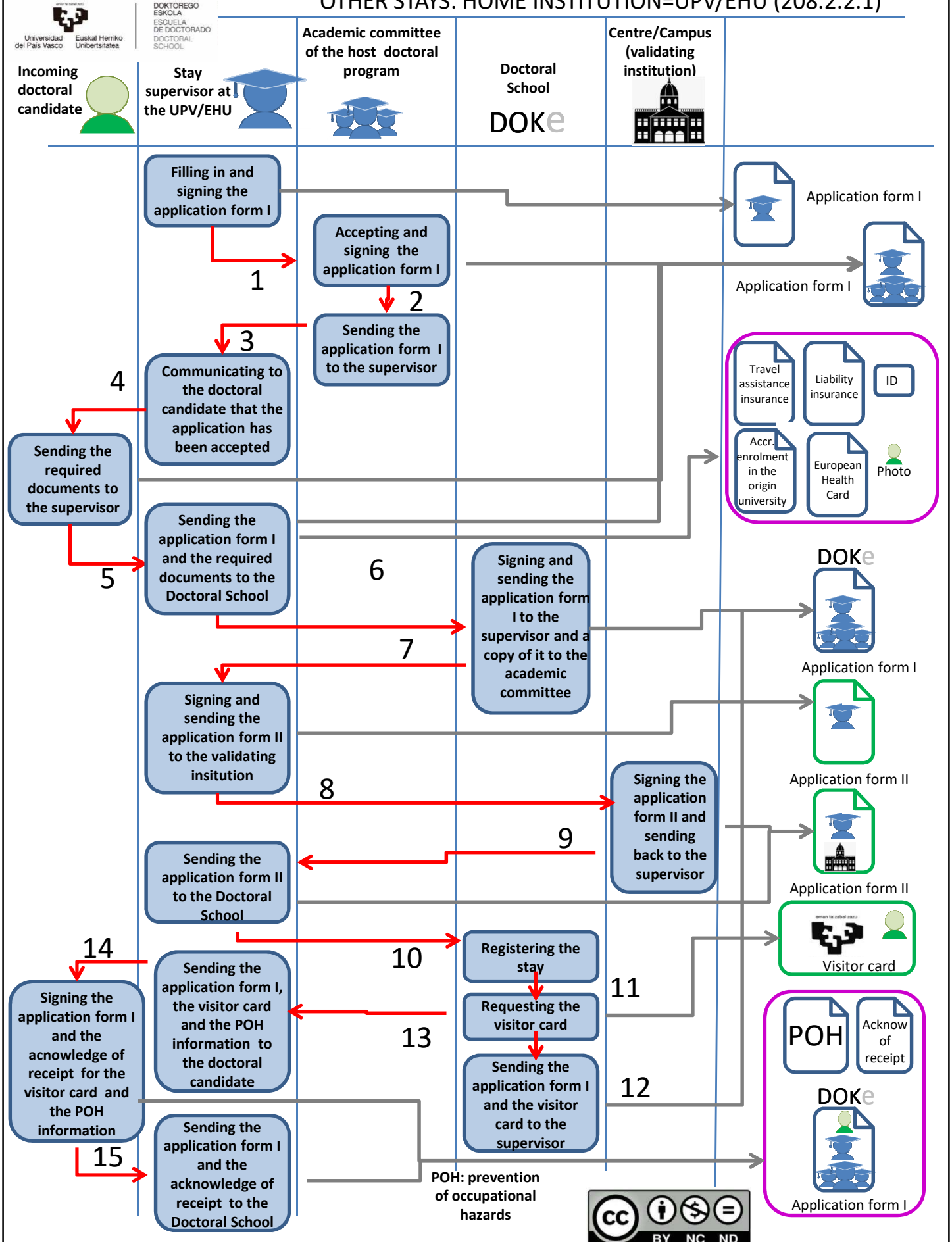


ERASMUS+ OUTGOING MOBILITY: (208.2.1.2)

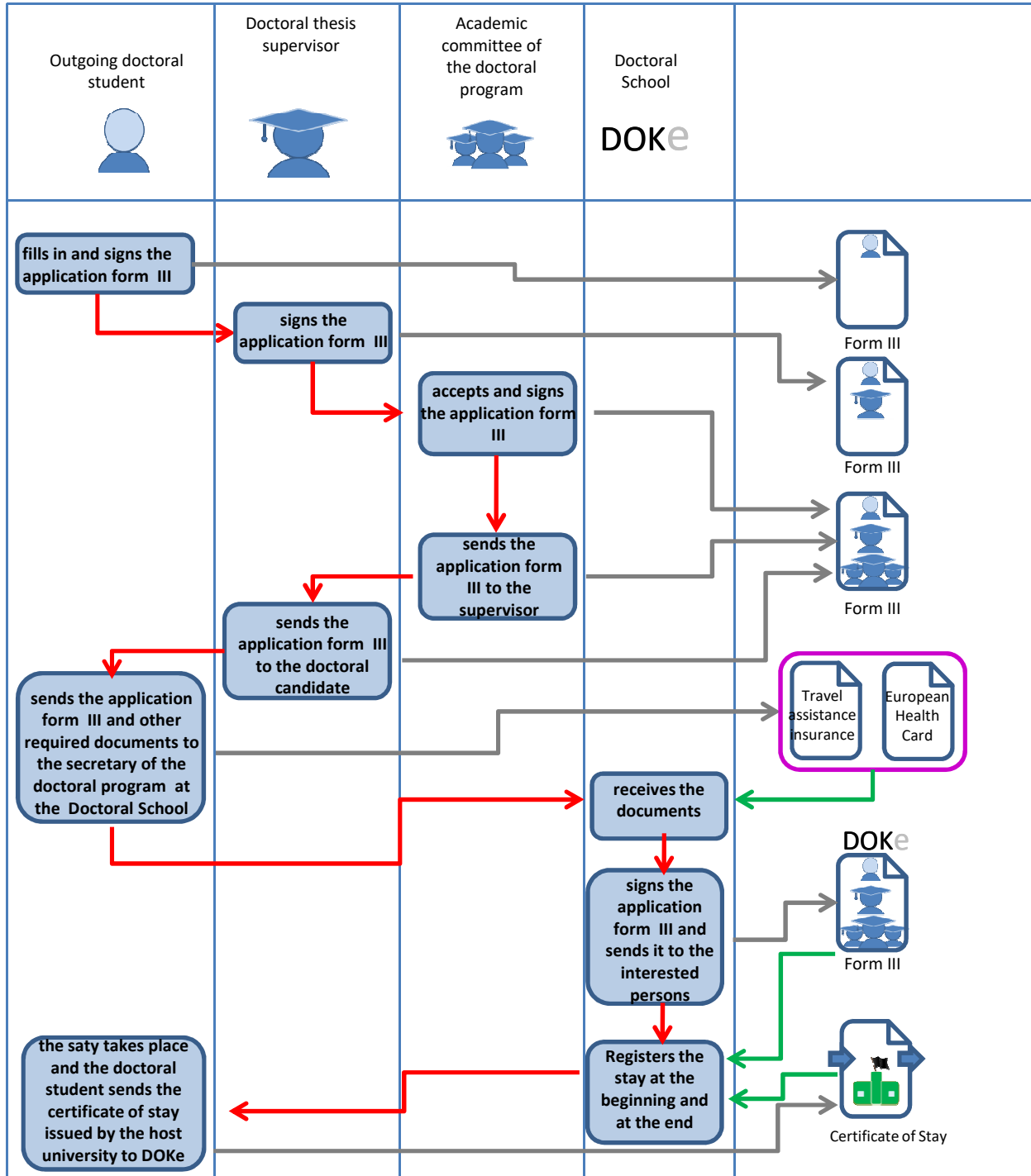


At the end of the stay, the doctoral student must include the activities related to the stay in the Activity Document of the corresponding academic year at GAUR.

OTHER STAYS: HOME INSTITUTION=UPV/EHU (208.2.2.1)



OTHER STAYS: HOME INSTITUTION=FOREIGN UNIVERSITY (208.2.2.2)



At the end of the stay, the doctoral student must include the activities related to the stay in the Activity Document of the corresponding academic year at GAUR.