

# Estadistics for December/2017

January 5, 2018

## Arina

In this brief document we show the usage of arina during December. This month 70491 computing days were used and the average use of the cluster was 61 %. Since the first of December 69571 computing days were used and the average use of the Arina cluster was 60 %. The figure shows the usage of Arina along the month. In the first table the usage of each user is shown. The third column indicates all the time each user has used for calculation during this month. The fourth column shows the average time that each job was waiting before it started running, in days units. In the second table, the same data as in table 1 collected by group is shown.

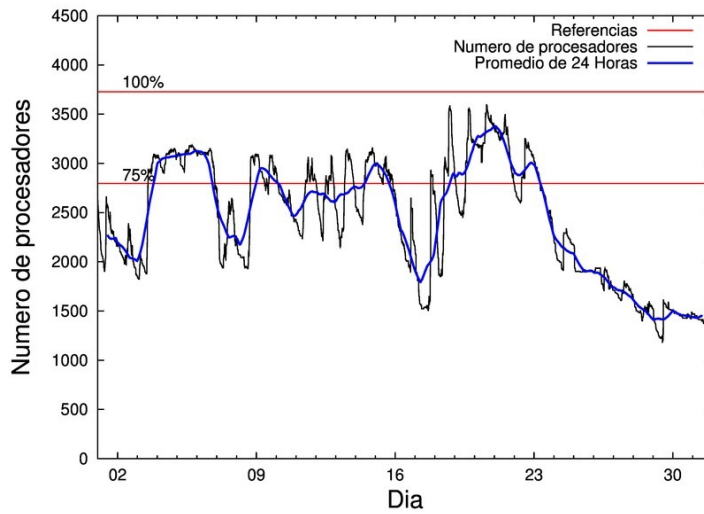


Figure 1: Cluster use. The blue line is a 24 hours average.

Table 1: Calculated time and waiting time in days of the users.

USER	GROUP	Calculated Days	Waiting Time
govzaxxr	polymat	14207.08	0.01
povhehea	poahh	9618.74	0.14
povrucif	polymat	9010.77	0.08
poamaxg	polymat	4991.98	0.06
poairurm	polymat	4879.11	0.05
scavinam	poemg	4356.20	0.01
enblairo	egune	2978.36	0.14
pobmabej	potmb	2444.64	0.02
kiadadag	pojju	2009.84	0.05
pobmugoj	pomps	1986.50	0.14
enxcacaj	egune	1966.49	0.06
pobcucua	polymat	1423.05	0.20
enxararo	egune	1353.20	0.08
pobgrgrs	pomps	1258.43	0.00
doxcarei	poemg	1141.30	0.03
poajejec	polymat	1047.51	0.04
poalocad	polymat	769.74	0.01
pobladej	poxlp	650.79	0.00
quamearx	qfila	543.22	0.00
qopgobee	qocpn	525.65	0.00
kiaolfeb	potss	511.91	0.00
fabusgui	qfjfg	419.24	0.41
dixsasam	pojju	357.98	0.00
kiasomal	qocpn	233.66	0.01
quaduree	qfila	190.01	0.05
kiaurbao	poxlp	167.75	0.00
wapgoesj	wakgg	139.52	0.00
fablozj	qfila	137.12	0.01
qobsalae	qambm	123.21	0.00
faaatnaa	faraz	115.05	0.01
quaurhei	qfjfg	113.28	0.09
qfpmamoh	qfila	101.85	0.01
ciazuulm	pojju	94.46	0.02
qoaaarecl	qofcm	69.92	0.00
qfbleoni	qfjfg	67.58	0.05
quxtaxxs	polymat	64.20	0.03
mtpmafel	mtgfa	59.45	0.00
qfbbaprj	qfila	55.37	0.00
poorloi	pojju	54.44	0.03
faavzae	qfila	50.94	0.00
kibderua	qofcm	43.43	0.00
wmpetali	wdaga	26.52	0.00
poagafm	pojju	26.48	0.02
poasibrd	poxlp	25.56	0.00
qobsogax	jiads	18.27	0.00
kixsasal	pojju	11.92	0.00
quxlegoa	qfjfg	11.56	0.00

acplaing	jiads	7.81	0.12
poaszsze	poxlp	7.44	0.00
webogare	arinadm	6.72	0.01
quarafam	qfjfg	3.24	0.00
qobpamap	qocpn	3.19	0.01
qoprualg	qofpg	2.86	0.00
favecvep	qfjfg	1.33	0.09
pobfoese	poxlp	1.26	0.00
juranga004	potmb	1.13	0.00
bgpmafea	bgjal	0.94	0.00
qobzazag	qocpn	0.42	0.00
poainugn	pojoo	0.35	0.00
poatealx	pojoo	0.22	0.00
wuppobam	wuebp	0.20	0.00
pobmelat	arinadm	0.20	0.06
pmarkaide001	ggmer	0.12	0.00
poaugbia	pojoo	0.03	0.00
kiateanm	qocpn	0.03	0.02
qfbloala	qfjfg	0.02	0.00
qfacaarm	qfila	0.01	0.00
qoparaya	qofcm	0.00	0.00
ggpzamai	ggmer	0.00	0.00

---

Table 2: Calculated time and waiting time in days of the groups.

GROUP	Calculated Days	Waiting Time
polymat	36393.43	0.04
poahh	9618.74	0.14
egune	6298.05	0.08
poemg	5497.50	0.01
pomps	3244.93	0.12
pojoo	2555.73	0.02
potmb	2445.77	0.02
qfila	1078.51	0.00
poxlp	852.80	0.00
qocpn	762.95	0.00
qjfg	616.25	0.26
potss	511.91	0.00
wakgg	139.52	0.00
qambm	123.21	0.00
faraz	115.05	0.01
qofcm	113.35	0.00
mtgfa	59.45	0.00
wdaga	26.52	0.00
jiads	26.08	0.08
arinadm	6.92	0.02
qofpg	2.86	0.00
bgjal	0.94	0.00
wuebp	0.20	0.00
ggmer	0.12	0.00

## Arina Data Storage Top Users

In the following graph we plot the users having more data in Arina in the last month. If you appear in this graph, we strongly encourage you to reduce your data in Arina.

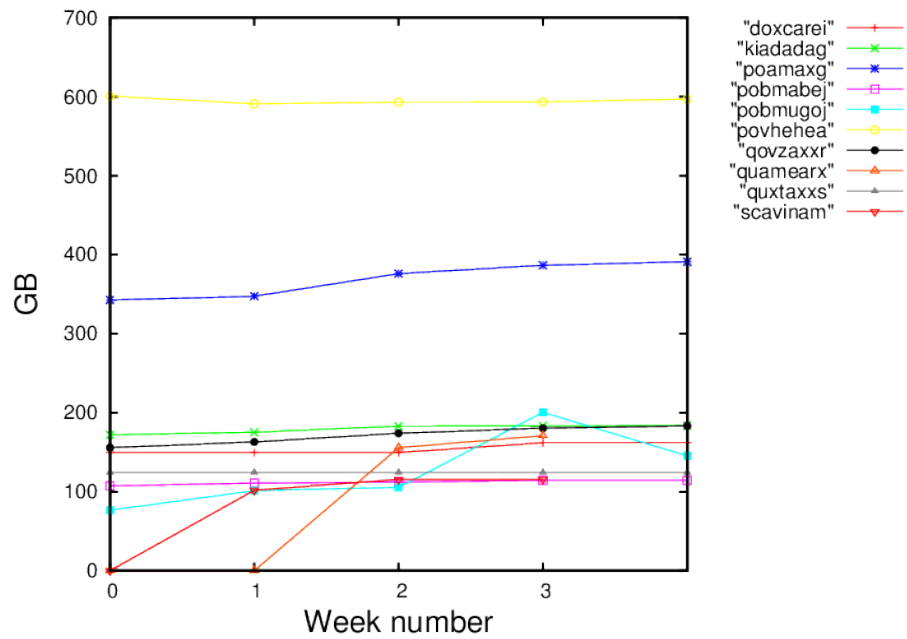


Figure 2: Storage evolution in the last month in GB.