

Estatistics for December/2015

January 11, 2016

Arina

In this brief document we show the usage of arina during December. This month 50817 computing days where used and the the average use of the cluster was 88 %. Since the first of December 50340 computing days where used and the the average use of the Arina cluster was 79 %. The figure shows the usage of Arina along the month. In the first table the usage of each user is shown. The third column indicates all the time each user has used for calculation during this month. The fourth column shows the average time that each job was waiting before the it started running, in days units. In the second table, the same data as in table 1 collected by group is shown.

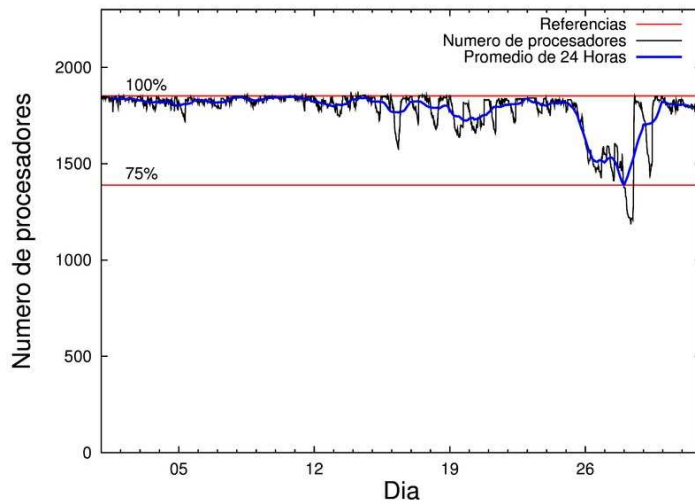


Figure 1: Cluster use. The blue line is a 24 hours average.

Table 1: Calculated time and waiting time in days of the users.

USER	GROUP	Calculated Days	Waiting Time
qfbgoroj	qfjfg	7247.34	1.59
povhehea	poahh	6599.63	3.06
fabusgui	qfjfg	5501.35	11.43
bckmimoj	qfjfg	5222.67	0.94
poamaxg	polymat	4082.89	2.51
poalocad	polymat	4010.60	3.72
povrucif	polymat	2408.94	0.84
csazusej	nanogune	2135.97	1.03
qovzaxxr	polymat	1858.07	0.95
kivpepor	kirpp	1377.38	0.46
pobmugoj	pomps	1088.57	0.10
quaurhei	qfjfg	1074.64	0.33
povpisim	pomps	888.11	14.04
juranga004	potmb	804.04	0.50
favcopee	qfjfg	709.60	7.26
pobrease	potmb	674.16	1.25
pobgrgs	pomps	658.45	0.11
qopgobee	qocpn	457.82	0.05
qobsalae	qambm	455.81	0.02
kibderua	qofcm	450.41	0.03
navdesad	nanopeji	394.12	0.81
pobfoese	poxlp	355.14	0.22
wavalocm	waijo	332.52	0.10
kiadadag	pojju	324.14	0.49
poblairo	poxlp	293.33	0.32
popugurj	pojju	230.94	0.09
quamearx	qfila	166.68	0.25
favecvep	qfjfg	137.04	1.14
pobcacad	pojju	123.72	0.11
qoprualg	qofpg	109.57	0.04
poarloi	pojju	85.06	0.42
qoaarecl	qofcm	83.65	0.00
anpgaetk	anjbc	81.10	0.09
pobmabej	potmb	79.70	0.18
sckwankm	waars	53.75	1.32
ggplaarj	ggmer	34.05	0.46
qoparaya	qofcm	30.83	0.05
faacalea	qfjfg	27.28	0.52
qopalpec	qofpg	27.03	0.02
qopcomof	qofcm	26.53	0.05
povmieci	pojju	26.45	0.11
quxlegoa	qfjfg	21.08	0.36
qfpbaprj	qfila	14.08	0.06
poagumaj	pojju	13.04	0.26
wepgaara	weaga	12.05	0.12
webogare	arinadm	11.83	0.23
bcpitaia	bcizb	4.94	0.00

wubcavaa	wuash	2.75	0.03
poakaxxb	polymat	2.74	0.02
qfpmamoh	qfila	1.87	0.00
ggpagrom	ggmer	1.23	0.18
qfbloala	qfjfg	1.02	0.13
pobmelat	arinadm	0.64	0.00
qapceruj	qambm	0.46	0.19
qfbleoni	qfjfg	0.38	0.02
poplopex	pojju	0.21	0.01
quapuoli	qocpn	0.08	0.02
upetralanda001	wdaga	0.00	0.02
pobromam	pomps	0.00	0.00
poagiaie	pojju	0.00	0.62
kiarorom	poxlp	0.00	0.13

Table 2: Calculated time and waiting time in days of the groups.

GROUP	Calculated Days	Waiting Time
qfjfg	19942.41	1.88
polymat	12363.24	2.81
poahh	6599.63	3.06
pomps	2635.12	0.41
nanogune	2135.97	1.03
potmb	1557.89	0.49
kirpp	1377.38	0.46
pojju	803.56	0.37
poxlp	648.48	0.25
qofcm	591.43	0.04
qocpn	457.90	0.05
qambm	456.27	0.03
nanopeji	394.12	0.81
waijo	332.52	0.10
qfila	182.64	0.25
qofpg	136.60	0.03
anjbc	81.10	0.09
waars	53.75	1.32
ggmer	35.28	0.43
arinadm	12.47	0.20
weaga	12.05	0.12
bcizb	4.94	0.00
wuash	2.75	0.03
wdaga	0.00	0.02

Arina Data Storage Top Users

In the following graph we plot the users having more data in Arina in the last month. If you appear in this graph, we strongly encourage you to reduce your data in Arina.

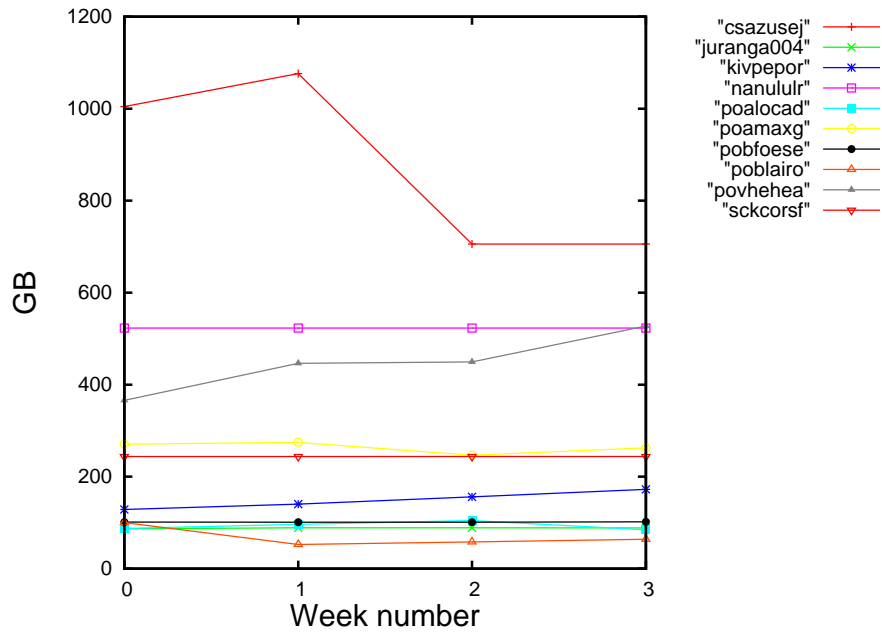


Figure 2: Storage evolution in the last month in GB.

Péndulo

This month computing days where used in **Péndulo** and the the average use of the cluster was %. Since the first of December computing days where used and the the average use of the cluster was %. The figure shows the usage of Péndulo along the month. In the first table the usage of each user is shown. The third column indicates all the time each user has used for calculation during this month. The fourth column shows the average time that each job was waiting before the it started running, in days units. In the second table, the same data as in table 1 collected by group is shown.

Figure 3: Cluster use. The blue line is a 24 hours average.

Table 3: Calculated time and waiting time in days of the users.

USER	GROUP	Calculated Days	Waiting Time
------	-------	-----------------	--------------

Table 4: Calculated time and waiting time in days of the groups.

GROUP	Calculated Days	Waiting Time
-------	-----------------	--------------