

Estadistics for December/2014

March 2, 2015

Arina

In this brief document we show the usage of arina during December. This month 50907 computing days were used and the the average use of the cluster was 86 %. Since the first of December 49437 computing days were used and the the average use of the Arina cluster was 83 %. The figure shows the usage of Arina along the month. In the first table the usage of each user is shown. The third column indicates all the time each user has used for calculation during this month. The fourth column shows the average time that each job was waiting before the it started running, in days units. In the second table, the same data as in table 1 collected by group is shown.

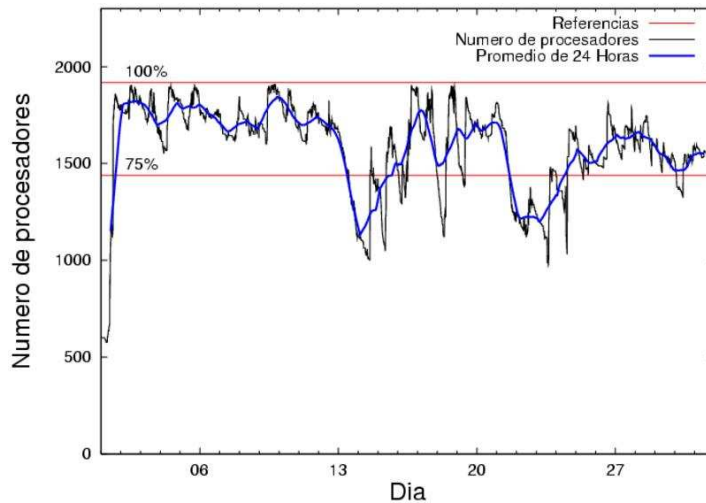


Figure 1: Cluster use. The blue line is a 24 hours average.

Table 1: Calculated time and waiting time in days of the users.

USER	GROUP	Calculated Days	Waiting Time
povhehea	poahh	17411.17	1.10
sckcorsf	nanogune	15742.67	0.69
poblairo	poxlp	6133.93	0.03
pobinini	poxlp	1531.76	0.02
pobmugoj	pomps	1509.73	0.04
pobrease	potmb	1163.98	0.04
povrucif	polymat	1075.41	0.00
juranga004	potmb	975.90	0.01
qovzaxxr	polymat	885.55	0.00
poplopex	pojju	583.42	0.00
pobgrgs	pomps	520.15	0.01
kibderua	qofcm	438.15	0.00
pobfoese	poxlp	415.04	0.07
qopgobee	qocpn	347.15	0.00
fabusgui	qfjfg	298.71	0.00
bcpmeale	qfjfg	240.02	0.00
kixbebej	poxlp	227.93	0.01
nanululr	nanogune	196.57	0.00
qfbgoroj	qfjfg	190.68	0.02
poalocad	polymat	189.15	0.02
bckmimoj	qfjfg	182.94	0.02
ciaazapj	poxlp	179.93	0.00
qovzaxxr	qorzz	156.75	0.00
upetralanda001	wdaga	43.07	0.07
acplaing	jiads	40.13	0.13
sckwankm	waars	38.93	0.00
bcpfmaa	mimam	31.64	0.00
poamaxg	polymat	30.87	0.01
qfbleoni	qfjfg	28.33	0.00
pobmelat	arinadm	25.81	0.00
naaalcaa	nanopeji	23.02	0.13
meamejaj	mejssl	14.41	0.00
wubcavaa	wuash	11.88	0.01
pobmabej	potmb	7.62	0.00
kiasomal	qocpn	6.41	0.00
bavfepem	pojju	3.56	0.04
qfjbaprj	qfila	3.07	0.00
qfxaldad	qfllp	2.03	0.07

Table 2: Calculated time and waiting time in days of the groups.

GROUP	Calculated Days	Waiting Time
poahh	17411.17	1.10
nanogune	15939.24	0.69
poxlp	8488.59	0.03
polymat	2180.98	0.02
potmb	2147.51	0.02
pomps	2029.88	0.03
qjfg	940.69	0.01
pojju	586.98	0.00
qofcm	438.15	0.00
qocpn	353.56	0.00
qorzz	156.75	0.00
wdaga	43.07	0.07
jiads	40.13	0.13
waars	38.93	0.00
mimam	31.64	0.00
arinadm	25.81	0.00
nanopeji	23.02	0.13
mejsl	14.41	0.00
wuash	11.88	0.01
qfila	3.07	0.00
qflp	2.03	0.07

Arina Data Storage Top Users

In the following graph we plot the users having more data in Arina in the last month. If you appear in this graph, we strongly encourage you to reduce your data in Arina.

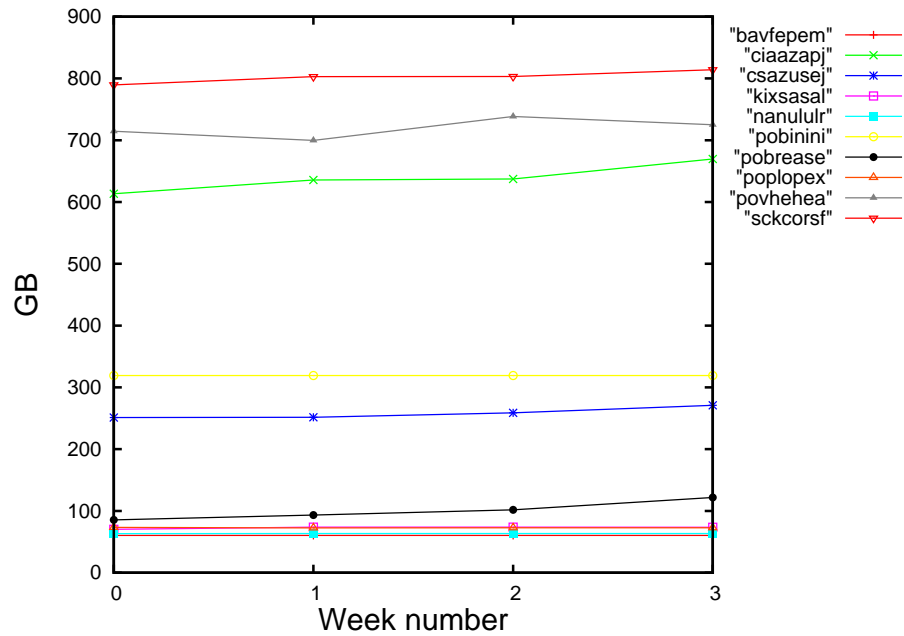


Figure 2: Storage evolution in the last month in GB.

Péndulo

This month 5872 computing days were used in **Péndulo** and the the average use of the cluster was 18 %. Since the first of December computing days were used and the the average use of the cluster was %. The figure shows the usage of Péndulo along the month. In the first table the usage of each user is shown. The third column indicates all the time each user has used for calculation during this month. The fourth column shows the average time that each job was waiting before the it started running, in days units. In the second table, the same data as in table 1 collected by group is shown.

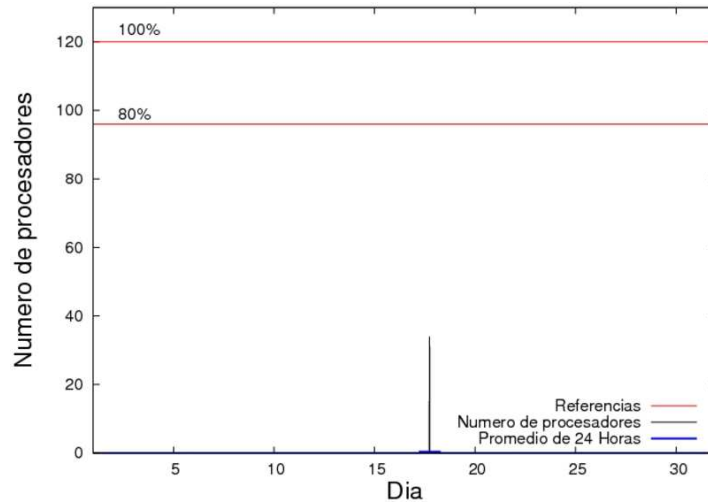


Figure 3: Cluster use. The blue line is a 24 hours average.

Table 3: Calculated time and waiting time in days of the users.

USER	GROUP	Calculated Days	Waiting Time
jtppragg	jtjob	0.03	0.00

Table 4: Calculated time and waiting time in days of the groups.

GROUP	Calculated Days	Waiting Time
-------	-----------------	--------------