

Estadistics for December/2014

February 1, 2014

Arina

In this brief document we show the usage of arina during December. This month 41404 computing days were used and the the average use of the cluster was 101 %. Since the first of December 40555 computing days were used and the the average use of the Arina cluster was 101 %. The figure shows the usage of Arina along the month. In the first table the usage of each user is shown. The third column indicates all the time each user has used for calculation during this month. The fourth column shows the average time that each job was waiting before the it started running, in days units. In the second table, the same data as in table 1 collected by group is shown.

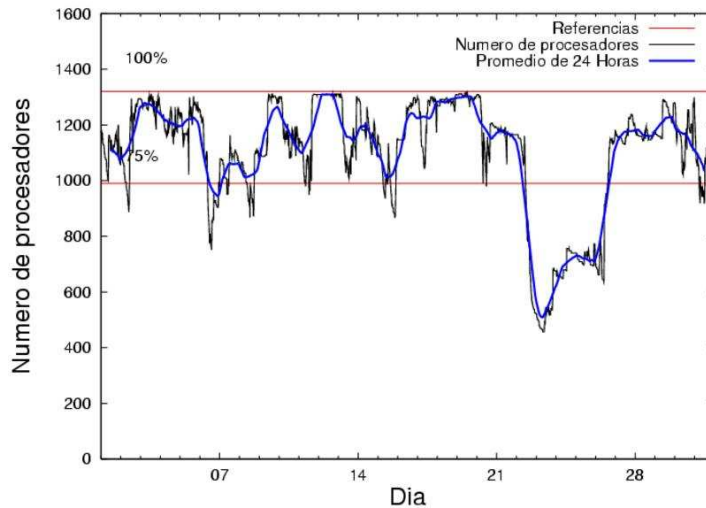


Figure 1: Cluster use. The blue line is a 24 hours average.

Table 1: Calculated time and waiting time in days of the users.

USER	GROUP	Calculated Days	Waiting Time
scpzuola	qorzz	12335.03	0.90
naamamap	nanogune	10051.18	0.51
povhehea	poahh	4882.38	0.36
popugurj	pojuu	2229.84	0.18
csazusej	nanogune	1972.79	0.31
pobrease	potss	1292.40	1.46
povrucif	polymat	1278.62	0.20
fabusgui	qfjfg	1139.96	0.31
bckmimoj	qfjfg	1052.69	0.11
ciaazapj	poxlp	1004.40	0.14
pobmugoj	pojuu	717.94	0.60
qopgobee	qocpn	504.58	0.03
pobgrgrs	pojuu	407.03	0.21
quxbabai	qfjfg	319.73	0.17
kibderua	qofcm	315.12	0.07
qobconde	qofcm	255.52	0.09
sckcorsf	nanogune	241.34	0.21
poplopex	pojuu	181.91	0.06
cixesesb	poxlp	173.24	0.64
juranga004	potmb	152.77	0.02
sckwankm	waars	135.41	0.10
mapalmau	qtftp	107.43	0.36
quaduree	qfila	96.03	0.17
ekpvebaa	ekjgm	82.96	0.31
pobmabej	pojuu	54.15	0.02
gaazareg	injss	53.92	0.15
inpleibf	inffi	40.12	0.03
wubcavaa	wuash	37.24	0.32
qopcomof	qofcm	35.33	0.00
waxpoxxy	waars	33.52	0.30
quxlegoa	qfjfg	31.64	0.15
povwawaj	pojuu	29.21	0.08
sgkluqun	pojuu	28.90	0.00
favecvcp	qfjfg	26.51	0.16
bixcobum	gbdga	25.62	0.44
bavfepem	pojuu	24.10	0.10
qoaarecl	qofcm	15.94	0.17
qoprualg	qofpg	15.52	0.00
qobfifib	qocpn	5.10	0.04
qfjbaprij	qfila	5.00	0.01
qfpesmai	qfila	4.27	0.01
favcopee	qfjfg	4.02	0.07
naaalcaa	nanopeji	2.82	0.01
kixsasal	pojuu	0.61	0.00
webogare	arinadm	0.45	0.00
wabpepaa	waars	0.07	0.01
qfxaldad	qflfp	0.04	0.00

pmarkaide001	ggmer	0.02	0.00
pobmelat	arinadm	0.01	0.00
baxrarat	baeaa	0.01	0.24

Table 2: Calculated time and waiting time in days of the groups.

GROUP	Calculated Days	Waiting Time
qorzz	12335.03	0.90
nanogune	12265.31	0.51
poahh	4882.38	0.36
pojuu	3673.69	0.34
qfjfg	2574.55	0.20
potss	1292.40	1.46
polymat	1278.62	0.20
poxlp	1177.64	0.16
qofcm	621.92	0.08
qocpn	509.68	0.03
waars	169.00	0.11
potmb	152.77	0.02
qtftp	107.43	0.36
qfila	105.31	0.03
ekjgm	82.96	0.31
injss	53.92	0.15
infli	40.12	0.03
wuash	37.24	0.32
gbdga	25.62	0.44
qofpg	15.52	0.00
nanopeji	2.82	0.01
arinadm	0.46	0.00
qflp	0.04	0.00
ggmer	0.02	0.00
baeaa	0.01	0.24

Arina Data Storage Top Users

In the following graph we plot the users having more data in Arina in the last month. If you appear in this graph, we strongly encourage you to reduce your data in Arina.

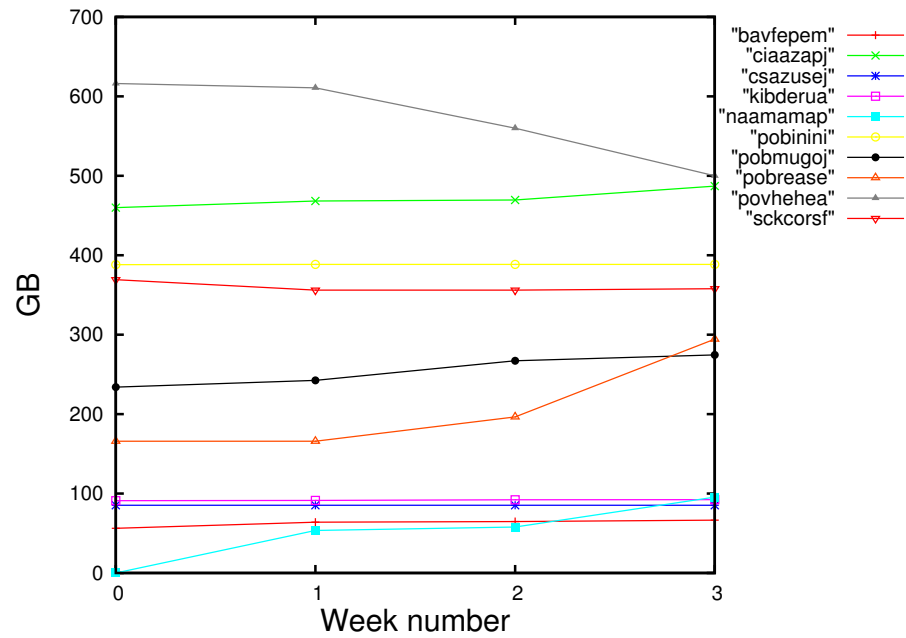


Figure 2: Storage evolution in the last month in GB.

Péndulo

This month 593 computing days were used in **Péndulo** and the the average use of the cluster was 27 %. Since the first of December 2189 computing days were used and the the average use of the cluster was 7 %. The figure shows the usage of Péndulo along the month. In the first table the usage of each user is shown. The third column indicates all the time each user has used for calculation during this month. The fourth column shows the average time that each job was waiting before the it started running, in days units. In the second table, the same data as in table 1 collected by group is shown.

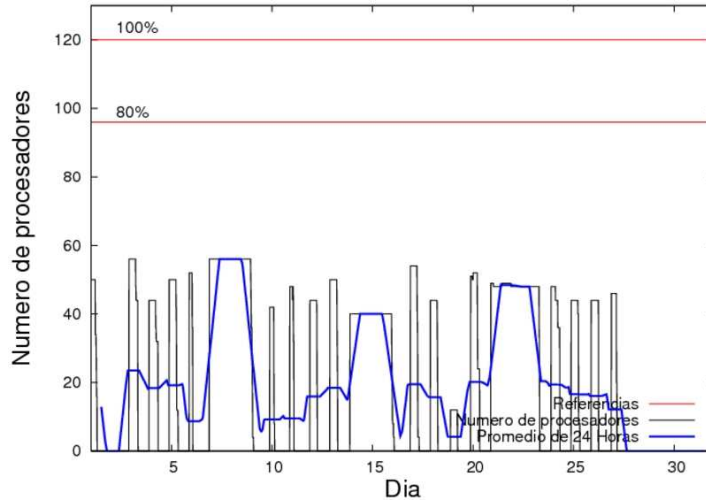


Figure 3: Cluster use. The blue line is a 24 hours average.

Table 3: Calculated time and waiting time in days of the users.

USER	GROUP	Calculated Days	Waiting Time
qovzaxxr	qorzz	592.14	2.53
mtpmafel	mtgfa	0.67	0.03
qfxaldad	qflp	0.00	0.00

Table 4: Calculated time and waiting time in days of the groups.

GROUP	Calculated Days	Waiting Time
qorzz	592.14	2.53
mtgfa	0.67	0.03
qflp	0.00	0.00