

# Estadistics for December/2012

February 1, 2013

## Arina

In this brief document we show the usage of arina during December. This month 34215 computing days were used and the the average use of the cluster was 79 %. Since the first of December 34244 computing days were used and the the average use of the Arina cluster was 79 %. The figure shows the usage of Arina along the month. In the first table the usage of each user is shown. The third column indicates all the time each user has used for calculation during this month. The fourth column shows the average time that each job was waiting before the it started running, in days units. In the second table, the same data as in table 1 collected by group is shown.

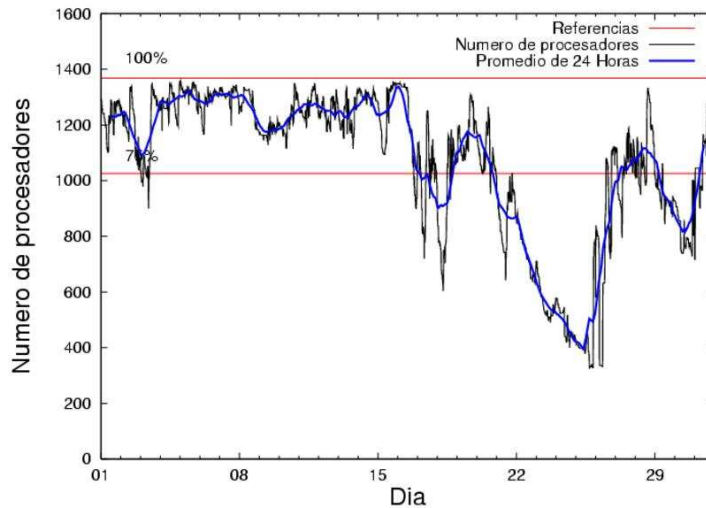


Figure 1: Cluster use. The blue line is a 24 hours average.

Table 1: Calculated time and waiting time in days of the users.

USER	GROUP	Calculated Days	Waiting Time
csazusej	nanogune	9137.41	0.41
povhehea	poahh	4090.75	0.52
scpzuola	qorzz	3083.63	5.00
povwawaj	pojuu	2710.53	1.32
qoaarecl	qofcm	2008.07	0.57
favcopee	qfjfg	1338.73	1.28
pobrease	potss	1308.15	0.17
wmbgavem	waets	1147.46	0.22
juranga004	potmb	1023.26	0.01
kibmeheg	pojuu	906.13	0.13
ciaazapj	poxlp	765.67	0.08
sckcorsf	nanogune	705.31	0.17
qoparaya	qofcm	685.90	0.15
kibpapaa	qorzz	559.93	2.38
pobmugoj	pojuu	536.16	0.09
bcpmeale	qffbe	517.77	0.93
quxbabai	qfjfg	432.63	0.02
pobgrgrs	pojuu	419.08	0.02
popugurj	pojuu	369.53	0.06
bckmimoj	qfjfg	348.67	0.02
qopgobee	qocpn	337.30	0.09
povrucif	poxlp	325.85	0.02
pobinini	pojuu	303.25	0.02
bcpremae	bcdbu	297.19	0.25
iapgarue	iaegr	260.44	0.24
pobrease	pojuu	153.74	0.30
bcklogoi	infi	135.24	1.24
qfploarf	qfila	110.53	0.12
webogare	arinadm	55.13	0.00
cixesesb	poxlp	33.43	0.01
poalolog	poxlp	29.36	0.31
qoprualg	qofpg	23.71	0.01
mapalmau	qtftp	22.47	0.00
poplopex	pojuu	18.94	0.01
kixsasal	pojuu	15.00	0.06
nabzezem	nanogune	10.06	0.00
kibderua	qofcm	6.87	0.25
qopcomof	qofcm	4.10	0.01
pmarkaide001	ggmer	1.99	0.04
wabpepaa	waars	1.68	0.19
qfpgapae	qfegp	1.37	0.01
pobmelat	arinadm	0.58	0.00
favecvcp	qfjfg	0.51	0.00
qfpesmai	qfila	0.30	0.00
qfjbaprij	qfila	0.30	0.01
wuppobam	wuebp	0.05	0.00
pobmabej	pojuu	0.02	0.00

bpcacaa	mimam	0.00	0.00
---------	-------	------	------

Table 2: Calculated time and waiting time in days of the groups.

GROUP	Calculated Days	Waiting Time
nanogune	9852.79	0.27
pojuu	5432.37	0.13
poahh	4090.75	0.52
qorzz	3643.56	3.41
qofcm	2704.95	0.49
qfjfg	2120.53	0.23
potss	1308.15	0.17
poxlp	1154.30	0.05
waets	1147.46	0.22
potmb	1023.26	0.01
qffbe	517.77	0.93
qocpn	337.30	0.09
bedbu	297.19	0.25
iaegr	260.44	0.24
infl	135.24	1.24
qfila	111.13	0.10
arinadm	55.71	0.00
qofpg	23.71	0.01
qtftp	22.47	0.00
ggmer	1.99	0.04
waars	1.68	0.19
qfegp	1.37	0.01
wuebp	0.05	0.00
mimam	0.00	0.00

## Pendolo

This month 732 computing days were used in **Pendolo** and the the average use of the cluster was 33 %. Since the first of December 732 computing days were used and the the average use of the cluster was 33 %. The figure shows the usage of Pendolo along the month. In the first table the usage of each user is shown. The third column indicates all the time each user has used for calculation during this month. The fourth column shows the average time that each job was waiting before the it started running, in days units. In the second table, the same data as in table 1 collected by group is shown.

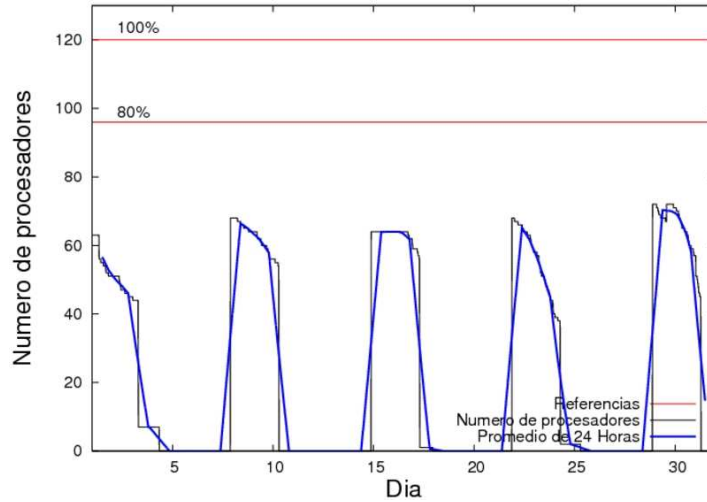


Figure 2: Cluster use. The blue line is a 24 hours average.

Table 3: Calculated time and waiting time in days of the users.

USER	GROUP	Calculated Days	Waiting Time
jtpanlod	jtjob	731.96	12.37
qfpgapae	qfegp	0.04	0.19

Table 4: Calculated time and waiting time in days of the groups.

GROUP	Calculated Days	Waiting Time
jtjob	731.96	12.37
qfegp	0.04	0.19

## Ikerbasque machine

The service has access to 208 xeon cores in this machine, which are older than Arina's ones. The codes of only few big users are maintained there to optimize the maintenance time. This month 5418 computing days were used in **Ikerbasque** machine and the the average use of the cluster was 84 %. Since the first of December 5418 computing days were used and the the average use of the cluster was 84 %. In the first table the usage of each user is shown. The third column indicates all the time each user has used for calculation during this month. The fourth column shows the average time that each job was waiting before the it started running, in days units. In the second table, the same data as in table 1 collected by group is shown.

Table 5: Calculated time and waiting time in days of the users.

USER	GROUP	Calculated Days	Waiting Time
scpzuola	qorzz	3813.85	0.00
kibpapaa	qorzz	625.56	0.00
pobmugoj	pojuu	978.81	0.00

Table 6: Calculated time and waiting time in days of the groups.

GROUP	Calculated Days	Waiting Time
qorzz	4439.44	0.00
pojuu	978.81	0.00