

Estadistics for December/2011

February 1, 2012

Arina

In this brief document we show the usage of arina during December. This month 25315 computing days where used and the the average use of the cluster was 58 %. Since the first of December 22920 computing days where used and the the average use of the cluster was 53 %. The figure shows the usage of Arina along the month. In the first table the usage of each user is shown. The third column indicates all the time each user has used for calculation during this month. The fourth column shows the average time that each job was waiting before the it started running, in days units. In the second table, the same data as in table 1 collected by group is shown.

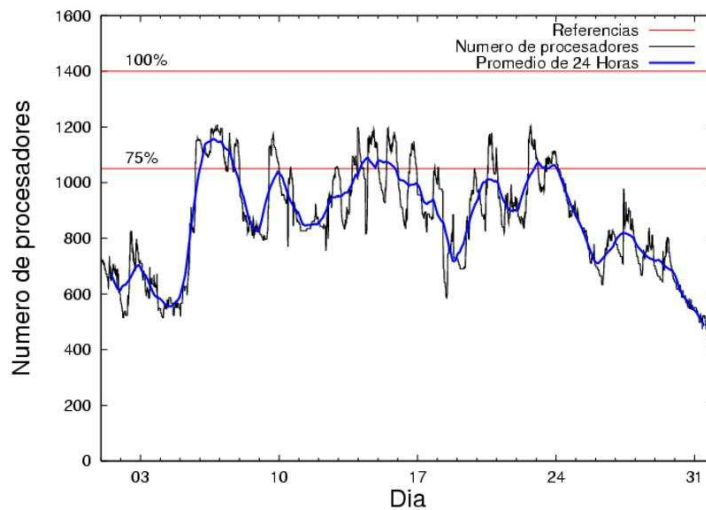


Figure 1: Cluster use. The blue line is a 24 hours average.

Table 1: Calculated time and waiting time in days of the users.

USER	GROUP	Calculated Days	Waiting Time
favcopee	qfjfg	7558.56	0.22
povhehea	poahh	2654.70	0.00
kibpapaa	qorzz	1632.00	0.00
wmbgavem	waets	1617.95	0.01
qoaarecl	qofcm	1299.51	0.00
pobmugoj	pojoo	1261.11	0.00
quxlegoa	qfjfg	1053.03	0.49
pobmelat	arinadm	1035.39	0.09
povwawaj	pojoo	1013.13	0.01
qopgobee	qocpn	767.03	0.00
etpdihei	etjfm	715.98	0.01
pmarkaide001	ggmer	581.79	0.06
qovzaxxr	qorzz	540.87	0.14
kibderua	qofcm	381.19	0.00
cixesesb	poxlp	351.04	0.00
ciaazapj	poxlp	292.15	0.00
poplopex	pojoo	277.61	0.18
povrucif	poxlp	267.97	0.04
pobinini	pojoo	261.57	0.02
popugurj	pojoo	196.50	0.00
wabpepaa	waars	164.48	0.28
kibmeheg	pojoo	162.28	0.00
wabeslel	waars	140.08	0.00
pobrease	pojoo	128.98	0.00
qoparaya	qofcm	121.48	0.00
pobrease	potss	100.62	0.74
waptctce	waets	96.74	0.00
favecvcp	qfjfg	94.81	0.00
pobgrgrs	pojoo	84.43	0.00
bcpitaia	bcizb	61.53	0.00
bcpfmaa	mimam	56.51	0.00
qfjbapj	qfila	53.71	0.00
webogare	arinadm	51.22	0.00
qoprualg	qofpg	43.23	0.00
webzucaa	wenzu	40.14	0.36
wmpetali	wdaga	29.57	0.06
kivremey	qpjag	28.51	0.01
mapalmau	magps	27.28	0.02
qopcomof	qofcm	17.77	0.00
bcpremae	bcdbu	14.43	0.00
poblairo	poxlp	8.80	0.01
iapgarue	iaegr	5.35	0.00
bpcacaa	mimam	5.11	0.00
mapmemam	qtftp	4.67	0.00
qfbleoni	qfjfg	4.63	0.00
acblonou	ccjla	4.13	0.70
quxbabai	qfjfg	3.33	0.00

qfbloala	qfala	1.14	0.00
bckmimoj	qfjfg	0.60	0.00
waxpoxxy	waars	0.22	0.00
pobmabej	pojju	0.10	0.00
ggpmoasi	ggmer	0.10	0.00
jtpanlod	jtjob	0.07	0.29
wuppobam	wuebp	0.01	0.00

Table 2: Calculated time and waiting time in days of the groups.

GROUP	Calculated Days	Waiting Time
qfjfg	8714.96	0.22
pojju	3385.71	0.14
poahh	2654.70	0.00
qorz	2172.87	0.04
qofcm	1819.95	0.00
waets	1714.70	0.01
arinadm	1086.61	0.08
poxlp	919.96	0.03
qocpn	767.03	0.00
etjfm	715.98	0.01
ggmer	581.89	0.06
waars	304.79	0.14
potss	100.62	0.74
mimam	61.62	0.00
bcizb	61.53	0.00
qfila	53.71	0.00
qofpg	43.23	0.00
wenzu	40.14	0.36
wdaga	29.57	0.06
qpjag	28.51	0.01
magps	27.28	0.02
bcdbu	14.43	0.00
iaegr	5.35	0.00
qtftp	4.67	0.00
ccjla	4.13	0.70
qfala	1.14	0.00
jtjob	0.07	0.29
wuebp	0.01	0.00

Pendolo

This month 0 computing days were used in **Pendolo** and the the average use of the cluster was 0 %. Since the first of December computing days were used and the the average use of the cluster was %. The figure shows the usage of Pendolo along the month. In the first table the usage of each user is shown. The third column indicates all the time each user has used for calculation during this month. The fourth column shows the average time that each job was waiting before the it started running, in days units. In the second table, the same data as in table 1 collected by group is shown.

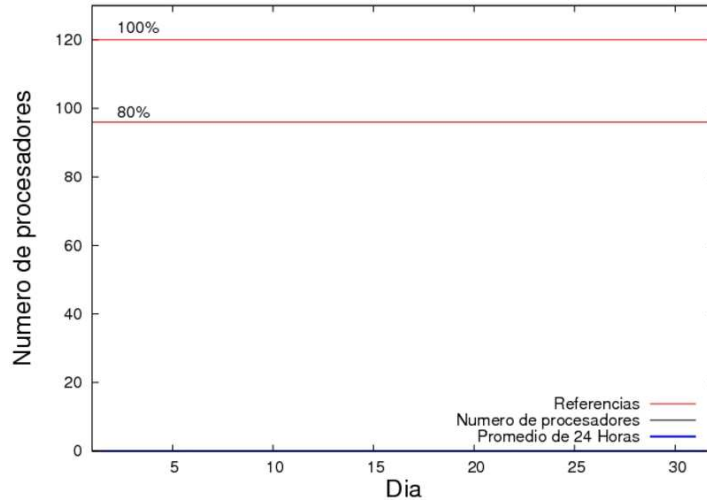


Figure 2: Cluster use. The blue line is a 24 hours average.

Table 3: Calculated time and waiting time in days of the users.

USER	GROUP	Calculated Days	Waiting Time
------	-------	-----------------	--------------

Table 4: Calculated time and waiting time in days of the groups.

GROUP	Calculated Days	Waiting Time
-------	-----------------	--------------

Ikerbasque machine

The service has access to 208 xeon cores in this machine, which are older than Arina's ones. The codes of only few big users are maintained there to optimize the maintenance time. This month 4895 computing days were used in **Ikerbasque** machine and the the average use of the cluster was 75 %. Since the first of December 4896 computing days were used and the the average use of the cluster was 75 %. In the first table the usage of each user is shown. The third column indicates all the time each user has used for calculation during this month. The fourth column shows the average time that each job was waiting before the it started running, in days units. In the second table, the same data as in table 1 collected by group is shown.

Table 5: Calculated time and waiting time in days of the users.

USER	GROUP	Calculated Days	Waiting Time
povhehea	poahh	2223.89	0.00
kibpapaa	qorzz	1636.81	0.73
pobmugoj	pojuu	1035.30	0.91

Table 6: Calculated time and waiting time in days of the groups.

GROUP	Calculated Days	Waiting Time
poahh	2223.89	0.00
qorzz	1636.81	0.73
pojuu	1035.30	0.91