

Estadistics for November/2018

December 1, 2018

Arina

In this brief document we show the usage of arina during November. This month 144364 computing days were used and the the average use of the cluster was 129 %. Since the first of December 1119409 computing days were used and the the average use of the Arina cluster was 82 %. The figure shows the usage of Arina along the month. In the first table the usage of each user is shown. The third column indicates all the time each user has used for calculation during this month. The fourth column shows the average time that each job was waiting before the it started running, in days units. In the second table, the same data as in table 1 collected by group is shown.

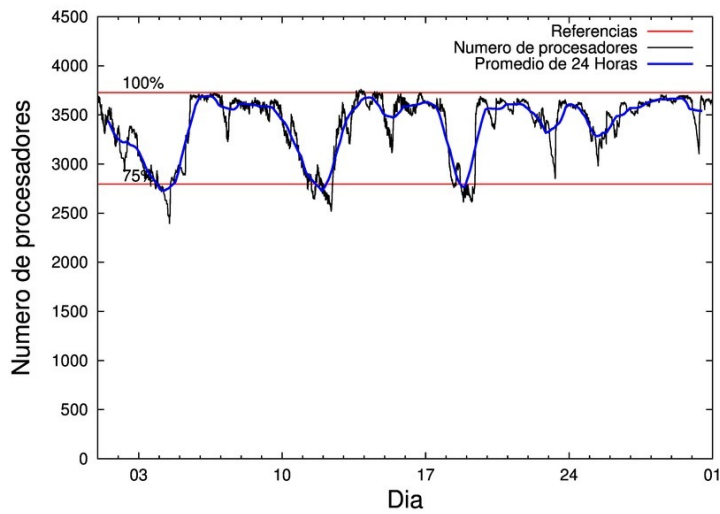


Figure 1: Cluster use. The blue line is a 24 hours average.

Table 1: Calculated time and waiting time in days of the users.

USER	GROUP	Calculated Days	Waiting Time
povhehea	poahh	53434.00	2.80
qovzaxxr	polymat	13098.62	0.53
povwawaj	pojoo	12591.16	0.68
pobmabej	potmb	7278.40	0.17
povrucif	polymat	7041.14	0.10
enxcacaj	egune	5711.41	0.97
poaganau	polymat	4971.11	0.26
poairurm	polymat	4205.15	0.41
poaugbia	pojoo	2870.46	0.17
pobfoese	poxlp	2143.17	0.08
poblairo	poxlp	1967.29	0.28
poajejec	polymat	1801.37	0.14
pobmugoj	pomps	1739.28	0.06
quxtaxxs	polymat	1727.70	0.35
povpisim	pomps	1640.29	0.08
scpridei	qofcm	1590.95	0.03
pobrease	potmb	1537.51	0.15
csazusej	nanogune	1447.14	0.06
poagafrm	pojoo	1443.19	0.79
fabusgui	qfjfg	1409.58	0.27
popugurj	pojoo	1294.34	0.04
pobluluv	poxlp	1141.47	0.27
sckahnom	potmb	861.14	0.43
poarugua	pojoo	845.09	0.15
enxararo	egune	683.24	0.05
kiaolfeb	potss	614.38	0.11
quainbea	qfjfg	599.28	0.07
qfpmamoh	qfila	584.28	0.13
pobgrgrs	pomps	570.69	0.01
popporiv	poxlp	522.24	0.18
ciaansap	pojoo	512.01	0.05
kixgrazr	potmb	480.02	0.12
pmarkaide001	ggmer	468.67	0.43
naplodud	nanogune	460.64	0.01
bckmimoj	qfjfg	446.32	0.11
kiasomal	qocpn	443.61	0.06
quamearx	qfila	409.59	0.00
kibderua	qofcm	403.19	0.02
qobzazag	qocpn	378.52	0.03
poanacuj	polymat	335.43	0.02
poplopex	pojoo	333.21	0.00
pobladej	poxlp	331.54	0.06
wmpetali	wdaga	288.99	0.06
qobpamap	qocpn	260.57	0.02
qfbleoni	qfjfg	255.51	0.03
napkikia	nanogune	247.23	0.03
qopgobee	qocpn	238.23	0.02

quxlegoa	qfjfg	179.15	0.13
doxcarei	poemg	134.53	0.68
kiadadag	pojuu	83.65	0.06
ciazuulm	pojuu	80.06	0.14
qfpesmai	qfila	46.48	0.01
ciaolarb	pojuu	45.32	0.00
enblairo	egune	38.14	0.24
poaorloi	pojuu	32.76	0.04
scavinam	poemg	19.15	0.01
inpdibeg	inagr	13.37	0.04
qubcaxxc	qfjfg	7.39	0.35
poatealx	pojuu	5.73	0.00
qfbloala	qfjfg	5.49	0.00
favcopee	qfjfg	4.92	0.04
quaduree	qfila	4.42	0.00
bgpmuhoi	bcnsc	2.85	0.02
qfbolsaa	qfila	2.66	0.00
pobsisis	pomps	2.18	0.00
qobsalae	qambm	1.86	0.01
qoapefuh	qocpn	1.68	0.00
qfjbaprij	qfila	1.09	0.00
ciaalece	pojuu	0.88	0.00
webogare	arinadm	0.38	0.01
favecvep	qfjfg	0.14	0.09
pobmelat	arinadm	0.08	0.01
pobtxe01	poxlp	0.03	0.02
improagj	imfmg	0.02	0.00
qoparaya	qofcm	0.01	0.00
povracoe	pomps	0.00	0.00
kibderua	qoabl	0.00	0.00

Table 2: Calculated time and waiting time in days of the groups.

GROUP	Calculated Days	Waiting Time
poahh	53434.00	2.80
polymat	33180.53	0.19
pojoo	20137.87	0.36
potmb	10157.07	0.20
egune	6432.78	0.73
poxlp	6105.73	0.17
pomps	3952.44	0.02
qfjfg	2907.77	0.17
nanogune	2155.01	0.02
qofcm	1994.15	0.02
qocpn	1322.60	0.04
qfila	1048.52	0.00
potss	614.38	0.11
ggmer	468.67	0.43
wdaga	288.99	0.06
poemg	153.68	0.03
inagr	13.37	0.04
bcnsc	2.85	0.02
qambm	1.86	0.01
arinadm	0.46	0.01
imfng	0.02	0.00
qoabl	0.00	0.00

Arina Data Storage Top Users

In the following graph we plot the users having more data in Arina in the last month. If you appear in this graph, we strongly encourage you to reduce your data in Arina.

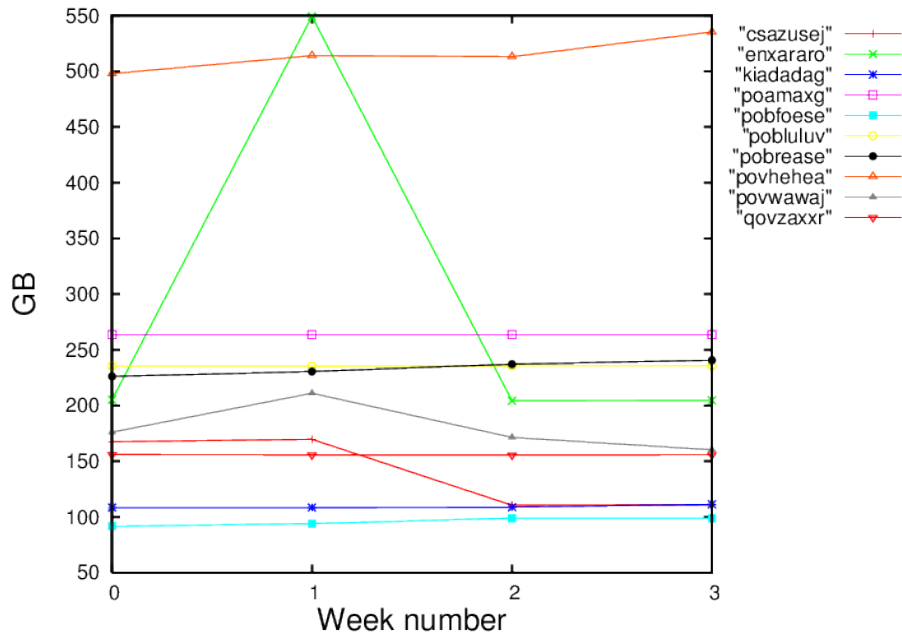


Figure 2: Storage evolution in the last month in GB.