

# Estadistics for November/2017

December 1, 2017

## Arina

In this brief document we show the usage of arina during November. This month 82036 computing days were used and the average use of the cluster was 73 %. Since the first of December 724006 computing days were used and the average use of the Arina cluster was 72 %. The figure shows the usage of Arina along the month. In the first table the usage of each user is shown. The third column indicates all the time each user has used for calculation during this month. The fourth column shows the average time that each job was waiting before the it started running, in days units. In the second table, the same data as in table 1 collected by group is shown.

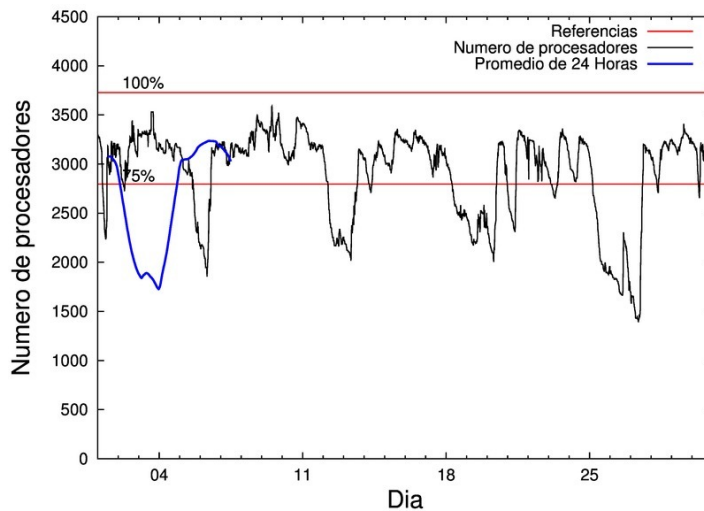


Figure 1: Cluster use. The blue line is a 24 hours average.

Table 1: Calculated time and waiting time in days of the users.

USER	GROUP	Calculated Days	Waiting Time
qovzaxxr	polymat	12971.37	0.10
poamaxg	polymat	7473.08	0.07
pobmugoj	pomps	7213.54	0.11
povrucif	polymat	7081.68	0.18
enxcacaj	egune	6157.12	0.52
povhehea	poahh	5937.95	0.43
kiadadag	pojoo	5677.90	0.11
poairurm	polymat	5499.45	0.04
povpisim	pomps	3850.08	0.12
pobmabej	potmb	2995.68	0.03
poajejec	polymat	2515.88	0.04
enblairo	egune	2359.59	0.16
dixsasam	pojoo	2264.02	0.02
enxararo	egune	1680.32	0.04
qopgobee	qocpn	1282.74	0.01
pobgrgs	pomps	980.28	0.06
kiasomal	qocpn	767.09	0.01
naaruore	nanogune	622.37	0.12
scavinam	poemg	532.81	0.03
qoaarecl	qofcm	463.31	0.00
fabusgui	qjfg	407.42	0.10
poalocad	polymat	323.17	0.00
faavzae	qfila	304.25	0.00
enbzhzh	egune	272.24	0.17
pobladej	poxlp	270.65	0.00
quamearx	qfila	257.43	0.00
qfbleoni	qjfg	210.06	0.16
qfbbaprj	qfila	193.75	0.00
kibderua	qofcm	183.19	0.02
quxmarur	qjfg	170.47	0.21
qobsalae	qambm	153.26	0.01
quaurhei	qjfg	145.98	0.01
ciairaim	poxlp	121.44	0.01
quaduree	qfila	98.68	0.00
kiaurbao	poxlp	87.45	0.00
qoprualg	qofpg	63.13	0.00
poazago	potmb	53.17	0.04
poagafrm	pojoo	49.23	0.03
pobcucua	polymat	41.67	0.16
impormaa	imaom	38.31	0.02
wmpetali	wdaga	35.30	0.01
webogare	arinadm	27.30	0.01
qobsogax	jiads	23.04	0.01
jipiloga	jiads	22.28	0.05
poplopex	pojoo	22.10	0.00
fablozoj	qfila	21.74	0.02
poaszsz	poxlp	18.63	0.01

qopcomof	qofcm	17.30	0.00
kixsasal	pojuu	17.25	0.01
poafesaa	pojuu	14.08	0.00
pobsisis	pomps	11.06	0.00
ciazuulm	pojuu	10.15	0.01
wapgoesj	wakgg	7.25	0.00
qfpmamav	qfila	5.57	0.00
bgpmuhoi	bcnsc	4.71	0.07
acplaing	jiads	4.08	0.43
poaugbia	pojuu	3.65	0.01
poaorloi	pojuu	2.88	0.00
pobmelat	arinadm	1.83	0.00
mtpmafel	mtgfa	1.81	0.00
wuppobam	wuebp	1.22	0.00
poainugn	pojuu	0.97	0.00
qfpmamoh	qfila	0.45	0.00
poatealx	pojuu	0.34	0.00
ggpzamai	ggmer	0.16	0.00
nabsagrj	nanogune	0.12	0.04

---

Table 2: Calculated time and waiting time in days of the groups.

GROUP	Calculated Days	Waiting Time
polymat	35906.29	0.06
pomps	12054.96	0.09
egune	10469.26	0.29
pojoo	8062.58	0.06
poahh	5937.95	0.43
potmb	3048.85	0.03
qocpn	2049.83	0.01
qfjfg	933.93	0.11
qfila	881.87	0.00
qofcm	663.80	0.02
nanogune	622.48	0.11
poemg	532.81	0.03
poxlp	498.17	0.00
qambm	153.26	0.01
qofpg	63.13	0.00
jiads	49.40	0.35
imaom	38.31	0.02
wdaga	35.30	0.01
arinadm	29.13	0.01
wakgg	7.25	0.00
bcnsc	4.71	0.07
mtgfa	1.81	0.00
wuebp	1.22	0.00
ggmer	0.16	0.00

## Arina Data Storage Top Users

In the following graph we plot the users having more data in Arina in the last month. If you appear in this graph, we strongly encourage you to reduce your data in Arina.

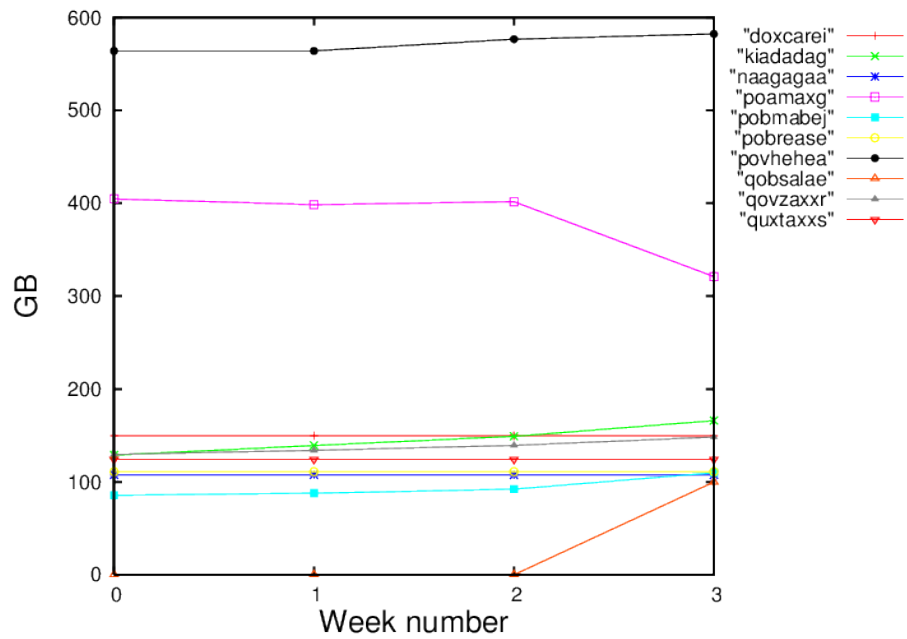


Figure 2: Storage evolution in the last month in GB.