

Estadísticas for November/2016

March 27, 2017

Arina

In this brief document we show the usage of arina during November. This month 61715 computing days were used and the average use of the cluster was 110 %. Since the first of December 631740 computing days were used and the average use of the Arina cluster was 92 %. The figure shows the usage of Arina along the month. In the first table the usage of each user is shown. The third column indicates all the time each user has used for calculation during this month. The fourth column shows the average time that each job was waiting before the it started running, in days units. In the second table, the same data as in table 1 collected by group is shown.

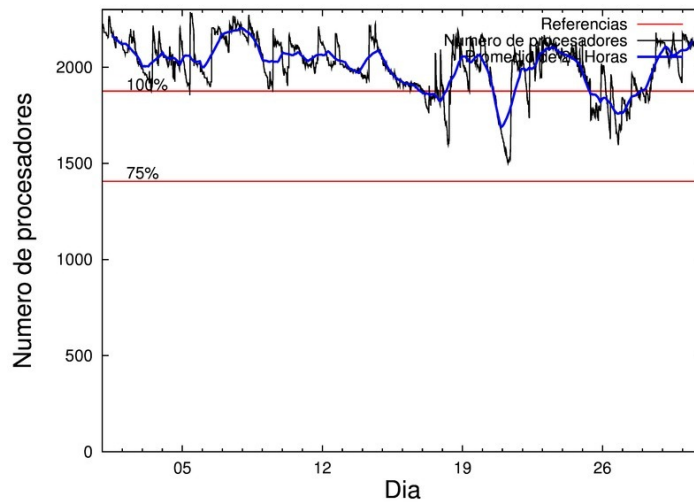


Figure 1: Cluster use. The blue line is a 24 hours average.

Table 1: Calculated time and waiting time in days of the users.

USER	GROUP	Calculated Days	Waiting Time
csazusej	nanogune	17796.17	11.13
fabusgui	qfjfg	5190.80	5.01
povhehea	poahh	2680.06	2.39
povpisim	pomps	2510.49	1.58
enxararo	egune	2473.05	0.80
bckmimoj	qfjfg	2439.22	1.50
poamaxg	polymat	2300.97	4.90
faacalea	qfjfg	2134.37	2.55
qfbgoroj	qfjfg	2048.06	1.22
juranga004	potmb	2037.42	0.35
quvvalom	qfjfg	2026.75	1.80
enxcacaj	egune	2026.35	0.99
kixgrazr	potmb	1716.42	1.98
poalocad	polymat	1561.01	0.33
pobrease	potmb	1328.49	1.62
povrucif	polymat	1283.67	2.28
qopgobee	qocpn	957.88	0.09
kiadadag	pojoo	888.87	1.15
qovzaxxr	polymat	869.88	0.37
pobmabej	potmb	702.16	0.33
poajejec	polymat	690.44	0.42
pobrease	polymat	640.91	0.49
wmpetali	wdaga	565.60	1.33
favcopee	qfjfg	431.15	0.64
pobgrgrs	pomps	381.46	0.38
navdesad	nanopeji	351.04	0.90
kibderua	qofcm	315.68	0.07
pobmugoj	pomps	302.90	0.16
povmieci	pojoo	283.64	0.81
qoaarecl	qofcm	283.09	0.05
poplopex	pojoo	282.74	0.15
kiasomal	qocpn	253.30	0.13
doxcarei	poemg	210.62	0.32
pobsisis	pomps	195.74	0.45
quxmarur	qfjfg	183.68	2.48
qfbleoni	qfjfg	163.68	3.76
mapalmau	qtftp	151.93	0.19
qoparaya	qofcm	151.36	0.08
pmarkaide001	ggmer	133.33	0.60
webogare	arinadm	103.68	0.04
qfpbaprj	qfila	88.25	0.07
favecvcp	qfjfg	78.07	0.34
anpgaetk	anjbc	55.23	0.71
scpridei	qofcm	54.99	0.07
dixsasam	pojoo	40.44	0.07
popugurj	pojoo	39.03	10.93
kixsasal	pojoo	36.43	0.17

pobmelat	arinadm	32.01	0.00
qfpmamoh	qfila	30.48	0.04
qopalpec	qofpg	30.33	0.11
ciazuulm	pojuu	23.04	0.75
mapmemam	qtftp	21.78	0.36
qoprualg	qofpg	18.05	0.06
pobcacad	pojuu	14.42	1.32
poaorloi	pojuu	13.47	0.96
kiaurbao	poxlp	13.04	0.07
kibguvej	poemg	12.95	0.03
quainbea	qfjfg	11.07	12.03
quxlegoa	qfjfg	9.53	0.82
qopcomof	qofcm	8.64	0.01
bcpitaia	bcizb	6.36	0.12
wubcavaa	wuash	6.30	0.42
acplaing	jiads	5.79	0.11
faaavzae	qfila	5.74	0.17
pobfoese	poxlp	5.07	0.14
quapuoli	qocpn	4.84	0.06
wuppobam	wuebp	2.54	0.00
quaurhei	qfjfg	1.23	0.86
scavinam	poemg	1.18	0.04
quxlilij	qufff	0.51	0.00
ciaarimei	pojuu	0.36	1.99
quaduree	qfila	0.05	0.02
poairurm	pojuu	0.02	0.01
faaatnaa	faraz	0.02	0.15
quxtaxxs	polymat	0.00	0.47
qobsalae	qambm	0.00	0.12

Table 2: Calculated time and waiting time in days of the groups.

GROUP	Calculated Days	Waiting Time
nanogune	17796.17	11.13
qfjfg	14717.61	2.27
polymat	7346.88	0.56
potmb	5784.49	0.62
egune	4499.40	0.92
pomps	3390.60	0.62
poahh	2680.06	2.39
pojoo	1622.46	0.97
qocpn	1216.01	0.10
qofcm	813.77	0.06
wdaga	565.60	1.33
nanopeji	351.04	0.90
poemg	224.75	0.14
qtftp	173.71	0.24
arinadm	135.69	0.02
ggmer	133.33	0.60
qfila	124.52	0.08
anjbc	55.23	0.71
qofpg	48.38	0.07
poxlp	18.11	0.07
bcizb	6.36	0.12
wuash	6.30	0.42
jiads	5.79	0.11
wuebp	2.54	0.00
qufff	0.51	0.00
faraz	0.02	0.15
qambm	0.00	0.12

Arina Data Storage Top Users

In the following graph we plot the users having more data in Arina in the last month. If you appear in this graph, we strongly encourage you to reduce your data in Arina.

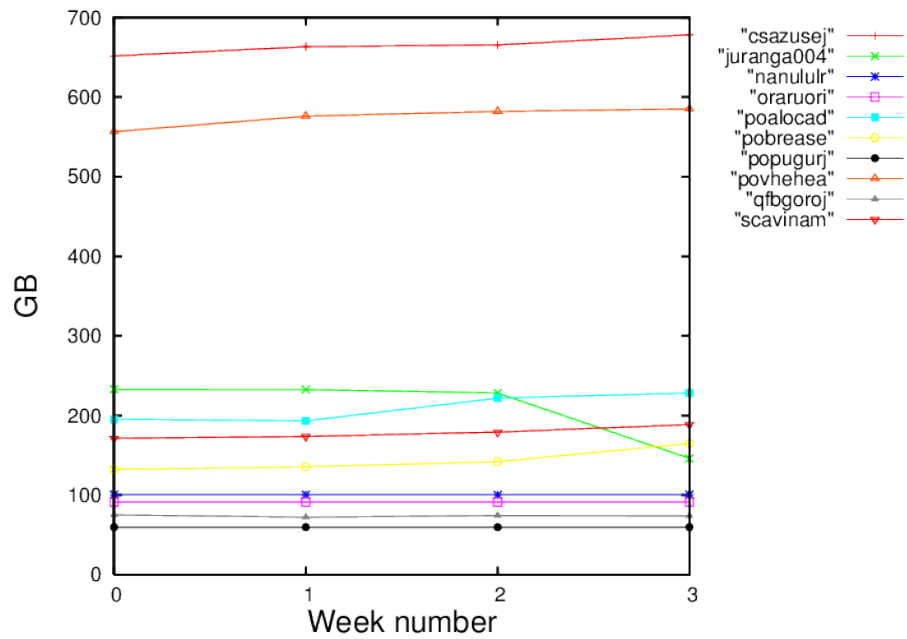


Figure 2: Storage evolution in the last month in GB.