

Estadistics for November/2014

December 1, 2014

Arina

In this brief document we show the usage of arina during November. This month 38277 computing days where used and the the average use of the cluster was 66 %. Since the first of December 425718 computing days where used and the the average use of the Arina cluster was 87 %. The figure shows the usage of Arina along the month. In the first table the usage of each user is shown. The third column indicates all the time each user has used for calculation during this month. The fourth column shows the average time that each job was waiting before the it started running, in days units. In the second table, the same data as in table 1 collected by group is shown.

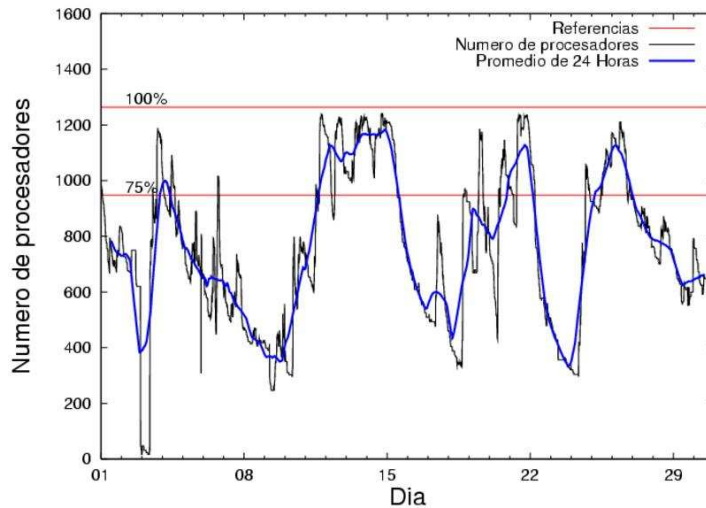


Figure 1: Cluster use. The blue line is a 24 hours average.

Table 1: Calculated time and waiting time in days of the users.

USER	GROUP	Calculated Days	Waiting Time
povhehea	poahh	11893.72	0.34
sckcorsf	nanogune	4921.17	0.02
pobfoese	poxlp	3816.25	0.25
csazusej	nanogune	3217.71	0.04
povrucif	polymat	1816.70	0.00
pobmabej	potmb	1575.58	0.01
pobmugoj	pomps	1322.78	0.02
fabusgui	qfjfg	1159.63	0.06
juranga004	potmb	994.43	0.01
kibderua	qofcm	918.04	0.00
poplopex	pojoo	884.03	0.01
nanululr	nanogune	804.13	0.31
bckmimoj	qfjfg	693.50	0.00
qfbgoroj	qfjfg	606.48	0.05
qopgobee	qocpn	492.89	0.00
qovzaxxr	qorzz	480.10	0.01
pobinini	poxlp	469.58	0.00
sckwankm	waars	468.60	0.05
pobgrgrs	pomps	413.92	0.01
kiaolfeb	qocpn	298.19	0.01
povwawaj	pojoo	202.53	0.00
povpisim	pomps	200.94	0.00
ciaazapj	poxlp	144.21	0.00
poblauro	poxlp	58.67	0.00
pobmelat	arinadm	56.97	0.00
naaalcaa	nanopeji	54.61	0.00
bcpmeale	qfjfg	41.64	0.01
qfjbaprij	qfila	36.30	0.00
acplaing	jiads	32.44	0.04
kixbebej	poxlp	32.42	0.00
favecvep	qfjfg	29.55	0.00
bavfepem	pojoo	26.93	0.00
waxpoxxy	waars	21.81	0.01
bcpfimaa	mimam	20.12	0.00
kiasomal	qocpn	19.90	0.00
qopcomof	qofcm	16.71	0.00
popugurj	pojoo	6.93	0.02
kixsasal	pojoo	6.91	0.00
meamejaj	mejisl	6.74	0.00
kaxzacai	kaizc	6.04	0.29
gbpaljod	gbmgg	2.58	0.00
pobrease	potmb	1.87	0.06
qfpesmai	qfila	1.03	0.00
qfbloala	qfala	1.03	0.00
qobmimuj	lgsgi	0.82	0.00
qfxaldad	qfllp	0.29	0.00
qfbleoni	qfjfg	0.28	0.00

acblonou	ccjla	0.22	0.00
webogare	arinadm	0.17	0.00
kixgrazr	potmb	0.02	0.01

Table 2: Calculated time and waiting time in days of the groups.

GROUP	Calculated Days	Waiting Time
poahh	11893.72	0.34
nanogune	8943.01	0.05
poxlp	4521.13	0.20
potmb	2571.90	0.01
qfjfg	2531.07	0.03
pomps	1937.63	0.01
polymat	1816.70	0.00
pojoo	1127.32	0.01
qofcm	934.75	0.00
qocpn	810.98	0.00
waars	490.41	0.04
qorzz	480.10	0.01
arinadm	57.14	0.00
nanopeji	54.61	0.00
qfila	37.33	0.00
jiads	32.44	0.04
mimam	20.12	0.00
mejsl	6.74	0.00
kaizc	6.04	0.29
gbmng	2.58	0.00
qfala	1.03	0.00
lgsgi	0.82	0.00
qflp	0.29	0.00
ccjla	0.22	0.00

Arina Data Storage Top Users

In the following graph we plot the users having more data in Arina in the last month. If you appear in this graph, we strongly encourage you to reduce your data in Arina.

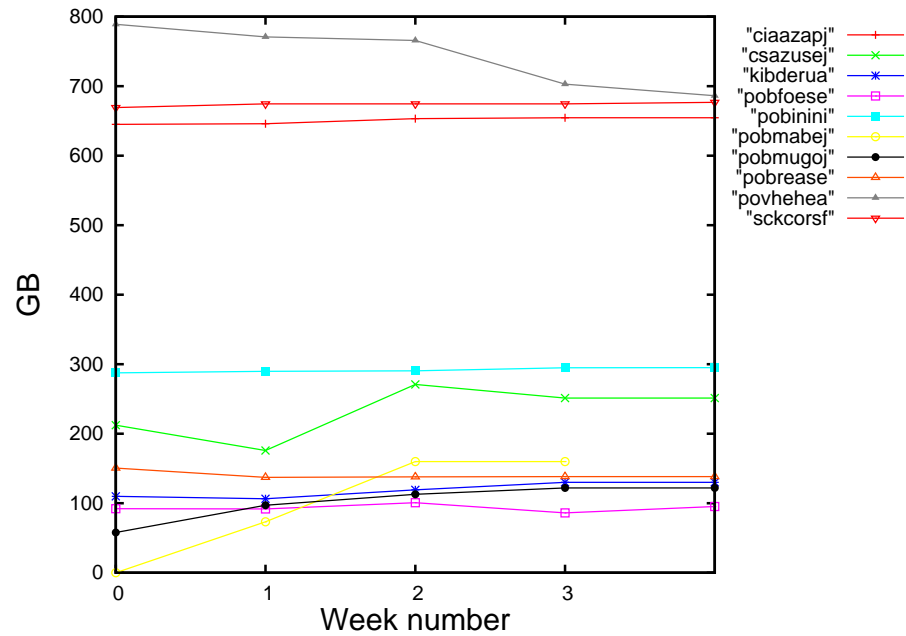


Figure 2: Storage evolution in the last month in GB.

Péndulo

This month 227 computing days were used in **Péndulo** and the the average use of the cluster was 11 %. Since the first of December 5872 computing days were used and the the average use of the cluster was 19 %. The figure shows the usage of Péndulo along the month. In the first table the usage of each user is shown. The third column indicates all the time each user has used for calculation during this month. The fourth column shows the average time that each job was waiting before the it started running, in days units. In the second table, the same data as in table 1 collected by group is shown.

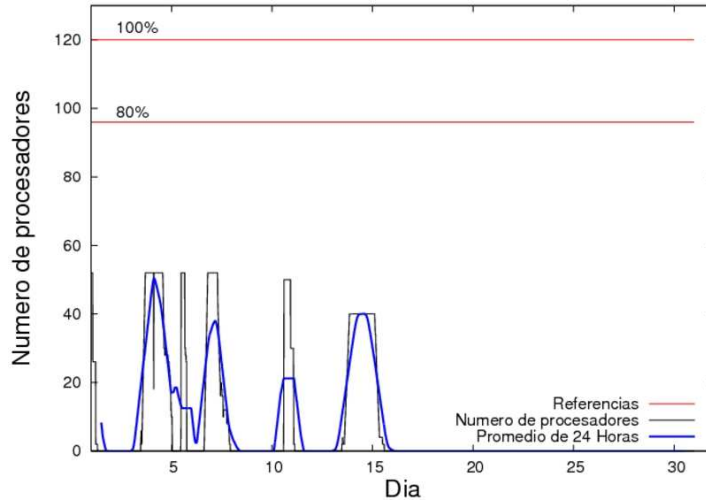


Figure 3: Cluster use. The blue line is a 24 hours average.

Table 3: Calculated time and waiting time in days of the users.

USER	GROUP	Calculated Days	Waiting Time
qovzaxxr	qofcm	225.06	0.14
sgialesk	sgkae	1.99	0.00

Table 4: Calculated time and waiting time in days of the groups.

GROUP	Calculated Days	Waiting Time
qofcm	225.06	0.14
sgkae	1.99	0.00