

Estadistics for November/2013

December 1, 2013

Arina

In this brief document we show the usage of arina during November. This month 42021 computing days were used and the the average use of the cluster was 106 %. Since the first of December 407096 computing days were used and the the average use of the Arina cluster was 83 %. The figure shows the usage of Arina along the month. In the first table the usage of each user is shown. The third column indicates all the time each user has used for calculation during this month. The fourth column shows the average time that each job was waiting before the it started running, in days units. In the second table, the same data as in table 1 collected by group is shown.

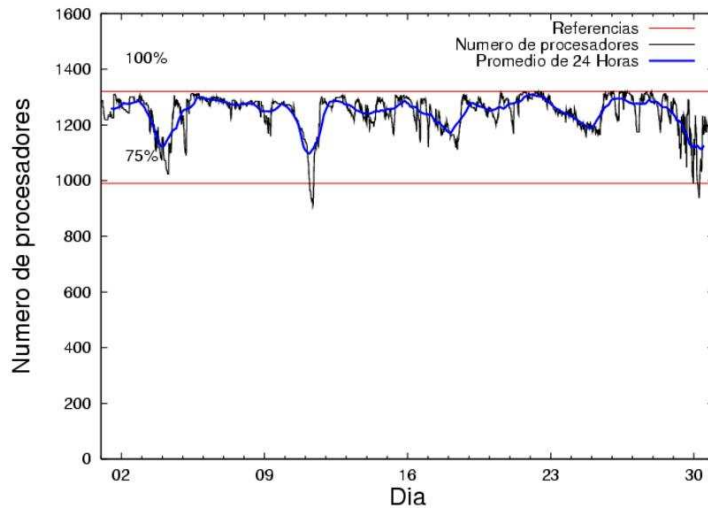


Figure 1: Cluster use. The blue line is a 24 hours average.

Table 1: Calculated time and waiting time in days of the users.

USER	GROUP	Calculated Days	Waiting Time
scpzuola	qorzz	7999.95	1.08
sckcorsf	nanogune	7370.53	1.30
povhehea	poahh	7174.04	0.35
ciaazapj	poxlp	2201.07	0.23
popugurj	pojuu	2177.48	0.21
povrucif	polymat	2004.34	0.13
csazusej	nanogune	1822.62	0.20
fabusgui	qfjfg	1728.58	0.60
bckmimoj	qfjfg	1718.51	0.44
pobmugoj	pojuu	1570.81	0.12
pobrease	potss	752.83	0.19
pmarkaide001	ggmer	746.96	1.52
pobcacad	pojuu	376.30	1.78
qopgobee	qocpn	368.95	0.06
qoaarecl	qofcm	363.93	0.07
mapalmau	qtftp	355.20	0.18
bcpfimaa	mimam	299.38	0.51
cixesesb	poxlp	270.63	0.17
pobmelat	arinadm	224.65	0.16
sgkluqun	pojuu	219.85	0.13
pobrease	pojuu	216.53	1.00
pobinini	pojuu	214.47	0.16
pobgrgrs	pojuu	198.61	0.07
qobconde	qofcm	192.87	0.05
kibderua	qofcm	192.38	0.13
qoprualg	qofpg	170.57	0.05
juranga004	potmb	136.95	0.02
quxlegoa	qfjfg	122.58	0.30
quaduree	qfila	105.92	0.06
ekpvebaa	ekjgm	98.13	0.21
sckwankm	waars	94.21	0.05
inpleibf	inffi	69.72	0.13
favecvp	qfjfg	67.35	0.56
bixcobum	gbdga	65.55	0.13
kixsasal	pojuu	58.99	0.06
gaazareg	injss	46.14	0.05
etpmamap	etjfm	36.96	0.01
bcpremae	bcdbu	34.77	0.42
poplopex	pojuu	33.19	0.03
waxpoxxy	waars	23.48	0.19
qobfifib	qocpn	19.03	0.57
etpdihei	etjfm	15.96	0.11
qoparaya	qofcm	15.87	0.00
bavfepem	pojuu	9.85	0.06
qfpesmai	qfila	9.65	0.01
qovzaxxr	qorzz	8.54	0.05
favcopee	qfjfg	6.62	0.05

qopcomof	qofcm	3.13	0.03
naamamap	nanogune	3.05	0.03
baxrarat	baeaa	2.80	0.18
wuppobam	wuebp	0.36	0.01
webogare	arinadm	0.23	0.03
pobmabej	pojoo	0.01	0.01
acblonou	ccjla	0.01	0.00
quxbabai	qfjfg	0.00	0.01

Table 2: Calculated time and waiting time in days of the groups.

GROUP	Calculated Days	Waiting Time
nanogune	9196.21	0.12
qorz	8008.49	1.03
poahh	7174.04	0.35
pojoo	5076.09	0.12
qfjfg	3643.63	0.46
poxlp	2471.70	0.23
polymat	2004.34	0.13
qofcm	768.19	0.08
potss	752.83	0.19
ggmer	746.96	1.52
qocpn	387.97	0.12
qtftp	355.20	0.18
mimam	299.38	0.51
arinadm	224.88	0.12
qofpg	170.57	0.05
potmb	136.95	0.02
waars	117.70	0.06
qfila	115.57	0.03
ekjgm	98.13	0.21
infi	69.72	0.13
gbdga	65.55	0.13
etjfm	52.93	0.11
injss	46.14	0.05
bcdbu	34.77	0.42
baeaa	2.80	0.18
wuebp	0.36	0.01
ccjla	0.01	0.00

Arina Data Storage Top Users

In the following graph we plot the users having more data in Arina in the last month. If you appear in this graph, we strongly encourage you to reduce your data in Arina.

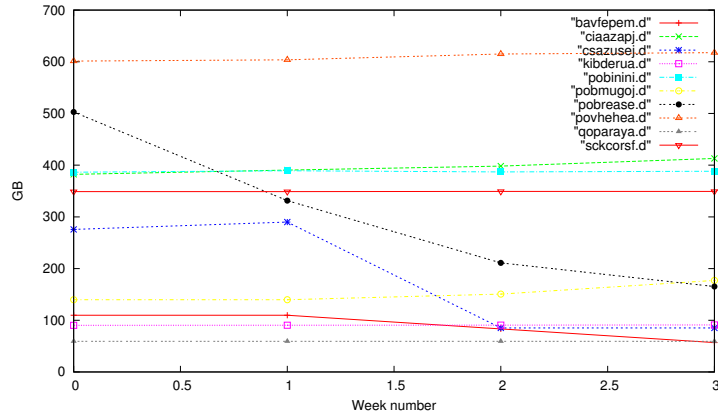


Figure 2: Storage evolution in the last month (in GB).

Péndulo

This month 92 computing days were used in **Péndulo** and the the average use of the cluster was 4 %. Since the first of December 1564 computing days were used and the the average use of the cluster was 5 %. The figure shows the usage of Péndulo along the month. In the first table the usage of each user is shown. The third column indicates all the time each user has used for calculation during this month. The fourth column shows the average time that each job was waiting before the it started running, in days units. In the second table, the same data as in table 1 collected by group is shown.

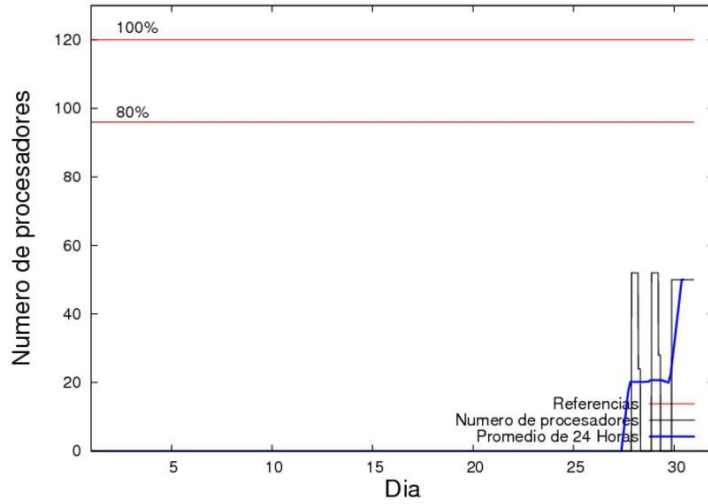


Figure 3: Cluster use. The blue line is a 24 hours average.

Table 3: Calculated time and waiting time in days of the users.

USER	GROUP	Calculated Days	Waiting Time
qovzaxxr	qofcm	91.77	0.89

Table 4: Calculated time and waiting time in days of the groups.

GROUP	Calculated Days	Waiting Time
qofcm	91.77	0.89