

# Estadistics for November/2012

December 4, 2012

## Arina

In this brief document we show the usage of arina during November. This month 43593 computing days were used and the the average use of the cluster was 104 %. Since the first of December 399248 computing days were used and the the average use of the Arina cluster was 79 %. The figure shows the usage of Arina along the month. In the first table the usage of each user is shown. The third column indicates all the time each user has used for calculation during this month. The fourth column shows the average time that each job was waiting before the it started running, in days units. In the second table, the same data as in table 1 collected by group is shown.

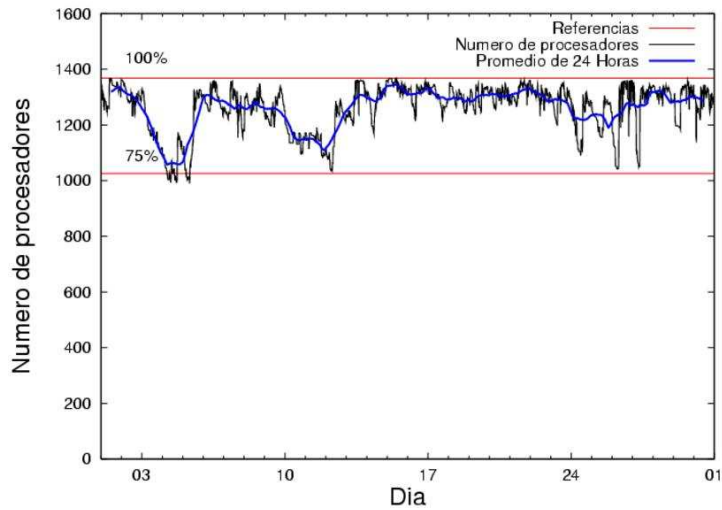


Figure 1: Cluster use. The blue line is a 24 hours average.

Table 1: Calculated time and waiting time in days of the users.

USER	GROUP	Calculated Days	Waiting Time
sckcorsf	nanogune	12637.33	0.25
povhehea	poahh	6623.39	1.00
csazusej	nanogune	6531.08	0.87
povwawaj	pojuu	2968.87	1.97
favcopee	qfjfg	1910.00	0.47
qoaarecl	qofcm	1487.84	0.45
qopgobee	qocpn	1103.36	0.18
scpzuola	qorzz	1084.72	1.46
pobrease	potss	1060.61	0.68
wmbgavem	waets	831.69	0.48
povrucif	poxlp	600.26	0.18
kibpapaa	qorzz	524.42	1.23
kibmeheg	pojuu	519.43	0.10
qoparaya	qofcm	509.12	0.31
bckmimoj	qfjfg	459.04	0.20
ciaazapj	poxlp	454.25	0.16
quxbabai	qfjfg	452.24	0.04
pobgrgrs	pojuu	425.67	0.04
popugurj	pojuu	407.62	0.29
webogare	arinadm	326.46	0.06
bcpremae	bcdbu	311.68	0.20
bcpmeale	qffbe	296.57	1.45
kibderua	qofcm	290.89	0.20
iapgarue	iaegr	289.48	0.07
pobmugoj	pojuu	233.21	0.04
juranga004	potmb	207.38	0.04
qobconde	qofcm	143.26	0.18
poalolog	poxlp	129.85	0.30
qfpesmai	qfila	112.91	0.02
qfploarf	qfila	102.70	0.12
cixesesb	poxlp	98.74	0.14
wabpepaa	waars	97.13	0.50
qovzaxxr	qorzz	64.30	0.26
nabzezem	nanogune	47.86	0.01
kixsasal	pojuu	45.90	0.12
poplopex	pojuu	41.38	0.01
pobrease	pojuu	38.04	0.24
qfpbaprj	qfila	23.37	0.03
qopcomof	qofcm	22.25	0.05
pobmelat	arinadm	18.81	0.01
pobinini	pojuu	14.59	0.01
bcpitaia	bcizb	13.68	0.01
qoprualg	qofpg	12.74	0.43
meppesag	qtftp	12.50	0.02
pobmabej	pojuu	8.53	0.03
qfpmamoh	qfila	3.66	0.13
qfbloala	qfala	2.14	0.00

wmpabuf	wmjcd	2.01	0.11
wuppobam	wuebp	0.97	0.00
jtpanlod	jtjob	0.89	0.95
mapalmai	qtftp	0.06	1.18
bpcacaa	mimam	0.00	0.09

Table 2: Calculated time and waiting time in days of the groups.

GROUP	Calculated Days	Waiting Time
nanogune	19216.27	0.38
poahh	6623.39	1.00
pojoo	4703.24	0.08
qfjfg	2821.28	0.12
qofcm	2453.37	0.32
qorzz	1673.44	1.24
poxlp	1283.11	0.20
qocpn	1103.36	0.18
potss	1060.61	0.68
waets	831.69	0.48
arinadm	345.26	0.05
bcdbu	311.68	0.20
qffbe	296.57	1.45
iaegr	289.48	0.07
qfila	242.65	0.05
potmb	207.38	0.04
waars	97.13	0.50
bcizb	13.68	0.01
qofpg	12.74	0.43
qtftp	12.56	0.05
qfala	2.14	0.00
wmjcd	2.01	0.11
wuebp	0.97	0.00
jtjob	0.89	0.95
mimam	0.00	0.09

## Pendolo

This month 980 computing days were used in **Pendolo** and the the average use of the cluster was 46 %. Since the first of December 2833 computing days were used and the the average use of the cluster was 9 %. The figure shows the usage of Pendolo along the month. In the first table the usage of each user is shown. The third column indicates all the time each user has used for calculation during this month. The fourth column shows the average time that each job was waiting before the it started running, in days units. In the second table, the same data as in table 1 collected by group is shown.

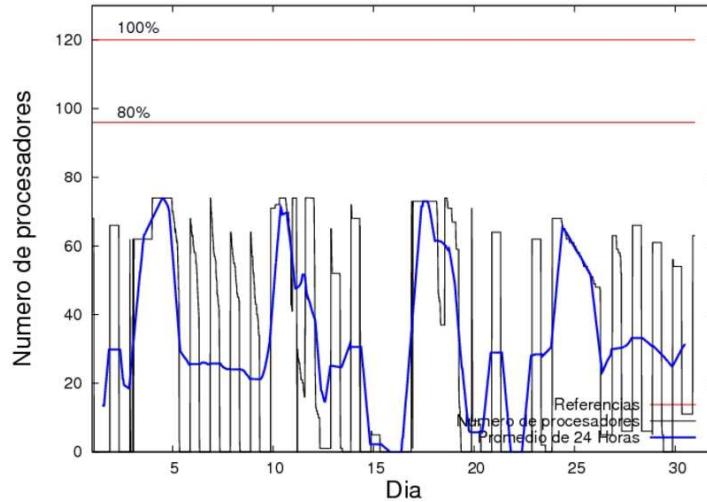


Figure 2: Cluster use. The blue line is a 24 hours average.

Table 3: Calculated time and waiting time in days of the users.

USER	GROUP	Calculated Days	Waiting Time
jtpanlod	jtjob	976.24	0.87
ieptapuj	ieflm	3.29	0.45
pobmelat	arinadm	0.35	0.28
webogare	arinadm	0.00	0.00

Table 4: Calculated time and waiting time in days of the groups.

GROUP	Calculated Days	Waiting Time
jtjob	976.24	0.87
ieflm	3.29	0.45
arinadm	0.35	0.14

## Ikerbasque machine

The service has access to 208 xeon cores in this machine, which are older than Arina's ones. The codes of only few big users are maintained there to optimize the maintenance time. This month 11750 computing days were used in **Ikerbasque** machine and the the average use of the cluster was 188 %. Since the first of December 67131 computing days were used and the the average use of the cluster was 88 %. In the first table the usage of each user is shown. The third column indicates all the time each user has used for calculation during this month. The fourth column shows the average time that each job was waiting before the it started running, in days units. In the second table, the same data as in table 1 collected by group is shown.

Table 5: Calculated time and waiting time in days of the users.

USER	GROUP	Calculated Days	Waiting Time
scpzuola	qorzz	5148.50	0.00
kibpapaa	qorzz	6231.11	0.00
pobmugoj	pojuu	370.78	0.00

Table 6: Calculated time and waiting time in days of the groups.

GROUP	Calculated Days	Waiting Time
qorzz	11379.60	0.00
pojuu	370.78	0.00