

Estadistics for November/2011

December 23, 2011

Arina

In this brief document we show the usage of arina during November. This month 24618 computing days where used and the the average use of the cluster was 59 %. Since the first of December 216053 computing days where used and the the average use of the cluster was 74 %. The figure shows the usage of Arina along the month. In the first table the usage of each user is shown. The third column indicates all the time each user has used for calculation during this month. The fourth column shows the average time that each job was waiting before the it started running, in days units. In the second table, the same data as in table 1 collected by group is shown.

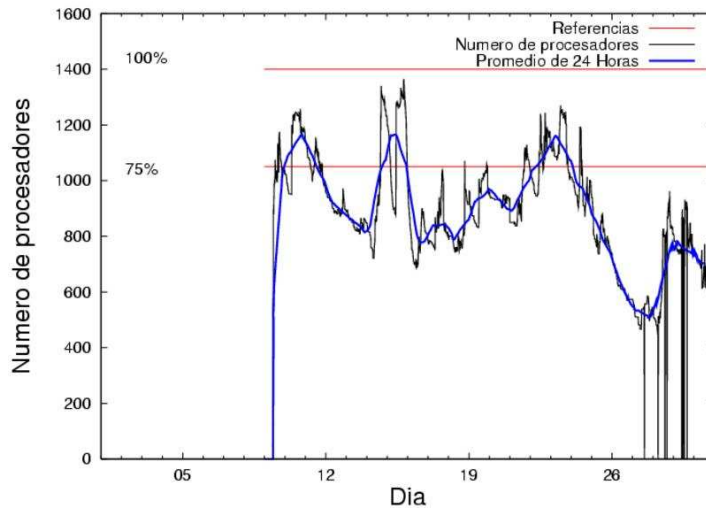


Figure 1: Cluster use. The blue line is a 24 hours average.

Table 1: Calculated time and waiting time in days of the users.

USER	GROUP	Calculated Days	Waiting Time
povhehea	poahh	3834.36	0.24
scpfralm	qorzz	3126.82	0.23
favcopee	qjfg	1650.61	0.88
scpzuola	qorzz	1530.71	0.34
povwawaj	pojoo	1238.52	0.09
qfbleoni	qjfg	1163.20	1.29
wabeslel	waars	1152.47	0.16
quxlegoa	qjfg	1136.22	1.25
wmbgavem	waets	765.66	0.06
ciaazapj	poxlp	746.81	0.02
kibpapaa	qorzz	744.33	0.04
pobrease	pojoo	705.59	0.14
popugurj	pojoo	701.61	0.12
acblonou	ccjla	628.98	0.39
qopgobee	qocpn	610.46	0.02
pobmelat	arinadm	600.02	0.16
cixesesb	poxlp	531.88	0.10
bpcacaa	mimam	408.00	0.07
kibderua	qofcm	399.95	0.05
wabpepaa	waars	357.48	0.25
pobmugoj	pojoo	321.20	0.19
qoparaya	qofcm	290.92	0.01
poxmafie	potss	268.06	0.02
pobrease	potss	194.41	0.11
povrucif	poxlp	187.88	0.06
pobgrgrs	pojoo	183.28	0.07
etpdihei	etjfm	160.74	0.01
poblairo	poxlp	158.57	0.03
pobinini	pojoo	155.69	0.01
poplopex	pojoo	113.78	0.20
bcpfmaa	mimam	101.83	0.36
qobconde	qofcm	83.09	0.16
waptctce	waets	76.59	0.01
bcpitaia	bcizb	60.12	0.01
kibmeheg	pojoo	39.92	0.09
qovzaxxr	qorzz	37.59	0.05
bcpremae	bcdbu	33.47	0.05
favecvep	qjfg	28.59	0.02
kixmagre	poxlp	23.44	0.01
bekmimoj	qjfg	21.80	0.01
qfbbaprj	qfila	13.88	0.00
webogare	arinadm	9.96	0.08
quxbabai	qjfg	7.17	0.00
iapgarue	iaegr	5.31	0.00
qoaarecl	qofcm	2.30	0.00
qopcomof	qofcm	2.25	0.00
qobmimuj	lgsgi	2.23	0.00

pobmabej	pojoo	1.84	0.00
pmarkaide001	ggmer	1.45	0.03
mapalmau	magps	0.95	0.00
qfbloala	qfala	0.33	0.00
mapmemam	qtftp	0.32	0.00
jtpanlod	jtjob	0.22	0.22
qoprualg	qofpg	0.08	0.00
meppesag	qtftp	0.01	0.13
waxpoxxy	waars	0.00	0.04
povpisim	pomps	0.00	0.00

Table 2: Calculated time and waiting time in days of the groups.

GROUP	Calculated Days	Waiting Time
qorzz	5439.45	0.23
qfjfg	4007.59	0.53
poahh	3834.36	0.24
pojoo	3461.43	0.16
poxlp	1648.57	0.04
waars	1509.95	0.22
waets	842.25	0.05
qofcm	778.51	0.05
ccjla	628.98	0.39
qocpn	610.46	0.02
arinadm	609.97	0.13
mimam	509.83	0.11
potss	462.47	0.09
etjfm	160.74	0.01
bcizb	60.12	0.01
bcdbu	33.47	0.05
qfila	13.88	0.00
iaegr	5.31	0.00
lgsgi	2.23	0.00
ggmer	1.45	0.03
magps	0.95	0.00
qtftp	0.33	0.01
qfala	0.33	0.00
jtjob	0.22	0.22
qofpg	0.08	0.00
pomps	0.00	0.00

Pendolo

This month 11 computing days were used in **Pendolo** and the the average use of the cluster was 1 %. Since the first of December 3634 computing days were used and the the average use of the cluster was 12 %. The figure shows the usage of Pendolo along the month. In the first table the usage of each user is shown. The third column indicates all the time each user has used for calculation during this month. The fourth column shows the average time that each job was waiting before the it started running, in days units. In the second table, the same data as in table 1 collected by group is shown.

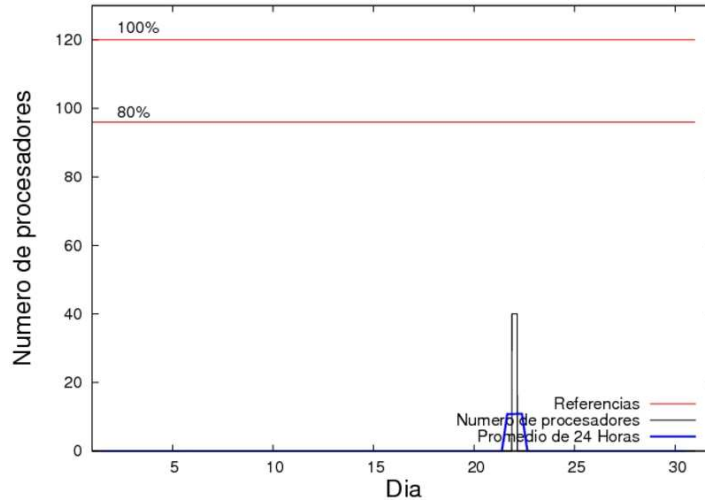


Figure 2: Cluster use. The blue line is a 24 hours average.

Table 3: Calculated time and waiting time in days of the users.

USER	GROUP	Calculated Days	Waiting Time
------	-------	-----------------	--------------

Table 4: Calculated time and waiting time in days of the groups.

GROUP	Calculated Days	Waiting Time
-------	-----------------	--------------

Ikerbasque machine

The service has access to 208 xeon cores in this machine, which are older than Arina's ones. The codes of only few big users are maintained there to optimize the maintenance time. This month 3054 computing days were used in **Ikerbasque** machine and the the average use of the cluster was 48 %. Since the first of June 19683 computing days were used and the the average use of the cluster was 51 %. In the first table the usage of each user is shown. The third column indicates all the time each user has used for calculation during this month. The fourth column shows the average time that each job was waiting before the it started running, in days units. In the second table, the same data as in table 1 collected by group is shown.

Table 5: Calculated time and waiting time in days of the users.

USER	GROUP	Calculated Days	Waiting Time
povhehea	poahh	1539.98	1.03
pobmugoj	pojoo	936.20	0.14
kibpapaa	qorzz	388.16	0.02
scpzuola	qorzz	189.74	0.25

Table 6: Calculated time and waiting time in days of the groups.

GROUP	Calculated Days	Waiting Time
poahh	1539.98	1.03
pojoo	936.20	0.14
qorzz	577.91	0.20