

# Estadistics for October/2019

November 1, 2019

## Arina

In this brief document we show the usage of arina during October. This month 105164 computing days were used and the the average use of the cluster was 91 %. Since the first of December 991767 computing days were used and the the average use of the Arina cluster was 79 %. The figure shows the usage of Arina along the month. In the first table the usage of each user is shown. The third column indicates all the time each user has used for calculation during this month. The fourth column shows the average time that each job was waiting before the it started running, in days units. In the second table, the same data as in table 1 collected by group is shown.

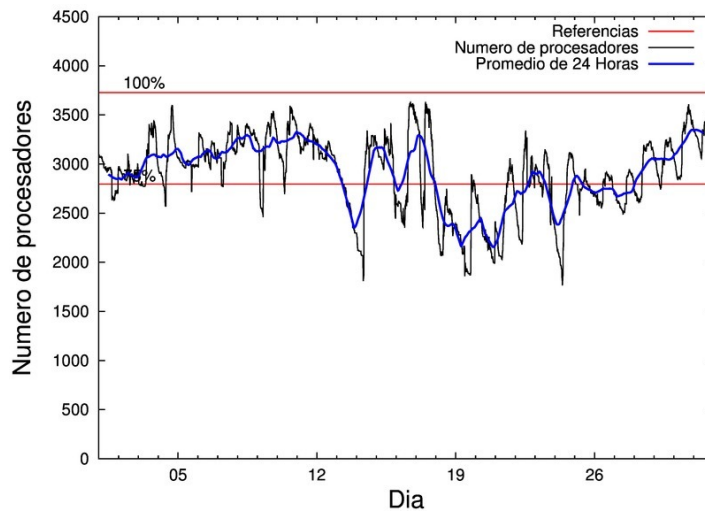


Figure 1: Cluster use. The blue line is a 24 hours average.

Table 1: Calculated time and waiting time in days of the users.

USER	GROUP	Calculated Days	Waiting Time
povhehea	poahh	24541.62	1.66
qovzaxxr	polymat	14658.98	0.12
enxararo	egune	6503.17	1.18
povwawaj	pojoo	5979.92	0.95
enbxilij	egune	4892.64	0.37
faacalea	qfjfg	4341.60	0.01
poaugbia	pojoo	4027.60	0.14
bcpliolj	bgjbp	3701.89	0.73
sckahnom	potmb	3324.09	0.35
doxcarei	poemg	3186.76	0.28
poarloi	pojoo	2476.16	0.06
scavinam	poemg	2378.50	0.52
povrucif	polymat	2305.84	0.04
qfpmamoh	qfila	1972.38	0.08
kixmagre	poemg	1945.76	0.89
quxtaxxs	polymat	1902.72	0.05
poairurm	polymat	1421.66	0.23
quxmarur	qfjfg	1239.17	0.74
povracoe	pomps	1235.16	7.88
poamaxg	polymat	1217.94	0.00
pobladej	poxlp	1194.72	0.01
pobrease	potmb	842.15	0.05
quainbea	qfjfg	751.47	0.01
csazusej	nanogune	748.15	0.38
kiaolfeb	potss	663.46	1.98
enbropes	egune	617.98	0.02
scpridei	qofcm	603.71	0.00
quamearx	qfila	537.10	0.12
qopgobee	qocpn	470.48	0.00
qobcacea	qocpn	436.79	0.00
pobdadae	poxlp	397.47	0.08
poagafrm	pojoo	387.18	0.26
dibxuxux	poxlp	342.27	0.02
popporiv	poxlp	306.85	0.12
qobpamap	qocpn	305.39	0.00
pobmabej	potmb	295.79	0.00
quxlegoa	qfjfg	294.38	0.12
quarulob	qfjfg	263.76	0.02
qubhohol	qocpn	259.30	0.00
pobmelat	arinadm	249.09	0.01
ciazuulm	pojoo	247.41	0.12
popugurj	pojoo	173.19	0.01
pobfoese	poxlp	161.18	0.00
bgpjiagd	bgjbp	158.87	1.16
qfpesmai	qfila	156.78	0.02
kibderua	qoabl	149.38	0.00
kiasomal	qocpn	121.10	0.00

qfbalale	qfjfg	120.39	0.08
dixsasam	pojuu	106.52	0.00
qfpbaprij	qfila	96.03	0.00
poanacuj	polymat	74.28	0.00
fabusgui	qfjfg	70.40	0.01
pobnanac	poemg	63.80	0.01
kixgrazr	potmb	60.50	0.01
quaegmae	qocpn	43.37	0.00
wmpetali	wdaga	35.52	0.00
qoprualg	qofpg	32.17	0.00
fsbikasl	fsfsb	30.71	0.03
enxcacaj	egune	16.04	0.00
qubcaxxc	qfjfg	10.73	0.00
pobtmb01	potmb	6.61	0.00
enbzhzh	egune	3.57	0.06
povmieci	pojuu	3.49	0.00
qfbolsaa	qfila	1.10	0.00
biadecum	bicgm	1.08	0.02
ggpzamai	ggmer	0.96	3.64
poatealx	pojuu	0.17	0.00
povdesad	poxlp	0.13	0.24
poadarj	poxlp	0.05	0.00
oibargia	oijgc	0.02	0.01
ciaansap	pojuu	0.02	0.00
qopcomof	qofcm	0.01	0.00
nabkoxxn	nanogune	0.01	0.01
poasibrd	poxlp	0.00	0.00
navdesad	nanopeji	0.00	0.00

---

Table 2: Calculated time and waiting time in days of the groups.

GROUP	Calculated Days	Waiting Time
poahh	24541.62	1.66
polymat	21581.42	0.07
pojoo	13401.66	0.12
egune	12033.40	0.89
poemg	7574.82	0.43
qfjfg	7091.90	0.06
potmb	4529.14	0.09
bgjbp	3860.76	0.79
qfila	2763.38	0.09
poxlp	2402.67	0.03
qocpn	1636.44	0.00
pomps	1235.16	7.88
nanogune	748.16	0.22
potss	663.46	1.98
qofcm	603.72	0.00
arinadm	249.09	0.01
qoabl	149.38	0.00
wdaga	35.52	0.00
qofpg	32.17	0.00
fsfsb	30.71	0.03
bicgm	1.08	0.02
ggmer	0.96	3.64
oijgc	0.02	0.01
nanopeji	0.00	0.00

## Arina Data Storage Top Users

In the following graph we plot the users having more data in Arina in the last month. If you appear in this graph, we strongly encourage you to reduce your data in Arina.

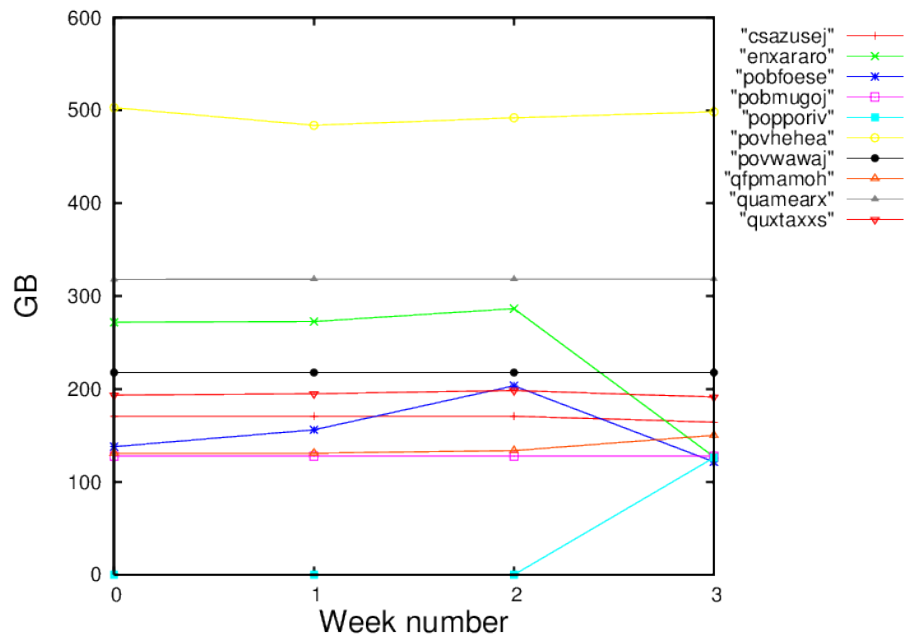


Figure 2: Storage evolution in the last month in GB.