

Estadistics for October/2018

November 1, 2018

Arina

In this brief document we show the usage of arina during October. This month 101882 computing days were used and the the average use of the cluster was 88 %. Since the first of December 976281 computing days were used and the the average use of the Arina cluster was 78 %. The figure shows the usage of Arina along the month. In the first table the usage of each user is shown. The third column indicates all the time each user has used for calculation during this month. The fourth column shows the average time that each job was waiting before the it started running, in days units. In the second table, the same data as in table 1 collected by group is shown.

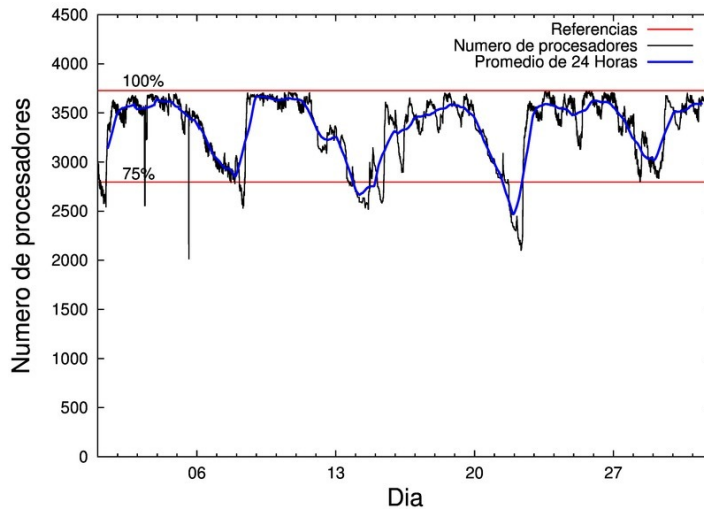


Figure 1: Cluster use. The blue line is a 24 hours average.

Table 1: Calculated time and waiting time in days of the users.

USER	GROUP	Calculated Days	Waiting Time
qovzaxxr	polymat	17823.02	0.62
povhehea	poahh	16624.75	1.22
povrucif	polymat	12967.43	0.20
povwawaj	pojoo	9008.13	0.19
pobluluv	poxlp	5840.30	1.07
poaganau	polymat	4920.15	0.06
pobmugoj	pomps	3267.80	0.04
pobmabej	potmb	2578.59	0.06
poaugbia	pojoo	1946.93	0.09
sckahnom	potmb	1944.50	0.04
pobrease	potmb	1901.63	0.05
poblairo	poxlp	1809.29	0.05
csazusej	nanogune	1617.37	0.13
poarloi	pojoo	1476.54	0.05
wabgaari	waaap	1383.93	0.42
pobfoese	poxlp	1329.39	0.05
popugurj	pojoo	1319.76	0.10
poairurm	polymat	1080.86	0.06
poarugua	pojoo	1048.77	0.04
poajejec	polymat	929.46	0.12
quxtaxxs	polymat	860.28	0.07
poagafrm	pojoo	805.02	0.08
quamearx	qfila	726.84	0.00
qopgobee	qocpn	680.60	0.02
pobgrgs	pomps	661.56	0.01
kibderua	qofcm	605.25	0.01
enbzhzh	egune	564.01	0.20
kiasomal	qocpn	480.33	0.05
fabusgui	qjfg	450.53	0.01
qobpamap	qocpn	417.22	0.02
qoapefuh	qocpn	399.21	0.02
enxararo	egune	389.64	0.04
popporiv	poxlp	352.46	0.05
pobladej	poxlp	342.86	0.18
scavinam	poemg	338.04	0.05
wmpetali	wdaga	255.88	0.16
ciaansap	pojoo	239.05	0.01
quxlegoa	qjfg	232.68	0.09
kiadadag	pojoo	226.14	0.10
enblairo	egune	214.03	0.14
qfpmamoh	qfila	209.64	0.03
poplopex	pojoo	183.40	0.01
qfbleoni	qjfg	171.76	0.05
kixgrazr	potmb	160.00	0.00
poanacuj	polymat	147.83	0.05
kiaolfeb	potss	146.79	0.01
qopcomof	qofcm	119.03	0.10

qfpesmai	qfila	96.63	0.01
qoparaya	qofcm	91.52	0.02
bckmimoj	qfjfg	81.40	0.10
favcopee	qfjfg	72.22	1.01
naplodud	nanogune	68.78	0.02
favecvep	qfjfg	47.64	0.00
webogare	arinadm	44.13	0.65
qobzazag	qocpn	34.35	0.02
quaurhei	qfjfg	27.79	0.04
enbxilij	egune	22.94	0.14
faacalea	qfjfg	15.25	0.00
ciazuulm	pojju	14.08	0.07
pobsisis	pomps	13.19	0.00
qfjbaprij	qfila	11.10	0.00
poblacoj	pojju	9.49	0.03
qoprualg	qofpg	8.14	0.00
scpridei	qofcm	5.42	0.01
qfbolsaa	qfila	5.20	0.02
povracoe	pomps	4.83	0.00
qfbloala	qfjfg	3.91	0.02
quainbea	qfjfg	1.62	0.08
kixsasal	pojju	1.26	0.00
pobmelat	arinadm	1.13	0.01
bczabgab	casgi	0.47	0.01
wuppobam	wuebp	0.35	0.00
poatealx	pojju	0.27	0.01
bgpmuhoi	bcnsc	0.23	0.00
kiaurbao	poxlp	0.03	0.01
improagj	imfmg	0.02	0.00
povpisim	pomps	0.00	0.00
ciaolarb	pojju	0.00	0.00
ciaalece	pojju	0.00	0.00

Table 2: Calculated time and waiting time in days of the groups.

GROUP	Calculated Days	Waiting Time
polymat	38729.02	0.20
poahh	16624.75	1.22
pojoo	16278.84	0.10
poxlp	9674.32	0.18
potmb	6584.72	0.05
pomps	3947.38	0.02
qocpn	2011.71	0.03
nanogune	1686.15	0.05
waaap	1383.93	0.42
egune	1190.63	0.10
qfjfg	1104.81	0.48
qfila	1049.41	0.00
qofcm	821.22	0.02
poemg	338.04	0.05
wdaga	255.88	0.16
potss	146.79	0.01
arinadm	45.25	0.52
qofpg	8.14	0.00
casgi	0.47	0.01
wuebp	0.35	0.00
bcnsc	0.23	0.00
imfmg	0.02	0.00

Arina Data Storage Top Users

In the following graph we plot the users having more data in Arina in the last month. If you appear in this graph, we strongly encourage you to reduce your data in Arina.

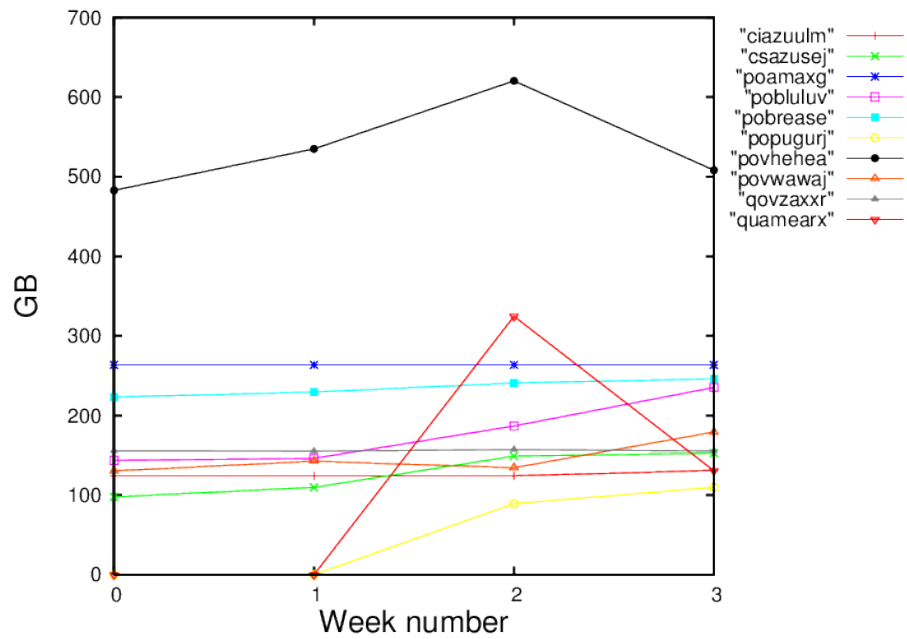


Figure 2: Storage evolution in the last month in GB.