

Estadistics for October/2017

November 1, 2017

Arina

In this brief document we show the usage of arina during October. This month 68853 computing days where used and the the average use of the cluster was 60 %. Since the first of December 643236 computing days where used and the the average use of the Arina cluster was 71 %. The figure shows the usage of Arina along the month. In the first table the usage of each user is shown. The third column indicates all the time each user has used for calculation during this month. The fourth column shows the average time that each job was waiting before the it started running, in days units. In the second table, the same data as in table 1 collected by group is shown.

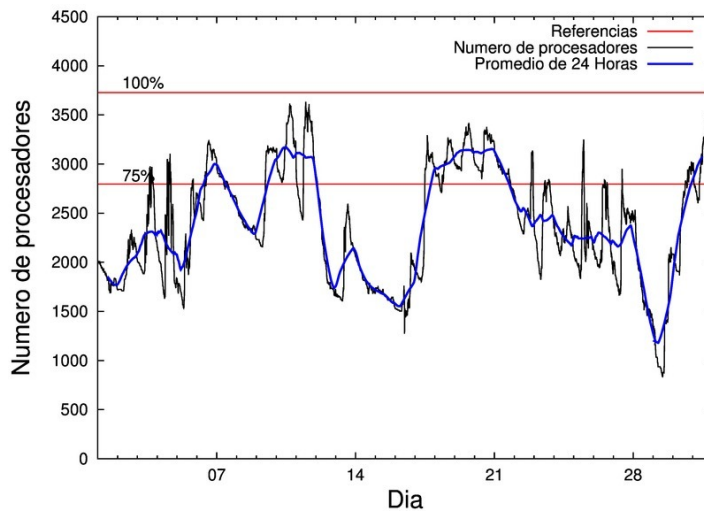


Figure 1: Cluster use. The blue line is a 24 hours average.

Table 1: Calculated time and waiting time in days of the users.

USER	GROUP	Calculated Days	Waiting Time
qovzaxxr	polymat	19180.19	0.06
poamaxg	polymat	6657.96	0.04
povpisim	pomps	5606.99	0.04
povrucif	polymat	5421.31	0.06
pobmugoj	pomps	5005.14	0.19
enxararo	egune	4440.87	0.09
enxcacaj	egune	2966.30	0.12
poajejec	polymat	2046.31	0.01
kiadadag	pojuu	1713.39	0.28
pobgrgrs	pomps	1670.63	0.04
kiasomal	qocpn	1586.52	0.01
scavinam	poemg	1517.27	0.01
poalocad	polymat	1390.73	0.00
enblairo	egune	1217.21	0.11
dixsasam	pojuu	1199.71	0.01
faavzae	qfila	1179.13	0.00
povhehea	poahh	934.91	0.01
qopgobee	qocpn	788.12	0.00
enbzhzh	egune	681.06	0.03
pobmabej	potmb	606.34	0.00
naaruore	nanogune	601.45	0.09
poairurm	polymat	515.69	0.01
quamearx	qfila	344.67	0.00
kiaolfeb	potss	249.09	0.00
ciairaim	poxlp	176.41	0.00
qfbbaprj	qfila	139.17	0.00
poasibrd	poxlp	133.99	0.17
quainbea	qfjfg	103.76	0.01
pobrease	potmb	102.08	0.00
cixesgos	pojuu	97.12	0.00
kiaurbao	poxlp	84.71	0.00
qfbleoni	qfjfg	72.64	0.01
poazago	potmb	64.01	0.01
favecvp	qfjfg	60.03	0.08
jipiloga	jiads	54.83	0.09
podoodj	potmb	43.79	0.00
poarloi	pojuu	35.79	0.00
quaasanm	qfjfg	27.35	0.00
fabusgui	qfjfg	26.56	0.09
ciazuulm	pojuu	24.73	0.00
quvvalom	qfjfg	24.35	0.00
poagafm	pojuu	21.06	0.00
quxdedev	qocpn	14.91	0.00
pobladej	poxlp	13.43	0.00
kibderua	qofcm	8.79	0.01
qobsogax	jiads	7.35	0.05
qfpmamav	qfila	5.82	0.00

quxmarur	qfjfg	5.05	0.06
qoaarecl	qofcm	1.31	0.01
kixsasal	pojju	1.16	0.00
wuppobam	wuebp	0.96	0.00
acplaing	jiads	0.72	0.00
scpridei	qofcm	0.57	0.00
webogare	arinadm	0.56	0.01
pobmelat	arinadm	0.23	0.00
poaugbia	pojju	0.19	0.00
faacalea	qfjfg	0.16	0.00
qobmimuj	lgsgi	0.05	0.00
poafesaa	pojju	0.04	0.00
martetxe003	jiads	0.04	0.00
kixgrazr	potmb	0.02	0.07
bgpmuhoi	bcnsc	0.01	0.05
qobsalae	qambm	0.00	0.00
nabsagrj	nanogune	0.00	0.00
mtpmafel	mtgfa	0.00	0.00
doxcarei	poemg	0.00	0.00

Table 2: Calculated time and waiting time in days of the groups.

GROUP	Calculated Days	Waiting Time
polymat	35212.19	0.02
pomps	12282.76	0.08
egune	9305.44	0.09
pojju	3093.19	0.07
qocpn	2389.55	0.01
qfila	1668.79	0.00
poemg	1517.27	0.01
poahh	934.91	0.01
potmb	816.24	0.01
nanogune	601.46	0.09
poxlp	408.54	0.01
qfjfg	319.89	0.04
potss	249.09	0.00
jiads	62.94	0.05
qofcm	10.67	0.01
wuebp	0.96	0.00
arinadm	0.79	0.01
lgsgi	0.05	0.00
bcnsc	0.01	0.05
qambm	0.00	0.00
mtgfa	0.00	0.00

Arina Data Storage Top Users

In the following graph we plot the users having more data in Arina in the last month. If you appear in this graph, we strongly encourage you to reduce your data in Arina.

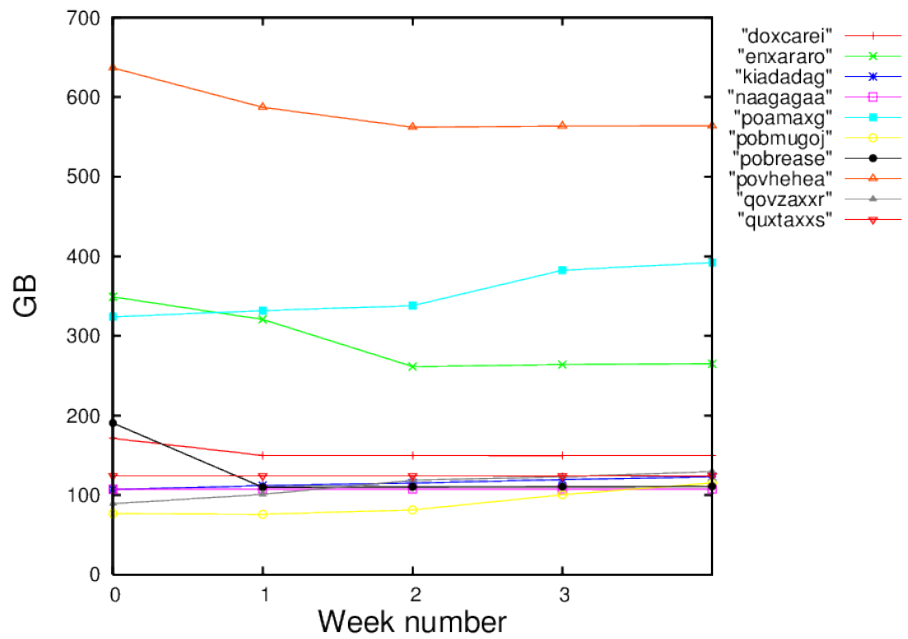


Figure 2: Storage evolution in the last month in GB.