

Estadistics for October/2016

November 1, 2016

Arina

In this brief document we show the usage of arina during October. This month 45435 computing days where used and the the average use of the cluster was 79 %. Since the first of December 570242 computing days where used and the the average use of the Arina cluster was 91 %. The figure shows the usage of Arina along the month. In the first table the usage of each user is shown. The third column indicates all the time each user has used for calculation during this month. The fourth column shows the average time that each job was waiting before the it started running, in days units. In the second table, the same data as in table 1 collected by group is shown.

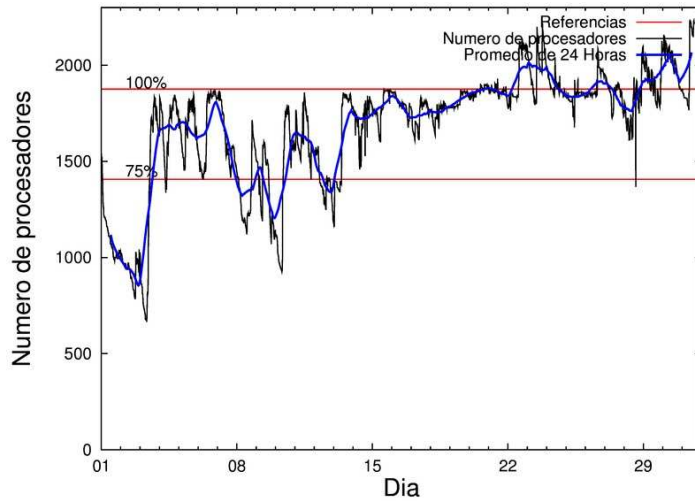


Figure 1: Cluster use. The blue line is a 24 hours average.

Table 1: Calculated time and waiting time in days of the users.

USER	GROUP	Calculated Days	Waiting Time
csazusej	nanogune	8640.86	0.72
bckmimoj	qfjfg	2941.88	0.53
popugurj	pojuu	2626.36	0.23
povhehea	poahh	2350.61	4.95
qfbgoroj	qfjfg	2235.60	0.66
enxararo	egune	1911.79	0.29
povpisim	pomps	1909.07	0.96
pobmabej	potmb	1787.22	0.80
poamaxg	polymat	1741.10	1.73
pobrease	potmb	1633.58	0.49
juranga004	potmb	1523.86	0.49
poalocad	polymat	1356.80	0.18
povrucif	polymat	1283.34	0.70
kiasomal	qocpn	1236.99	0.31
anpgaetk	anjbc	1083.10	0.78
qopgobee	qocpn	1056.77	0.09
faacalea	qfjfg	1045.86	2.72
kixgrazr	potmb	951.29	0.47
enxcacaj	egune	698.86	0.61
fabusgui	qfjfg	662.14	5.72
qoaarecl	qofcm	501.28	0.16
povmieci	pojuu	478.73	0.42
pobgrgrs	pomps	472.36	0.31
poajejec	polymat	432.01	0.19
kiadadag	pojuu	417.41	0.67
qoparaya	qofcm	408.60	0.02
kibderua	qofcm	350.08	0.20
quainbea	qfjfg	325.06	1.34
quxmarur	qfjfg	311.24	3.26
pobfoese	poxlp	280.23	0.68
navdesad	nanopeji	266.77	0.10
wmpetali	wdaga	225.34	0.10
mapalmau	qtftp	205.27	0.20
pobmugoj	pomps	192.93	0.24
quvvalom	qfjfg	191.20	0.94
doxcarei	poemg	164.57	0.51
pobrease	polymat	151.10	0.72
pobcacad	pojuu	147.36	0.23
pmarkaide001	ggmer	118.19	0.26
qobsalae	qambm	117.24	0.14
faaavzae	qfila	114.68	0.03
qfpbaprij	qfila	109.89	0.05
quaurhei	qfjfg	86.46	0.18
ciazuulm	pojuu	80.95	0.37
qoprualg	qofpg	71.18	0.04
qopalpec	qofpg	57.87	0.01
pobmelat	arinadm	52.38	0.00

mapmemam	qtftp	45.42	0.09
qovzaxxr	polymat	40.07	0.17
scpridei	qofcm	36.54	0.05
poplopex	pojoo	34.23	0.26
webogare	arinadm	33.50	0.06
qapceruj	qambm	33.34	0.09
dixsasam	pojoo	29.38	0.00
sckwankm	waars	29.33	0.26
qfbleoni	qfjfg	28.38	1.59
qfpmamoh	qfila	26.79	0.15
qopcomof	qofcm	26.02	0.01
scavinam	poemg	24.93	1.43
kiaurbao	poxlp	14.28	0.03
wubcavaa	wuash	13.31	0.18
ciaarme	pojoo	5.29	0.26
acplaing	jiads	2.71	0.15
kixsasal	pojoo	2.47	1.77
pobromam	pomps	0.72	0.00
paslobej	pajlb	0.59	0.01
quapuoli	qocpn	0.46	0.06
kibguvej	poemg	0.38	0.02
qfbloala	qfjfg	0.36	0.18
quaduree	qfila	0.07	0.01
quxtaxxs	polymat	0.00	0.00
ggpagrom	ggmer	0.00	1.12

Table 2: Calculated time and waiting time in days of the groups.

GROUP	Calculated Days	Waiting Time
nanogune	8640.86	0.72
qfjfg	7828.18	0.85
potmb	5895.95	0.59
polymat	5004.42	0.28
pojuu	3822.18	0.25
egune	2610.65	0.45
pomps	2575.09	0.48
poahh	2350.61	4.95
qocpn	2294.22	0.15
qofcm	1322.52	0.10
anjbc	1083.10	0.78
poxlp	294.51	0.12
nanopeji	266.77	0.10
qfla	251.43	0.06
qtftp	250.69	0.19
wdaga	225.34	0.10
poemg	189.88	1.19
qambm	150.58	0.14
qofpg	129.05	0.03
ggmer	118.19	0.26
arinadm	85.88	0.02
waars	29.33	0.26
wuash	13.31	0.18
jiads	2.71	0.15
pajlb	0.59	0.01

Arina Data Storage Top Users

In the following graph we plot the users having more data in Arina in the last month. If you appear in this graph, we strongly encourage you to reduce your data in Arina.

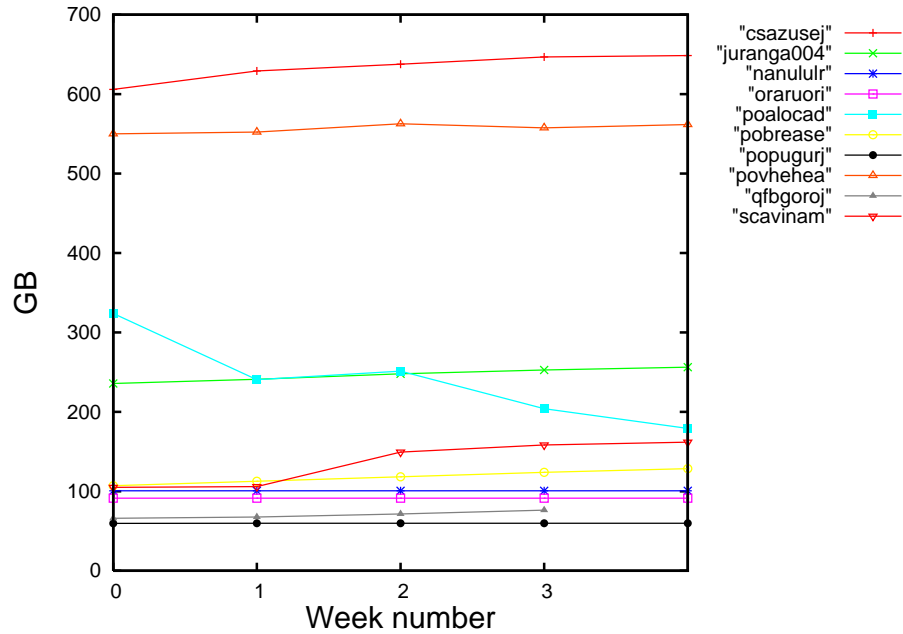


Figure 2: Storage evolution in the last month in GB.