

Estadistics for October/2015

November 2, 2015

Arina

In this brief document we show the usage of arina during October. This month 49473 computing days where used and the the average use of the cluster was 86 %. Since the first of December 522896 computing days where used and the the average use of the Arina cluster was 83 %. The figure shows the usage of Arina along the month. In the first table the usage of each user is shown. The third column indicates all the time each user has used for calculation during this month. The fourth column shows the average time that each job was waiting before the it started running, in days units. In the second table, the same data as in table 1 collected by group is shown.

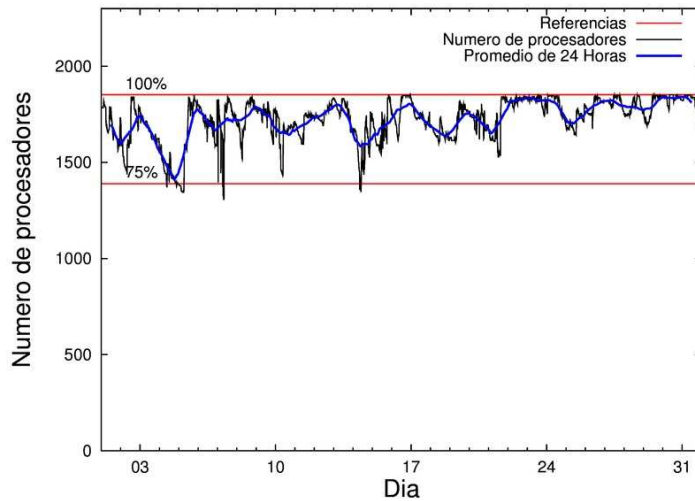


Figure 1: Cluster use. The blue line is a 24 hours average.

Table 1: Calculated time and waiting time in days of the users.

USER	GROUP	Calculated Days	Waiting Time
poamaxg	polymat	10199.02	3.25
povhehea	poahh	7582.03	2.20
fabusgui	qfjfg	4530.67	7.35
poalocad	polymat	4177.50	0.53
qfbgoroj	qfjfg	2762.06	0.31
povrucif	polymat	2745.45	0.45
pobmabej	potmb	1689.62	0.15
kivpepor	kirpp	1669.97	0.51
pobmugoj	pomps	1405.33	0.11
bckmimoj	qfjfg	1290.23	0.23
pobgrgs	pomps	1191.51	0.26
juranga004	potmb	1115.75	0.16
nanululr	nanogune	1101.56	0.91
qopgobee	qocpn	1086.26	0.03
kibderua	qofcm	1050.02	0.03
pobrease	potmb	912.77	1.41
naaalcaa	nanopeji	876.99	0.58
poblairo	poxlp	599.33	0.08
povpisim	pomps	576.73	0.25
pobfoese	poxlp	380.07	0.08
vcposamj	vcnor	339.36	0.67
waxpoxxy	waars	318.53	0.24
kiadadag	pojju	231.00	0.17
pobmelat	arinadm	228.10	0.18
qovzaxxr	polymat	211.84	0.34
dixsasam	pojju	201.53	0.05
qfbmagap	qfila	179.87	0.74
ggpagrom	ggmer	140.55	0.92
ffaatnaa	faraz	114.41	0.06
bixbrdem	gbdga	94.66	0.03
qoprualg	qofpg	83.39	0.03
anpgaetk	anjbc	76.12	0.02
qoparaya	qofcm	69.22	0.04
qobsalae	qambm	68.22	0.00
bcpfimaa	mimam	66.67	0.01
qopcomof	qofcm	60.22	0.05
kiasomal	qocpn	39.42	0.07
qfjbaprj	qfila	39.03	0.00
sckwankm	waars	22.69	0.01
webogare	arinadm	20.12	0.08
mapalmau	qtftp	19.73	0.13
poarloi	pojju	5.15	0.02
poagiaie	pojju	4.59	0.02
qfbloala	qfjfg	4.22	0.03
poairurm	pojju	3.76	0.02
pobromam	pomps	3.01	0.01
kixsasal	pojju	2.70	0.00

csazusej	nanogune	2.23	0.02
qfparsaf	qfjfg	1.79	0.02
paslobej	pajlb	0.82	0.04
inbchcap	injss	0.80	0.00
pobcacad	pojju	0.28	0.09
upetralanda001	wdaga	0.21	0.06
inppebaa	qpjag	0.18	0.18
wabpepaa	waars	0.10	0.00
qobmimuj	lgsgi	0.10	0.00
kiaurbao	poxlp	0.04	0.00
quamearx	qfila	0.00	0.02
qfpmamoh	qfila	0.00	0.00
povraceo	pomps	0.00	0.11

Table 2: Calculated time and waiting time in days of the groups.

GROUP	Calculated Days	Waiting Time
polymat	17333.81	1.22
qfjfg	8588.97	1.68
poahh	7582.03	2.20
potmb	3718.14	0.21
pomps	3176.58	0.20
kirpp	1669.97	0.51
qofcm	1179.46	0.04
qocpn	1125.68	0.04
nanogune	1103.79	0.73
poxlp	979.44	0.08
nanopeji	876.99	0.58
pojju	449.01	0.10
waars	341.33	0.19
vcnor	339.36	0.67
arinadm	248.22	0.15
qfila	218.89	0.44
ggmer	140.55	0.92
faraz	114.41	0.06
gbdga	94.66	0.03
qofpg	83.39	0.03
anjbc	76.12	0.02
qambm	68.22	0.00
mimam	66.67	0.01
qtftp	19.73	0.13
pajlb	0.82	0.04
injss	0.80	0.00
wdaga	0.21	0.06
qpjag	0.18	0.18
lgsgi	0.10	0.00

Arina Data Storage Top Users

In the following graph we plot the users having more data in Arina in the last month. If you appear in this graph, we strongly encourage you to reduce your data in Arina.

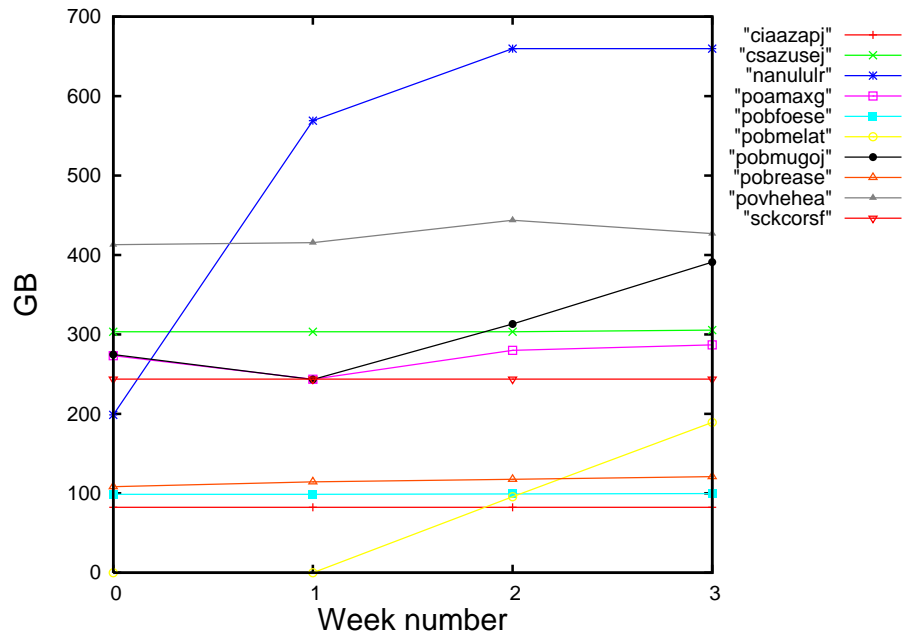


Figure 2: Storage evolution in the last month in GB.

Péndulo

This month computing days where used in **Péndulo** and the the average use of the cluster was %. Since the first of December computing days where used and the the average use of the cluster was %. The figure shows the usage of Péndulo along the month. In the first table the usage of each user is shown. The third column indicates all the time each user has used for calculation during this month. The fourth column shows the average time that each job was waiting before the it started running, in days units. In the second table, the same data as in table 1 collected by group is shown.

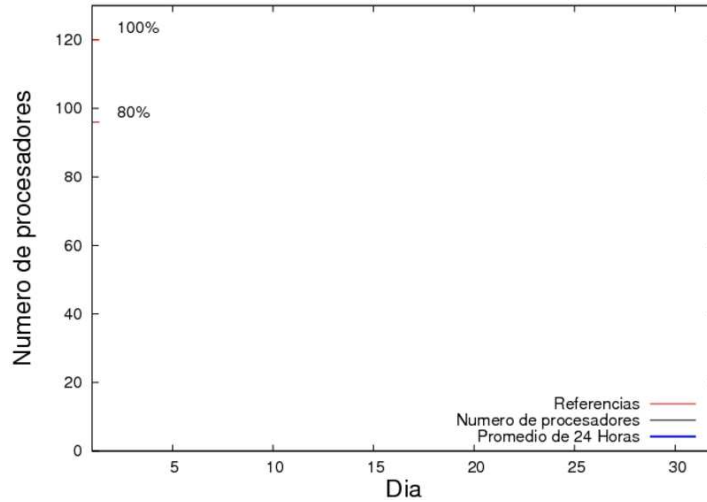


Figure 3: Cluster use. The blue line is a 24 hours average.

Table 3: Calculated time and waiting time in days of the users.

USER	GROUP	Calculated Days	Waiting Time
------	-------	-----------------	--------------

Table 4: Calculated time and waiting time in days of the groups.

GROUP	Calculated Days	Waiting Time
-------	-----------------	--------------