

Estadistics for October/2014

November 1, 2014

Arina

In this brief document we show the usage of arina during October. This month 29334 computing days were used and the the average use of the cluster was 75 %. Since the first of December 387173 computing days were used and the the average use of the Arina cluster was 90 %. The figure shows the usage of Arina along the month. In the first table the usage of each user is shown. The third column indicates all the time each user has used for calculation during this month. The fourth column shows the average time that each job was waiting before the it started running, in days units. In the second table, the same data as in table 1 collected by group is shown.

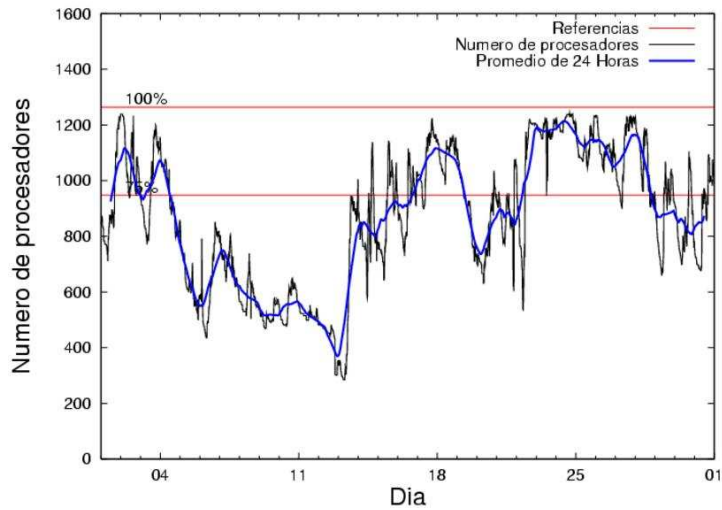


Figure 1: Cluster use. The blue line is a 24 hours average.

Table 1: Calculated time and waiting time in days of the users.

USER	GROUP	Calculated Days	Waiting Time
csazusej	nanogune	6478.67	0.08
sckcorsf	nanogune	4618.26	0.01
povhehea	poahh	2345.46	0.06
povrucif	polymat	1897.42	0.03
pobmabej	potmb	1661.91	0.01
kibderua	qofcm	1592.05	0.01
pobgrgrs	pomps	1288.79	0.04
ciaazapj	poxlp	887.41	0.02
qopgobee	qocpn	859.44	0.01
povwawaj	pojuu	653.69	0.06
fabusgui	qfjfg	641.30	0.03
sckwankm	waars	638.36	0.02
pobmugoj	pomps	624.14	0.01
pobfoese	poxlp	582.37	0.17
qovzaxxr	qorz	523.04	0.01
bckmimoj	qfjfg	491.76	0.02
kixbebej	poxlp	412.96	0.00
kiaolfeb	qocpn	366.63	0.01
qfbgoroj	qfjfg	357.97	0.01
pobrease	potmb	309.18	0.00
juranga004	potmb	280.03	0.01
qobconde	qofcm	259.15	0.01
pobcacad	pojuu	235.14	0.00
poblairo	poxlp	232.39	0.01
pobinini	poxlp	166.89	0.00
povpisim	pomps	157.59	0.00
acplaing	jiads	157.36	0.07
nanululr	nanogune	156.28	0.12
webogare	arinadm	147.01	0.00
qopcomof	qofcm	86.92	0.01
bavfepem	pojuu	66.82	0.01
gbpaljod	gbmng	45.42	0.00
kiasomal	qocpn	33.34	0.01
qfbloala	qfala	18.80	0.00
wuppobam	wuebp	13.19	0.00
bcpfimaa	mimam	12.10	0.00
qfbleoni	qfjfg	9.09	0.03
kixsasal	pojuu	4.70	0.00
naaalcaa	nanopeji	3.37	0.00
qfparsaf	qfjfg	2.90	0.00
kiaurbao	poxlp	2.90	0.00
pobrease	pojuu	2.84	0.00
qfpesmai	qfila	2.34	0.00
pmarkaide001	ggmer	2.24	0.03
quaurhei	qfjfg	2.03	0.09
cixesesb	poxlp	1.64	0.08
mtpmafel	mtgfa	0.30	0.00

pobmelat	arinadm	0.25	0.00
qfxaldad	qflp	0.15	0.00
wabpepaa	waars	0.03	0.00
kibmeheg	pojuu	0.00	0.00
ekpareco	ekclm	0.00	0.00

Table 2: Calculated time and waiting time in days of the groups.

GROUP	Calculated Days	Waiting Time
nanogune	11253.21	0.06
poahh	2345.46	0.06
poxlp	2286.54	0.02
potmb	2251.12	0.01
pomps	2070.52	0.01
qofcm	1938.12	0.01
polymat	1897.42	0.03
qfjfg	1505.06	0.02
qocpn	1259.40	0.01
pojuu	963.19	0.02
waars	638.39	0.02
qorzz	523.04	0.01
jiads	157.36	0.07
arinadm	147.26	0.00
gbmgg	45.42	0.00
qfala	18.80	0.00
wuebp	13.19	0.00
mimam	12.10	0.00
nanopeji	3.37	0.00
qfila	2.34	0.00
ggmer	2.24	0.03
mtgfa	0.30	0.00
qflp	0.15	0.00
ekclm	0.00	0.00

Arina Data Storage Top Users

In the following graph we plot the users having more data in Arina in the last month. If you appear in this graph, we strongly encourage you to reduce your data in Arina.

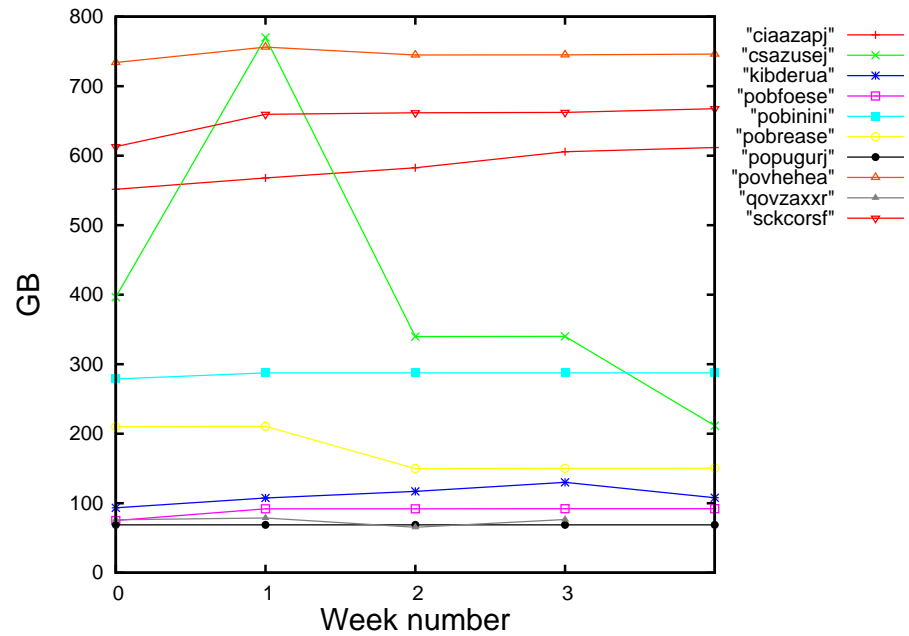


Figure 2: Storage evolution in the last month in GB.

Péndulo

This month 209 computing days were used in **Péndulo** and the the average use of the cluster was 10 %. Since the first of December 5639 computing days were used and the the average use of the cluster was 20 %. The figure shows the usage of Péndulo along the month. In the first table the usage of each user is shown. The third column indicates all the time each user has used for calculation during this month. The fourth column shows the average time that each job was waiting before the it started running, in days units. In the second table, the same data as in table 1 collected by group is shown.

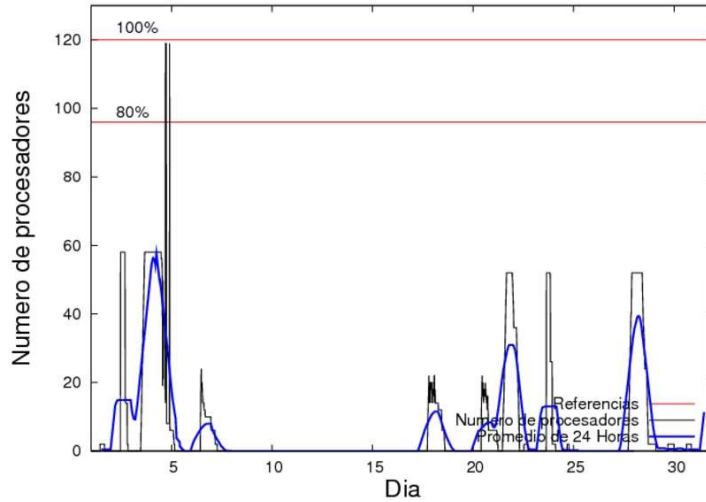


Figure 3: Cluster use. The blue line is a 24 hours average.

Table 3: Calculated time and waiting time in days of the users.

USER	GROUP	Calculated Days	Waiting Time
qovzaxxr	qofcm	208.50	0.06

Table 4: Calculated time and waiting time in days of the groups.

GROUP	Calculated Days	Waiting Time
qofcm	208.50	0.06