

# Estadistics for October/2013

November 7, 2013

## Arina

In this brief document we show the usage of arina during October. This month 37039 computing days where used and the the average use of the cluster was 91 %. Since the first of December 370047 computing days where used and the the average use of the Arina cluster was 82 %. The figure shows the usage of Arina along the month. In the first table the usage of each user is shown. The third column indicates all the time each user has used for calculation during this month. The fourth column shows the average time that each job was waiting before the it started running, in days units. In the second table, the same data as in table 1 collected by group is shown.

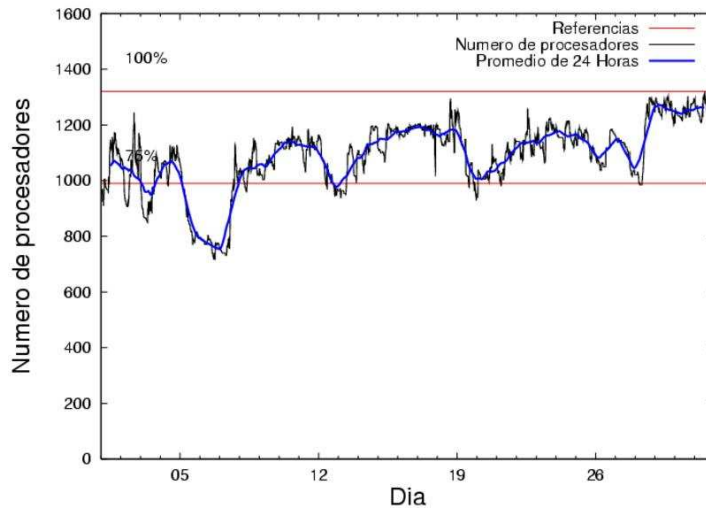


Figure 1: Cluster use. The blue line is a 24 hours average.

Table 1: Calculated time and waiting time in days of the users.

USER	GROUP	Calculated Days	Waiting Time
povhehea	poahh	15746.42	0.39
sckcorsf	nanogune	3262.88	0.61
pobmugoj	pojoo	2659.86	0.19
scpzuola	qorzz	2398.68	0.47
povrucif	polymat	2070.15	0.14
ciaazapj	poxlp	1248.83	0.08
fabusgui	qfjfg	945.18	0.21
kibderua	qofcm	842.29	0.08
pobrease	potss	828.79	0.07
favecvep	qfjfg	755.03	0.24
popugurj	pojoo	706.86	0.53
bckmimoj	qfjfg	663.74	0.20
qoaarecl	qofcm	649.88	0.09
csazusej	nanogune	582.15	0.06
poplopex	pojoo	545.79	0.12
qopgobee	qocpn	454.84	0.08
sgkluqun	pojoo	432.28	0.23
qoparaya	qofcm	357.91	0.16
qfploarf	qfila	253.06	0.14
pobcacad	pojoo	241.04	0.59
mapalmau	qtftp	187.32	0.23
pobinini	pojoo	181.62	0.04
qobconde	qofcm	170.11	0.12
qoprualg	qofpg	147.14	0.02
gaazareg	injss	127.46	0.18
bixcobum	gbdga	118.69	0.23
quxlegoa	qfjfg	96.58	0.16
poalolog	poxlp	76.79	0.03
pobrease	pojoo	56.86	0.80
ekpvbaa	ekjgm	45.80	0.27
kixsasal	pojoo	36.70	0.12
quaduree	qfila	31.31	0.30
bavfepem	pojoo	20.67	0.07
pobmelat	arinadm	17.01	0.05
pobgrgrs	pojoo	15.35	0.04
qfpbaprj	qfila	9.06	0.01
eavmaloj	eaizo	8.20	0.06
upetralanda001	wdaga	8.00	0.00
qfbleoni	qfjfg	7.00	0.19
favcopee	qfjfg	6.55	0.16
baxakake	poxlp	5.73	0.03
ggplaarj	ggmer	3.53	0.51
qovzaxxr	qorzz	3.19	0.01
baxrarat	baeaa	3.13	0.08
cixesesb	poxlp	3.04	0.05
povpisim	pomps	2.68	0.03
juranga004	potmb	2.09	0.03

qfpesmai	qfila	1.04	0.00
wuppobam	wuebp	0.31	0.03
pobmabej	pojoo	0.18	0.01
baxrarat	poxlp	0.13	0.05
webogare	arinadm	0.01	0.00
sckwankm	waars	0.00	0.00
inpfegau	injss	0.00	0.00

Table 2: Calculated time and waiting time in days of the groups.

GROUP	Calculated Days	Waiting Time
poahh	15746.42	0.39
pojoo	4897.20	0.15
nanogune	3845.03	0.14
qfjfg	2474.08	0.20
qorz	2401.87	0.06
polymat	2070.15	0.14
qofcm	2020.18	0.10
poxlp	1334.52	0.04
potss	828.79	0.07
qocpn	454.84	0.08
qfila	294.47	0.08
qtftp	187.32	0.23
qofpg	147.14	0.02
injss	127.46	0.17
gbdga	118.69	0.23
ekjgm	45.80	0.27
arinadm	17.02	0.04
eaizo	8.20	0.06
wdaga	8.00	0.00
ggmer	3.53	0.51
baeaa	3.13	0.08
pomps	2.68	0.03
potmb	2.09	0.03
wuebp	0.31	0.03
waars	0.00	0.00

## Arina Data Storage Top Users

In the following graph we plot the users having more data in Arina in the last month. If you appear in this graph, we strongly encourage you to reduce your data in Arina.

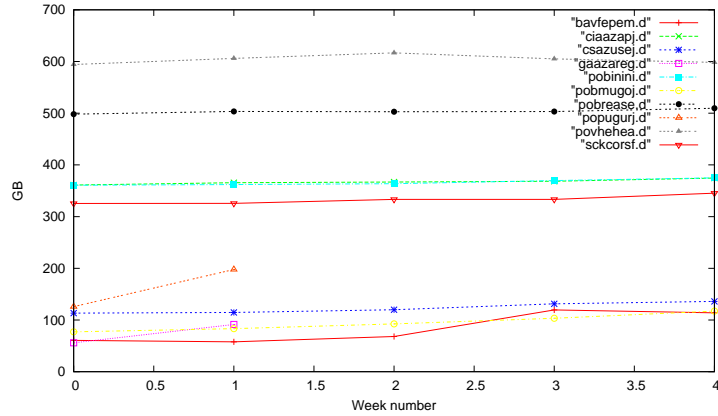


Figure 2: Storage evolution in the last month (in GB).

## Péndulo

This month 1505 computing days were used in **Péndulo** and the the average use of the cluster was 5 %. Since the first of December computing days were used and the the average use of the cluster was %. The figure shows the usage of Péndulo along the month. In the first table the usage of each user is shown. The third column indicates all the time each user has used for calculation during this month. The fourth column shows the average time that each job was waiting before the it started running, in days units. In the second table, the same data as in table 1 collected by group is shown.

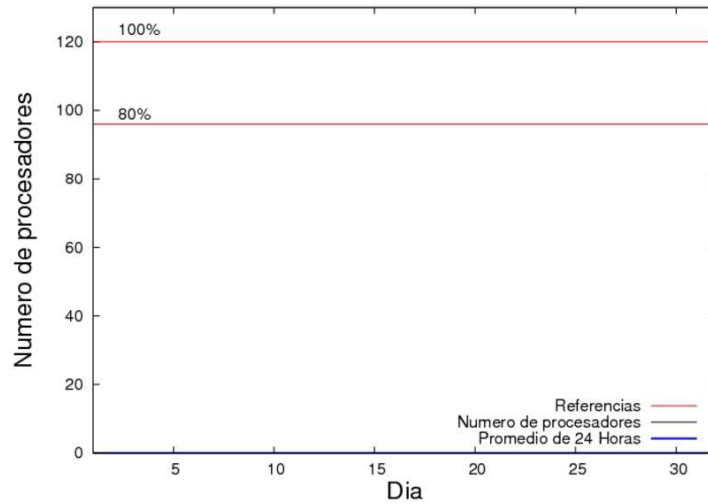


Figure 3: Cluster use. The blue line is a 24 hours average.

Table 3: Calculated time and waiting time in days of the users.

USER	GROUP	Calculated Days	Waiting Time
------	-------	-----------------	--------------

Table 4: Calculated time and waiting time in days of the groups.

GROUP	Calculated Days	Waiting Time
-------	-----------------	--------------