

# Estadistics for October/2012

November 6, 2012

## Arina

In this brief document we show the usage of arina during October. This month 41802 computing days where used and the the average use of the cluster was 96 %. Since the first of December 356280 computing days where used and the the average use of the Arina cluster was 77 %. The figure shows the usage of Arina along the month. In the first table the usage of each user is shown. The third column indicates all the time each user has used for calculation during this month. The fourth column shows the average time that each job was waiting before the it started running, in days units. In the second table, the same data as in table 1 collected by group is shown.

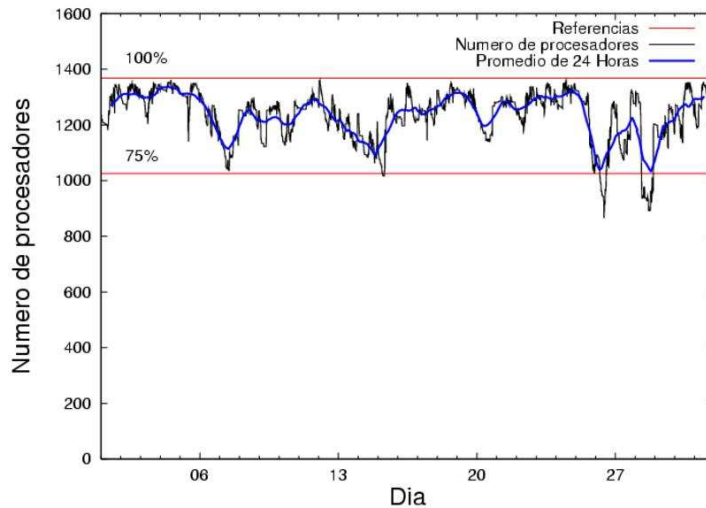


Figure 1: Cluster use. The blue line is a 24 hours average.

Table 1: Calculated time and waiting time in days of the users.

USER	GROUP	Calculated Days	Waiting Time
sckcorsf	nanogune	14486.57	1.09
povhehea	poahh	4696.24	0.40
bcklogoi	inffi	2880.38	1.33
csazusej	nanogune	2833.53	0.56
nabzezem	nanogune	2242.10	0.90
favcopee	qfjfg	1881.26	1.63
wmbgavem	waets	1604.80	0.28
pobrease	potss	1572.21	0.18
qoaarecl	qofcm	1049.26	0.13
pobmugoj	pojju	956.52	0.17
kibpapaa	qorz	941.82	3.82
ciaazapj	poxlp	640.16	0.31
qobconde	qofcm	524.12	0.13
popugurj	pojju	519.84	0.08
povwawaj	pojju	465.11	0.40
etpdihei	etjfm	457.75	0.16
juranga004	potmb	396.81	0.03
povrucif	poxlp	390.63	0.22
qopgobee	qocpn	376.30	0.09
kibderua	qofcm	321.10	0.08
kibmeheg	pojju	318.50	0.23
bckmimoj	qfjfg	306.54	0.14
wabpepaa	waars	260.15	0.14
qfploarf	qfila	208.55	0.03
pobrease	pojju	207.99	0.48
qopcomof	qofcm	132.88	0.04
pobmabej	pojju	132.24	0.01
pobgrgrs	pojju	114.65	0.05
cixesesb	poxlp	99.20	0.12
webogare	arinadm	89.12	0.07
meppesag	qtftp	87.59	0.08
qoparaya	qofcm	76.15	0.11
pobmelat	arinadm	69.09	0.00
qfpmamoh	qfila	63.75	0.21
poblair	poxlp	58.11	0.06
kixsasal	pojju	55.48	0.19
qovzaxxr	qorz	53.46	0.13
poalolog	poxlp	53.06	0.09
qoprualg	qofpg	42.11	0.02
qfpesmai	qfila	32.81	0.00
poplopex	pojju	28.91	0.02
bcpitaia	bcizb	26.39	0.01
iapgarue	iaegr	24.78	0.00
bcpremae	bcdbu	15.57	0.00
qfpbaprij	qfila	3.95	0.09
quxbabai	qfjfg	3.47	0.01
wuppobam	wuebp	1.20	0.05

bcpmeale	qffbe	0.59	0.00
inpballj	injbi	0.15	0.00
pobinini	pojjuu	0.00	0.00

Table 2: Calculated time and waiting time in days of the groups.

GROUP	Calculated Days	Waiting Time
nanogune	19562.20	0.87
poahh	4696.24	0.40
infl	2880.38	1.33
pojjuu	2799.25	0.21
qffg	2191.27	0.29
qofcm	2103.52	0.10
waets	1604.80	0.28
potss	1572.21	0.18
poxlp	1241.15	0.20
qorzz	995.28	2.76
etjfm	457.75	0.16
potmb	396.81	0.03
qocpn	376.30	0.09
qfila	309.06	0.06
waars	260.15	0.14
arinadm	158.21	0.06
qtftp	87.59	0.08
qofpg	42.11	0.02
bcizb	26.39	0.01
iaegr	24.78	0.00
bcdbu	15.57	0.00
wuebp	1.20	0.05
qffbe	0.59	0.00
injbi	0.15	0.00

## Pendolo

This month 206 computing days were used in **Pendolo** and the the average use of the cluster was 9 %. Since the first of December 1849 computing days were used and the the average use of the cluster was 7 %. The figure shows the usage of Pendolo along the month. In the first table the usage of each user is shown. The third column indicates all the time each user has used for calculation during this month. The fourth column shows the average time that each job was waiting before the it started running, in days units. In the second table, the same data as in table 1 collected by group is shown.

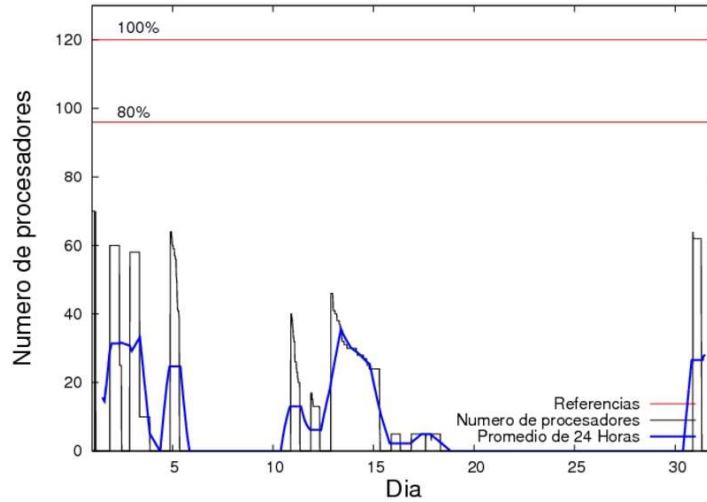


Figure 2: Cluster use. The blue line is a 24 hours average.

Table 3: Calculated time and waiting time in days of the users.

USER	GROUP	Calculated Days	Waiting Time
jtpanlod	jtjob	206.25	1.19

Table 4: Calculated time and waiting time in days of the groups.

GROUP	Calculated Days	Waiting Time
jtjob	206.25	1.19

## Ikerbasque machine

The service has access to 208 xeon cores in this machine, which are older than Arina's ones. The codes of only few big users are maintained there to optimize the maintenance time. This month 12179 computing days were used in **Ikerbasque** machine and the the average use of the cluster was 189 %. Since the first of December 55381 computing days were used and the the average use of the cluster was 79 %. In the first table the usage of each user is shown. The third column indicates all the time each user has used for calculation during this month. The fourth column shows the average time that each job was waiting before the it started running, in days units. In the second table, the same data as in table 1 collected by group is shown.

Table 5: Calculated time and waiting time in days of the users.

USER	GROUP	Calculated Days	Waiting Time
scpzuola	qorzz	2187.09	0.00
kibpapa	qorzz	8118.36	0.00
pobmugoj	pojuu	1873.61	0.00

Table 6: Calculated time and waiting time in days of the groups.

GROUP	Calculated Days	Waiting Time
qorzz	20297.2	0.00
pojuu	1873.61	0.00