

Estadistics for October/2011

November 2, 2011

Arina

In this brief document we show the usage of arina during October. This month 17853 computing days were used and the average use of the cluster was 77 %. Since the first of December 191710 computing days were used and the average use of the cluster was 76 %. The figure shows the usage of Arina along the month. In the first table the usage of each user is shown. The third column indicates all the time each user has used for calculation during this month. The fourth column shows the average time that each job was waiting before it started running, in days units. In the second table, the same data as in table 1 collected by group is shown.

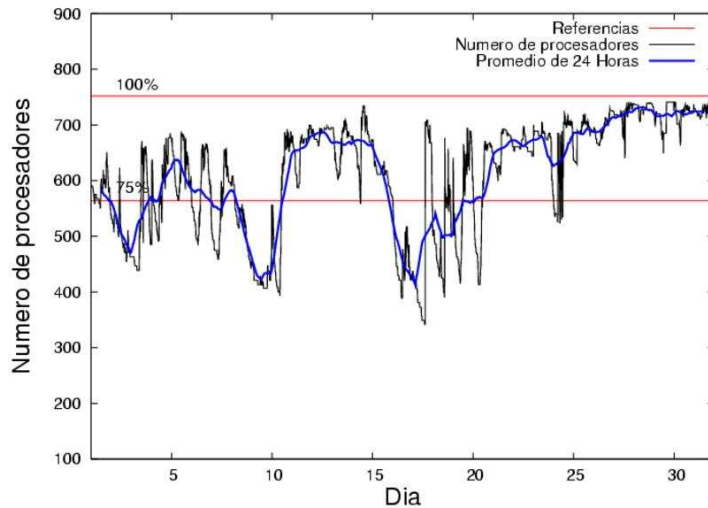


Figure 1: Cluster use. The blue line is a 24 hours average.

Table 1: Calculated time and waiting time in days of the users.

USER	GROUP	Calculated Days	Waiting Time
povhehea	poahh	3354.54	0.33
scpfralm	qorzz	2586.65	0.20
pobmugoj	pojoo	1061.81	0.04
wabeslel	waars	1041.85	0.05
scpzuola	qorzz	1028.55	0.75
ciaazapj	poxlp	919.97	0.08
wmbgavem	waets	667.69	0.23
quxlegoa	qfjfg	643.30	0.73
popugurj	pojoo	616.99	0.23
kibmeheg	pojoo	478.40	0.06
qopgobee	qocpn	458.49	0.03
pobmelat	arinadm	437.77	0.00
bcpcacaa	mimam	424.30	0.15
kibderua	qofcm	420.57	0.05
pobrease	pojoo	408.80	0.26
favcopee	qfjfg	385.49	0.24
pobgrgrs	pojoo	375.11	0.06
qfbleoni	qfjfg	303.92	0.48
qobconde	qofcm	288.44	0.26
cixesesb	poxlp	264.96	0.12
povrucif	poxlp	206.76	0.05
favecvcp	qfjfg	198.23	0.93
qoaarecl	qofcm	168.52	0.03
qoparaya	qofcm	152.68	0.12
waxpooxy	waars	149.16	0.04
poxmafie	pojoo	126.61	0.45
poblairo	poxlp	109.21	0.08
povwawaj	pojoo	109.02	0.29
bcpremae	bcdbu	81.68	0.03
wabpepaa	waars	71.34	0.13
pobrease	potss	68.24	0.32
kivremey	qpjag	61.03	0.12
qfpfegoj	qfjfg	40.52	0.00
bckmimoj	qfjfg	32.28	0.02
acblonou	ccjla	29.90	0.27
waptctce	waets	18.28	0.14
pobmabej	pojoo	16.03	0.00
sckwankm	waars	13.36	0.01
pobinini	pojoo	8.32	0.04
kixmagre	poxlp	7.65	0.02
webzucaa	wenzu	5.00	0.00
qopcomof	qofcm	3.25	0.03
qovzaxxr	qorzz	2.39	0.04
quxbabai	qfjfg	1.95	0.04
bcpitaia	bcizb	1.13	0.00
mapalmau	magps	1.08	0.03
qoprualg	qofpg	1.04	0.11

gbbsaeur	gbdga	0.40	0.04
meppesag	qtftp	0.29	0.04
webogare	arinadm	0.16	0.00
qfbbaprj	qfila	0.11	0.00
bcpmamza	qfjvv	0.09	0.02
poplopex	pojju	0.03	0.00
wapgoesj	wakgg	0.00	0.20
povpisim	pomps	0.00	0.00
mapmemam	qtftp	0.00	0.04

Table 2: Calculated time and waiting time in days of the groups.

GROUP	Calculated Days	Waiting Time
qorzz	3617.59	0.29
poahh	3354.54	0.33
pojju	3201.12	0.15
qfjfg	1605.68	0.50
poxlp	1508.55	0.07
waars	1275.71	0.05
qofcm	1033.45	0.09
waets	685.97	0.21
qocpn	458.49	0.03
arinadm	437.93	0.00
mimam	424.30	0.15
bcdbu	81.68	0.03
potss	68.24	0.32
qpjag	61.03	0.12
ccjla	29.90	0.27
wenzu	5.00	0.00
bcizb	1.13	0.00
magps	1.08	0.03
qofpg	1.04	0.11
gbdga	0.40	0.04
qtftp	0.29	0.04
qfila	0.11	0.00
qfjvv	0.09	0.02
wakgg	0.00	0.20
pomps	0.00	0.00

Pendolo

This month 3634 computing days were used in **Pendolo** and the the average use of the cluster was 13 %. Since the first of December computing days were used and the the average use of the cluster was %. The figure shows the usage of Pendolo along the month. In the first table the usage of each user is shown. The third column indicates all the time each user has used for calculation during this month. The fourth column shows the average time that each job was waiting before the it started running, in days units. In the second table, the same data as in table 1 collected by group is shown.

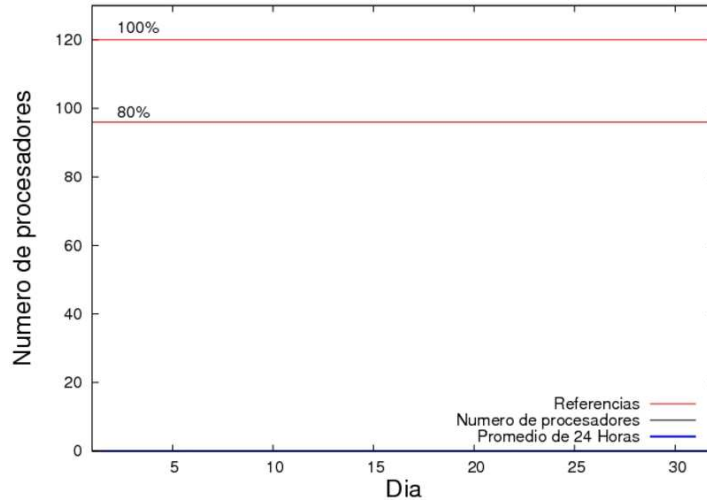


Figure 2: Cluster use. The blue line is a 24 hours average.

Table 3: Calculated time and waiting time in days of the users.

USER	GROUP	Calculated Days	Waiting Time
------	-------	-----------------	--------------

Table 4: Calculated time and waiting time in days of the groups.

GROUP	Calculated Days	Waiting Time
-------	-----------------	--------------

Ikerbasque machine

The service has access to 206 xeon cores in this machine, which are older than Arina's ones. The codes of only few big users are maintained there to optimize the maintenance time. This month 3715 computing days were used in **Ikerbasque** machine and the the average use of the cluster was 58 %. Since the first of June 16629 computing days were used and the the average use of the cluster was 53 %. In the first table the usage of each user is shown. The third column indicates all the time each user has used for calculation during this month. The fourth column shows the average time that each job was waiting before the it started running, in days units. In the second table, the same data as in table 1 collected by group is shown.

Table 5: Calculated time and waiting time in days of the users.

USER	GROUP	Calculated Days	Waiting Time
scpzuola	qorzz	1773.46	1.22
pobmugoj	pojoo	1488.89	1.12
pobmelat	arinadm	400.12	0.04
povhehea	pojoo	52.63	0.98

Table 6: Calculated time and waiting time in days of the groups.

GROUP	Calculated Days	Waiting Time
qorzz	1773.46	1.22
pojoo	1541.52	1.10
arinadm	400.12	0.04