

# Estadistics for September/2019

October 1, 2019

## Arina

In this brief document we show the usage of arina during September. This month 87566 computing days were used and the average use of the cluster was 78 %. Since the first of December 897822 computing days were used and the average use of the Arina cluster was 79 %. The figure shows the usage of Arina along the month. In the first table the usage of each user is shown. The third column indicates all the time each user has used for calculation during this month. The fourth column shows the average time that each job was waiting before it started running, in days units. In the second table, the same data as in table 1 collected by group is shown.

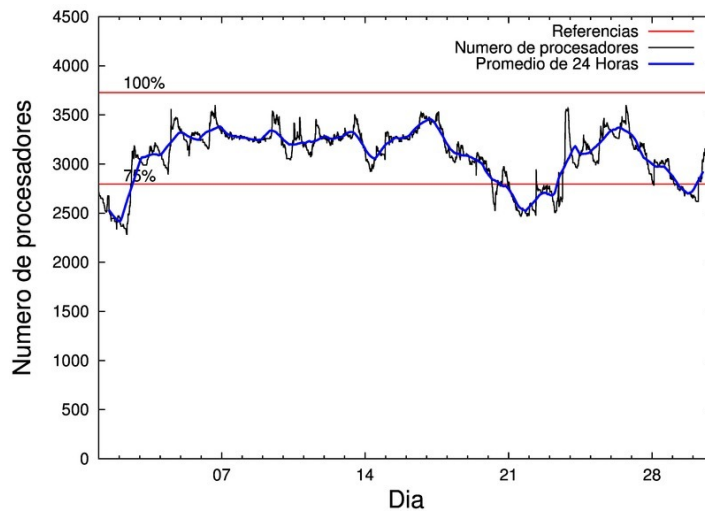


Figure 1: Cluster use. The blue line is a 24 hours average.

Table 1: Calculated time and waiting time in days of the users.

USER	GROUP	Calculated Days	Waiting Time
povhehea	poahh	15995.06	0.72
qovzaxxr	polymat	11202.60	0.26
enxararo	egune	7041.66	3.08
poairurm	polymat	6551.79	0.08
scavinam	poemg	6415.89	0.26
qfpmamoh	qfila	5361.58	0.03
povwawaj	pojoo	5353.43	0.55
qubhohol	qocpn	3099.02	0.07
quxtaxxs	polymat	2806.23	0.16
poamaxg	polymat	2778.26	0.04
sckahnom	potmb	2293.94	0.40
povpisim	pomps	2183.35	0.16
kixmagre	poemg	1482.12	0.71
enbxilij	egune	1407.94	0.60
faacalea	qfjfg	1025.25	0.02
scpridei	qofcm	1019.60	0.00
naplodud	nanogune	950.50	0.02
pobtxe01	poxlp	891.76	0.03
poarloi	pojoo	837.10	0.21
kibderua	qoabl	813.35	0.00
povrucif	polymat	679.24	0.01
povmieci	pojoo	678.83	0.12
bcpliolj	bgjbp	644.48	3.60
pobladej	poxlp	617.93	0.02
pobfoese	poxlp	579.92	0.03
csazusej	nanogune	552.36	0.28
qobcacea	qocpn	518.04	0.00
quxmarur	qfjfg	438.86	0.59
doxcarei	poemg	411.80	2.01
quainbea	qfjfg	329.75	0.02
kiasomal	qocpn	305.49	0.00
qobpamap	qocpn	281.30	0.01
poanacuj	polymat	260.29	0.06
poaurura	poxlp	215.49	0.00
popugurj	pojoo	200.03	0.18
qfbalale	qfjfg	183.07	0.02
poaugbia	pojoo	156.33	0.01
povracoe	pomps	132.28	2.91
enbropes	egune	125.27	0.06
pobmelat	arinadm	111.36	0.00
pobtmb01	potmb	102.72	0.01
qfpesmai	qfila	89.03	0.00
quamearx	qfila	65.00	0.00
qopgobee	qocpn	59.97	0.00
poaazago	potmb	51.83	0.00
pobmabej	potmb	48.74	0.00
kiaolfeb	potss	47.18	0.04

bcpremae	bcdbu	33.69	0.00
ciazuulm	pojuu	32.67	0.11
qopcomof	qofcm	19.39	0.00
ikasle03	pomaster	17.60	0.00
pobdadae	poxlp	16.11	0.02
qoprualg	qofpg	12.33	0.00
qfpbaprij	qfila	11.67	0.00
ciaalece	pojuu	10.00	0.00
enxcacaj	egune	6.60	0.58
pobrease	potmb	4.53	0.00
poagafrm	pojuu	2.27	0.00
bgpjiajd	bgjbp	0.85	0.34
kixsasal	pojuu	0.84	0.00
biadecum	bicgm	0.14	0.00
popporiv	poxlp	0.05	0.00
wmpetali	wdaga	0.00	0.00
pobera01	poxlp	0.00	0.00
oibargia	oijgc	0.00	0.00
oibaclaa	oijgc	0.00	0.03
dibxuxux	poxlp	0.00	0.00

---

Table 2: Calculated time and waiting time in days of the groups.

GROUP	Calculated Days	Waiting Time
polymat	24278.41	0.10
poahh	15995.06	0.72
egune	8581.47	2.52
poemg	8309.81	0.63
pojoo	7271.50	0.26
qfila	5527.27	0.02
qocpn	4263.82	0.02
potmb	2501.76	0.23
poxlp	2321.26	0.03
pomps	2315.63	0.21
qjfg	1976.93	0.04
nanogune	1502.86	0.15
qofcm	1038.99	0.00
qoabl	813.35	0.00
bgjbp	645.33	2.95
arinadm	111.36	0.00
potss	47.18	0.04
bcdbu	33.69	0.00
pomaster	17.60	0.00
qofpg	12.33	0.00
bicgm	0.14	0.00
wdaga	0.00	0.00
oijgc	0.00	0.02

## Arina Data Storage Top Users

In the following graph we plot the users having more data in Arina in the last month. If you appear in this graph, we strongly encourage you to reduce your data in Arina.

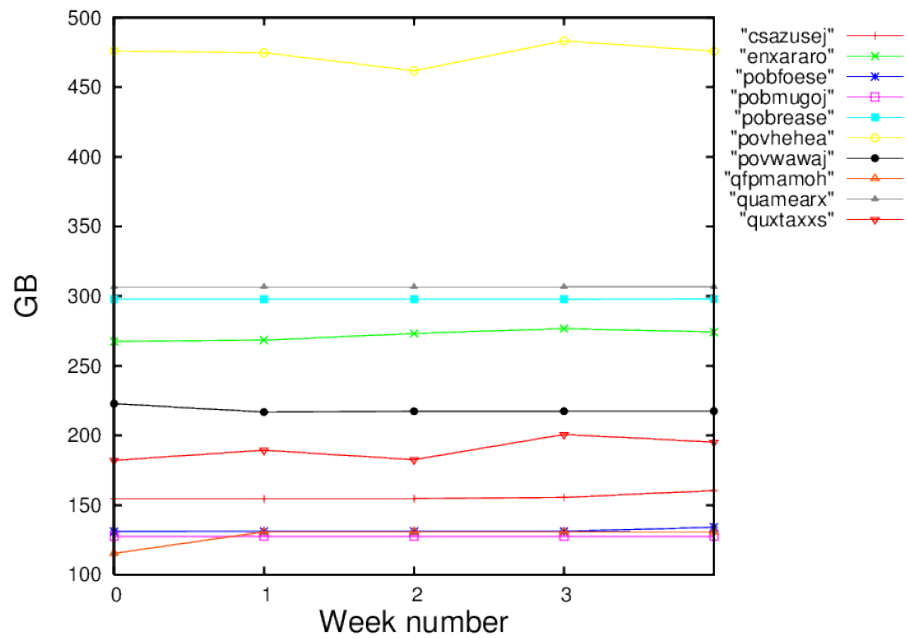


Figure 2: Storage evolution in the last month in GB.