

# Estadistics for September/2018

October 1, 2018

## Arina

In this brief document we show the usage of arina during September. This month 73305 computing days were used and the average use of the cluster was 66 %. Since the first of December 877549 computing days were used and the average use of the Arina cluster was 77 %. The figure shows the usage of Arina along the month. In the first table the usage of each user is shown. The third column indicates all the time each user has used for calculation during this month. The fourth column shows the average time that each job was waiting before it started running, in days units. In the second table, the same data as in table 1 collected by group is shown.

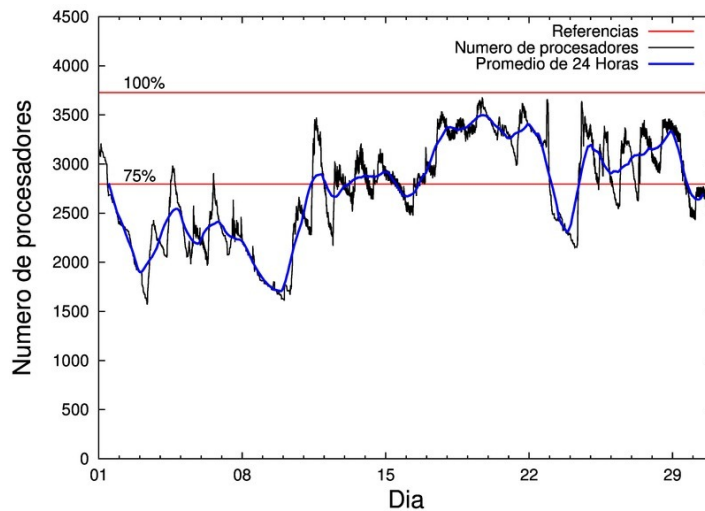


Figure 1: Cluster use. The blue line is a 24 hours average.

Table 1: Calculated time and waiting time in days of the users.

USER	GROUP	Calculated Days	Waiting Time
qovzaxxr	polymat	13713.39	0.11
povhehea	poahh	9618.74	0.30
povrucif	polymat	7264.64	0.01
pobluluv	poxlp	4056.70	0.34
popugurj	pojoo	3374.66	0.81
povwawaj	pojoo	3284.49	0.08
poblauro	poxlp	2909.78	0.03
sckahnom	potmb	2811.20	0.02
poaugbia	pojoo	2702.75	0.06
enxararo	egune	2666.54	0.28
csazusej	nanogune	2162.94	0.00
pobrease	potmb	1763.00	0.00
kiadadag	pojoo	1532.95	0.00
pobmugoj	pomps	1489.40	0.00
wabgaari	waaap	1112.23	0.05
fabusgui	qfjfg	1098.62	0.00
pobmabej	potmb	1059.51	0.00
pobgrgrs	pomps	971.57	0.00
poajejec	polymat	832.41	0.00
quxmarur	qfjfg	830.01	1.78
kibderua	qofcm	789.01	0.00
enbxilij	egune	785.82	0.29
quamearx	qfila	726.99	0.00
poarloi	pojoo	620.16	0.03
pobladej	poxlp	618.41	0.00
qoapefuh	qocpn	598.39	0.00
quxlegoa	qfjfg	519.35	0.18
poaganau	polymat	459.81	0.01
pobfoese	poxlp	452.84	0.00
qobzazag	qocpn	406.61	0.00
qopcomof	qofcm	291.66	0.00
qobpamap	qocpn	230.62	0.00
qfpmamoh	qfila	186.55	0.04
favecvep	qfjfg	141.83	0.00
poagafrm	pojoo	137.57	0.01
scavinam	poemg	131.84	0.00
quainbea	qfjfg	120.83	0.01
ciaansap	pojoo	120.49	0.00
qopgobee	qocpn	115.10	0.00
kiasomal	qocpn	110.74	0.00
qfbleoni	qfjfg	79.12	0.00
webogare	arinadm	76.20	0.00
poanacuj	polymat	64.30	0.01
kixgrazr	potmb	64.05	0.01
qfjbapri	qfila	58.61	0.01
poazago	potmb	47.17	0.00
faacalea	qfjfg	22.46	0.47

quxtaxxs	polymat	19.90	0.00
qfpesmai	qfila	9.75	0.01
qoprualg	qofpg	8.46	0.00
doxcarei	poemg	7.25	0.00
popporiv	poxlp	6.73	0.01
naplodud	nanogune	5.50	0.01
bgpmuhoi	bcnsc	3.85	0.03
poamaxg	polymat	3.24	0.00
poplopex	pojju	1.75	0.00
kixsasal	pojju	1.70	0.00
poairurm	polymat	1.58	0.00
bixbrdem	gbdga	1.56	0.00
wuppobam	wuebp	1.53	0.00
qfbloala	qfjfg	0.45	0.00
kiaolfeb	potss	0.42	0.00
ciazuulm	pojju	0.19	0.00
kiaurbao	poxlp	0.09	0.00
poarugua	pojju	0.00	0.00

Table 2: Calculated time and waiting time in days of the groups.

GROUP	Calculated Days	Waiting Time
polymat	22359.27	0.02
pojju	11776.71	0.04
poahh	9618.74	0.30
poxlp	8044.55	0.10
potmb	5744.94	0.01
egune	3452.36	0.28
qfjfg	2812.68	0.06
pomps	2460.97	0.00
nanogune	2168.45	0.00
qocpn	1461.47	0.00
waaap	1112.23	0.05
qofcm	1080.67	0.00
qfila	981.90	0.00
poemg	139.09	0.00
arinadm	76.20	0.00
qofpg	8.46	0.00
bcnsc	3.85	0.03
gbdga	1.56	0.00
wuebp	1.53	0.00
potss	0.42	0.00

## Arina Data Storage Top Users

In the following graph we plot the users having more data in Arina in the last month. If you appear in this graph, we strongly encourage you to reduce your data in Arina.

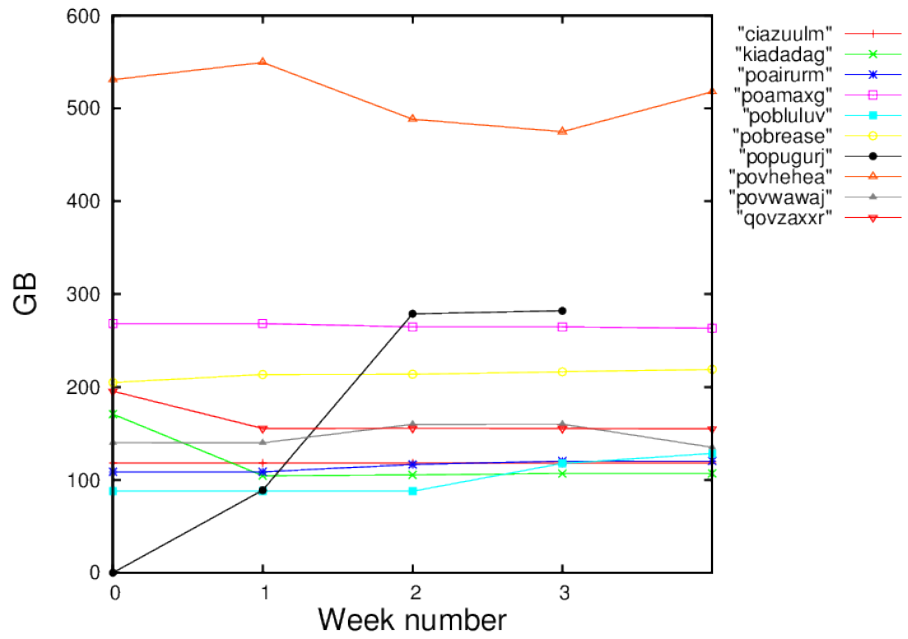


Figure 2: Storage evolution in the last month in GB.