

# Estadistics for September/2017

October 1, 2017

## Arina

In this brief document we show the usage of arina during September. This month 62222 computing days were used and the average use of the cluster was 56 %. Since the first of December 574948 computing days were used and the average use of the Arina cluster was 73 %. The figure shows the usage of Arina along the month. In the first table the usage of each user is shown. The third column indicates all the time each user has used for calculation during this month. The fourth column shows the average time that each job was waiting before it started running, in days units. In the second table, the same data as in table 1 collected by group is shown.

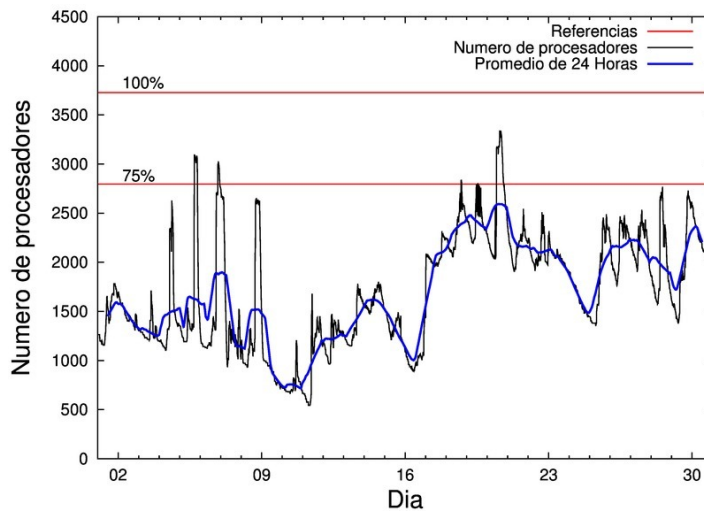


Figure 1: Cluster use. The blue line is a 24 hours average.

Table 1: Calculated time and waiting time in days of the users.

USER	GROUP	Calculated Days	Waiting Time
povhehea	poahh	9420.95	0.14
povrucif	polymat	7157.31	0.00
fabusgui	qfjfg	6909.04	0.32
pobmugoj	pomps	5809.24	0.00
poamaxg	polymat	4920.05	0.02
poajejec	polymat	4401.40	0.00
kiadadag	pojoo	3870.59	0.32
poanacuj	polymat	3630.29	0.00
quainbea	qfjfg	2812.40	0.06
poblauro	poxlp	1681.03	0.00
qovzaxxr	polymat	1668.93	0.00
pobgrgrs	pomps	1399.15	0.04
kiasomal	qocpn	1390.88	0.00
quxmarur	qfjfg	1316.90	0.01
enxararo	egune	800.54	0.01
enxcacaj	egune	789.38	0.00
dixsasam	pojoo	584.73	0.09
poalocad	polymat	548.92	0.00
qoaarecl	qofcm	547.39	0.34
qopgobee	qocpn	376.28	0.00
favecvep	qfjfg	284.47	0.00
ciairaim	poxlp	244.40	0.00
faavzae	qfila	223.21	0.00
cixesgos	pojoo	196.79	0.00
quaduree	qfila	141.44	0.00
naaruore	nanogune	118.53	0.01
bgpmafea	bgjal	114.36	0.00
faaatnaa	faraz	110.54	0.00
quamearx	qfila	100.43	0.00
deaguura	nmage	97.66	0.14
qfbleoni	qfjfg	74.79	0.00
kiaurbao	poxlp	72.92	0.00
quaurhei	qfjfg	61.07	0.00
pobrease	potmb	57.15	0.00
poadoodj	potmb	51.45	0.00
quaasanm	qfjfg	41.45	0.00
ciazuulm	pojoo	35.83	0.00
jipiloga	jiads	24.35	0.23
qopcomof	qofcm	24.01	0.00
pobmabej	potmb	23.31	0.00
scavinam	poemg	19.23	0.00
qfpmamav	qfila	14.96	0.00
kixgrazr	potmb	14.01	0.01
poasibrd	poxlp	9.04	0.00
bixbrdem	gbdga	7.80	0.00
qfbbaprj	qfila	5.20	0.00
pobsisis	pomps	4.94	0.00

kibderua	qofcm	4.17	0.00
acplaing	jiads	3.67	0.00
quvvalom	qfjfg	2.19	0.00
poaszsze	poxlp	1.46	0.00
povwawaj	pojoo	0.64	0.00
pobmelat	arinadm	0.60	0.00
enbzhzh	egune	0.13	0.00
sysacas	supra	0.04	0.00
pobromam	pomps	0.02	0.00
webogare	arinadm	0.00	0.00

Table 2: Calculated time and waiting time in days of the groups.

GROUP	Calculated Days	Waiting Time
polymat	22326.90	0.00
qfjfg	11502.32	0.07
poahh	9420.95	0.14
pomps	7213.35	0.00
pojoo	4688.58	0.18
poxlp	2008.84	0.00
qocpn	1767.16	0.00
egune	1590.05	0.01
qofcm	575.57	0.31
qfila	485.24	0.00
potmb	145.92	0.01
nanogune	118.53	0.01
bgjal	114.36	0.00
faraz	110.54	0.00
nmage	97.66	0.14
jiads	28.03	0.01
poemg	19.23	0.00
gbdga	7.80	0.00
arinadm	0.61	0.00
supra	0.04	0.00

## Arina Data Storage Top Users

In the following graph we plot the users having more data in Arina in the last month. If you appear in this graph, we strongly encourage you to reduce your data in Arina.

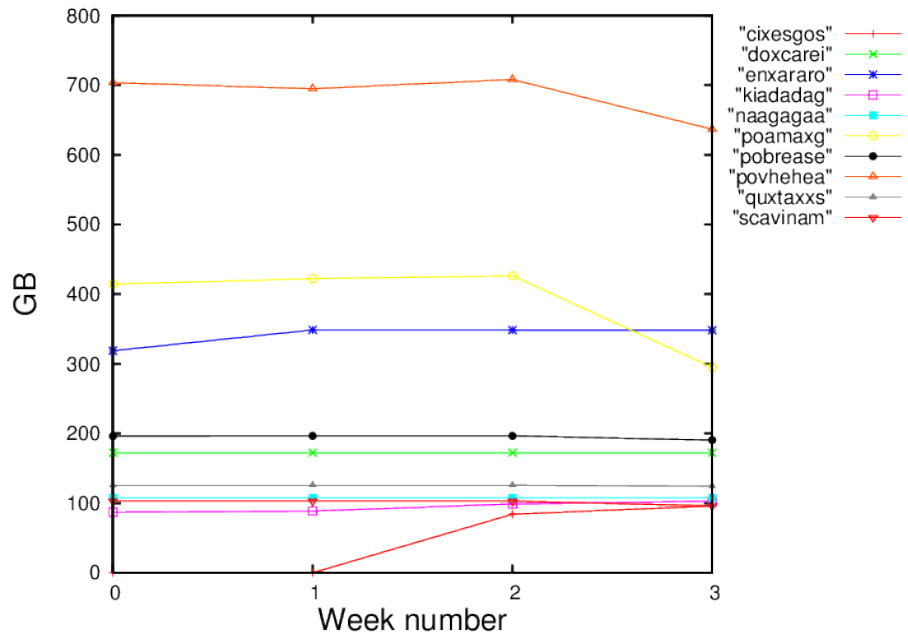


Figure 2: Storage evolution in the last month in GB.