

Estadistics for September/2016

October 1, 2016

Arina

In this brief document we show the usage of arina during September. This month 63208 computing days where used and the the average use of the cluster was 109 %. Since the first of December 512681 computing days where used and the the average use of the Arina cluster was 90 %. The figure shows the usage of Arina along the month. In the first table the usage of each user is shown. The third column indicates all the time each user has used for calculation during this month. The fourth column shows the average time that each job was waiting before the it started running, in days units. In the second table, the same data as in table 1 collected by group is shown.

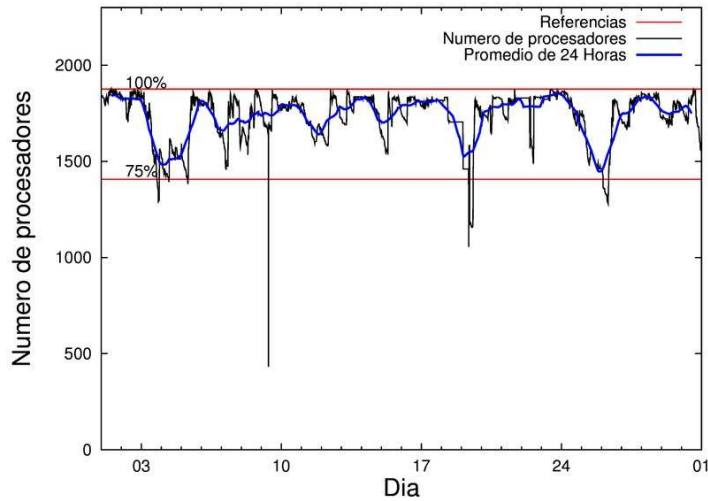


Figure 1: Cluster use. The blue line is a 24 hours average.

Table 1: Calculated time and waiting time in days of the users.

USER	GROUP	Calculated Days	Waiting Time
csazusej	nanogune	23250.12	1.72
povhehea	poahh	6690.73	3.43
enxararo	egune	4288.52	0.14
poalocad	polymat	4116.42	0.57
poamaxg	polymat	3551.06	2.19
kixgrazr	potmb	3356.75	1.26
bckmimoj	qfjfg	2523.44	0.77
quainbea	qfjfg	1743.07	1.37
juranga004	potmb	1347.64	0.30
quxmarur	qfjfg	1196.49	0.55
qoaarecl	qofcm	1172.40	0.12
pobrease	potmb	1088.73	1.02
povrucif	polymat	1072.42	0.37
povmieci	pojju	878.36	0.42
qopgobee	qocpn	820.16	0.10
anpgaetk	anjbc	734.22	0.47
enxcacaj	egune	616.33	0.34
pobmugoj	pomps	507.82	0.73
kibderua	qofcm	486.02	0.08
pobmelat	arinadm	453.10	0.30
qfbgoroj	qfjfg	337.54	0.24
poajejec	polymat	328.77	0.21
qfpmamoh	qfila	278.47	0.04
kiasomal	qocpn	277.30	0.05
qoparaya	qofcm	260.44	0.08
pobgrgrs	pomps	238.65	0.49
faacalea	qfjfg	197.30	1.75
scavinam	poemg	166.54	0.39
pobrease	polymat	158.71	0.64
dixsasam	pojju	140.95	0.14
pobcacad	pojju	137.78	0.34
popugurj	pojju	110.75	0.63
quxlegoa	qfjfg	95.50	1.82
gbpbesej	gbavm	84.06	0.64
pobmabej	potmb	80.25	0.13
kiadadag	pojju	78.19	4.25
quvvalom	qfjfg	68.87	1.24
qopcomof	qofcm	67.09	0.10
faavzae	qfila	38.42	0.06
bixbrdem	gbdga	32.86	0.07
wubcavaa	wuash	29.43	0.34
ggplaarj	ggmer	25.90	0.00
quaurhei	qfjfg	21.83	0.07
qopalpec	qofpg	19.22	0.01
qfjbaprj	qfila	8.19	0.10
ciazuulm	pojju	6.11	0.13
mapalmau	qtftp	6.10	0.01

mapmemam	qtftp	4.42	0.12
ciaarme	pojuu	4.32	0.15
doxcarei	poemg	3.65	0.65
qoprualg	qofpg	2.76	0.02
scpridei	qofcm	2.46	0.01
qobsalae	qambm	2.14	0.04
paslobej	pajlb	0.92	0.04
kibguvej	poemg	0.90	0.01
sckwankm	waars	0.32	0.02
kiaurbao	poxlp	0.18	0.30
webogare	arinadm	0.02	0.04
quaduree	qfila	0.01	0.02
pobsisis	pomps	0.00	0.02
pobromam	pomps	0.00	0.00
acplaing	jiads	0.00	0.13

Table 2: Calculated time and waiting time in days of the groups.

GROUP	Calculated Days	Waiting Time
nanogune	23250.12	1.72
polymat	9227.39	0.53
poahh	6690.73	3.43
qfjfg	6184.04	1.11
potmb	5873.36	0.54
egune	4904.85	0.20
qofcm	1988.41	0.10
pojuu	1356.46	0.63
qocpn	1097.46	0.09
pomps	746.47	0.62
anjbc	734.22	0.47
arinadm	453.12	0.28
qfila	325.09	0.06
poemg	171.08	0.36
gbavm	84.06	0.64
gbdga	32.86	0.07
wuash	29.43	0.34
ggmer	25.90	0.00
qofpg	21.98	0.02
qtftp	10.52	0.03
qambm	2.14	0.04
pajlb	0.92	0.04
waars	0.32	0.02
poxlp	0.18	0.30
jiads	0.00	0.13

Arina Data Storage Top Users

In the following graph we plot the users having more data in Arina in the last month. If you appear in this graph, we strongly encourage you to reduce your data in Arina.

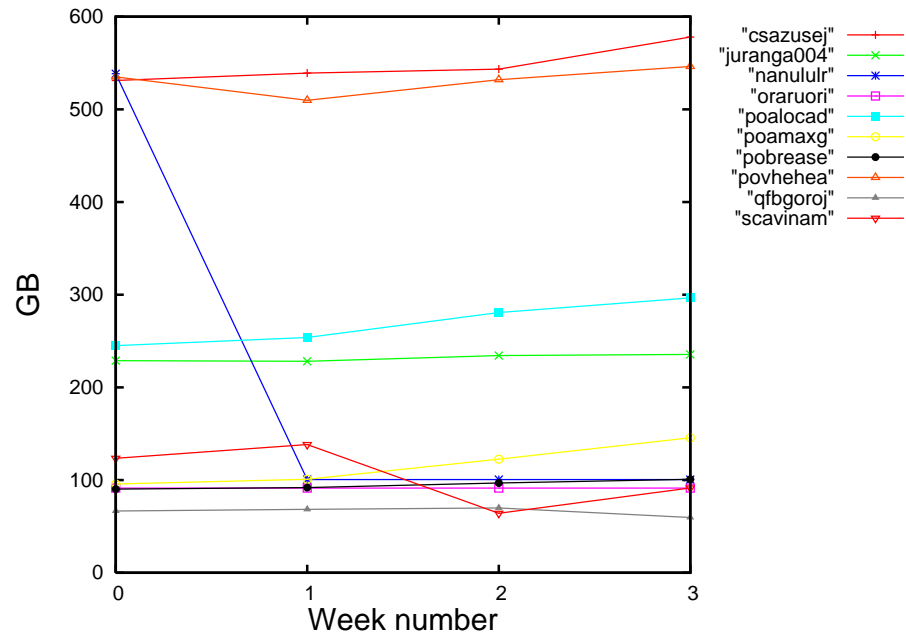


Figure 2: Storage evolution in the last month in GB.