

Estadistics for September/2015

October 30, 2015

Arina

In this brief document we show the usage of arina during September. This month 43039 computing days where used and the the average use of the cluster was 77 %. Since the first of December 474577 computing days where used and the the average use of the Arina cluster was 83 %. The figure shows the usage of Arina along the month. In the first table the usage of each user is shown. The third column indicates all the time each user has used for calculation during this month. The fourth column shows the average time that each job was waiting before the it started running, in days units. In the second table, the same data as in table 1 collected by group is shown.

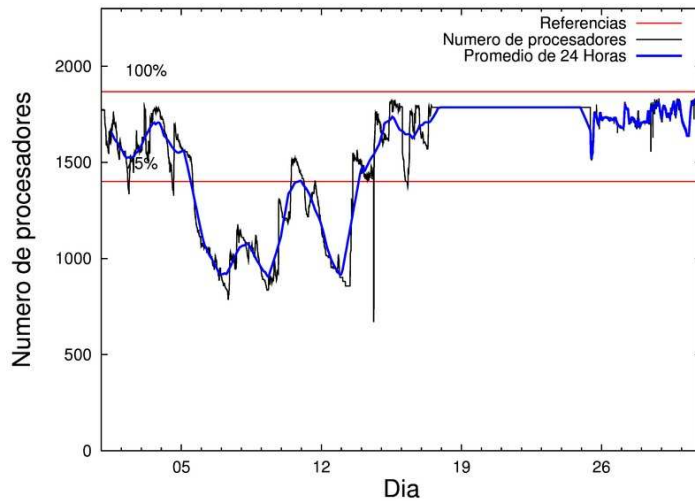


Figure 1: Cluster use. The blue line is a 24 hours average.

Table 1: Calculated time and waiting time in days of the users.

USER	GROUP	Calculated Days	Waiting Time
poamaxg	polymat	4785.94	0.17
poalocad	polymat	3888.74	0.20
povhehea	poahh	2192.52	1.68
pobmugoj	pomps	1510.01	0.03
pobgrgrs	pomps	1047.66	0.23
pobmabej	potmb	1001.31	0.02
ggplaarj	ggmer	995.29	0.36
juranga004	potmb	840.32	0.02
povrucif	polymat	720.62	0.01
fabusgui	qfjfg	641.08	0.30
dixsasam	pojju	252.37	0.13
kibderua	qofcm	218.94	0.00
csazusej	nanogune	182.77	0.00
bixbrdem	gbdga	135.78	0.02
qovzaxxr	polymat	111.34	0.18
kixgrazr	potmb	104.86	0.24
qopgobee	qocpn	103.94	0.00
ggpagrom	ggmer	98.36	0.86
nanululr	nanogune	85.08	0.00
kivpepor	kirpp	65.68	0.02
qoprualg	qofpg	59.74	0.00
kiadadag	pojju	45.90	0.02
pobcacad	pojju	40.99	0.00
qopcomof	qofcm	34.29	0.00
qfbgoroj	qfjfg	22.69	0.00
qfpmamoh	qfila	18.62	0.01
sckwankm	waars	16.89	0.00
qfbloala	qfjfg	11.57	0.00
bcpfimaa	mimam	10.93	0.00
poplopex	pojju	7.17	0.02
qopalpec	qofpg	3.58	0.00
quaurhei	qfjfg	3.53	0.00
qfxaldad	qflp	3.18	0.00
popugurj	pojju	2.77	0.00
vcposamj	vcnor	2.65	0.01
webogare	arinadm	2.17	0.19
pobfoese	poxlp	0.84	0.00
qobsalae	qambm	0.39	0.00
wepgaara	weaga	0.24	0.00
kiasomal	qocpn	0.10	0.01
inppesbaa	qpjag	0.07	0.00
pobmelat	arinadm	0.05	0.00
paslobej	pajlb	0.03	0.00

Table 2: Calculated time and waiting time in days of the groups.

GROUP	Calculated Days	Waiting Time
polymat	9506.68	0.15
pomps	2557.67	0.03
poahh	2192.52	1.68
potmb	1946.50	0.02
ggmer	1093.65	0.40
qjfg	678.87	0.20
pojju	358.02	0.06
nanogune	267.85	0.00
qofcm	253.22	0.00
gbdga	135.78	0.02
qocpn	104.04	0.00
kirpp	65.68	0.02
qofpg	63.32	0.00
qfila	18.62	0.01
waars	16.89	0.00
mimam	10.93	0.00
qflp	3.18	0.00
vcnor	2.65	0.01
arinadm	2.22	0.11
poxlp	0.84	0.00
qambm	0.39	0.00
weaga	0.24	0.00
qpjag	0.07	0.00
pajlb	0.03	0.00

Arina Data Storage Top Users

In the following graph we plot the users having more data in Arina in the last month. If you appear in this graph, we strongly encourage you to reduce your data in Arina.

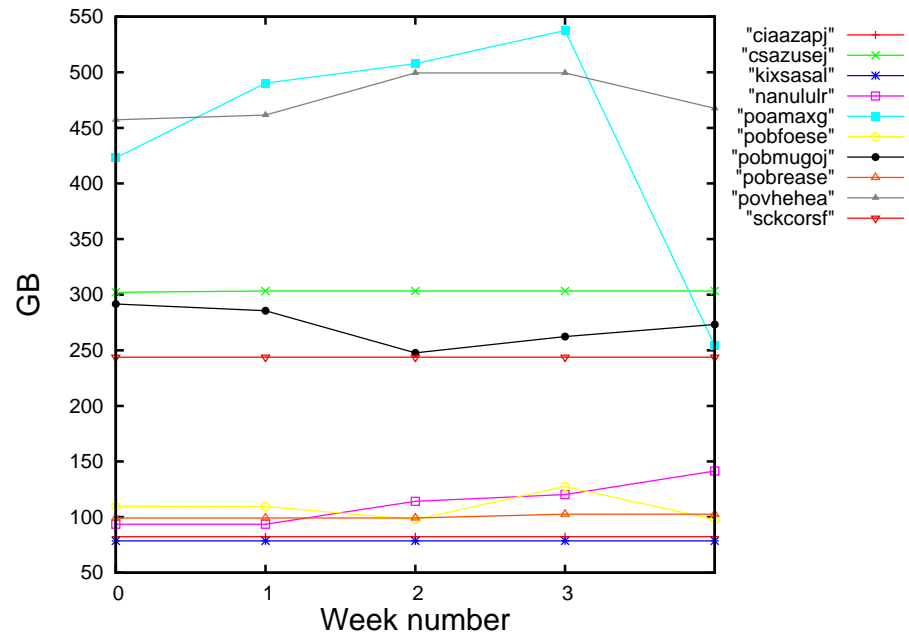


Figure 2: Storage evolution in the last month in GB.

Péndulo

This month computing days where used in **Péndulo** and the the average use of the cluster was %. Since the first of December computing days where used and the the average use of the cluster was %. The figure shows the usage of Péndulo along the month. In the first table the usage of each user is shown. The third column indicates all the time each user has used for calculation during this month. The fourth column shows the average time that each job was waiting before the it started running, in days units. In the second table, the same data as in table 1 collected by group is shown.

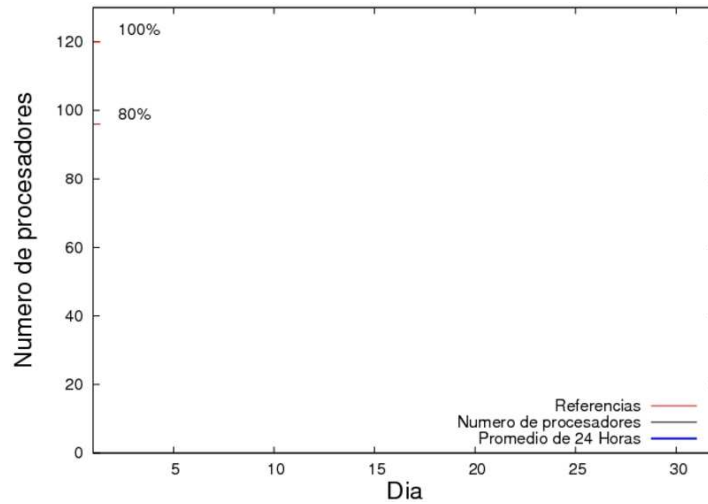


Figure 3: Cluster use. The blue line is a 24 hours average.

Table 3: Calculated time and waiting time in days of the users.

USER	GROUP	Calculated Days	Waiting Time
------	-------	-----------------	--------------

Table 4: Calculated time and waiting time in days of the groups.

GROUP	Calculated Days	Waiting Time
-------	-----------------	--------------