

Estadistics for September/2014

October 1, 2014

Arina

In this brief document we show the usage of arina during September. This month 31150 computing days where used and the the average use of the cluster was 82 %. Since the first of December 358299 computing days where used and the the average use of the Arina cluster was 92 %. The figure shows the usage of Arina along the month. In the first table the usage of each user is shown. The third column indicates all the time each user has used for calculation during this month. The fourth column shows the average time that each job was waiting before the it started running, in days units. In the second table, the same data as in table 1 collected by group is shown.

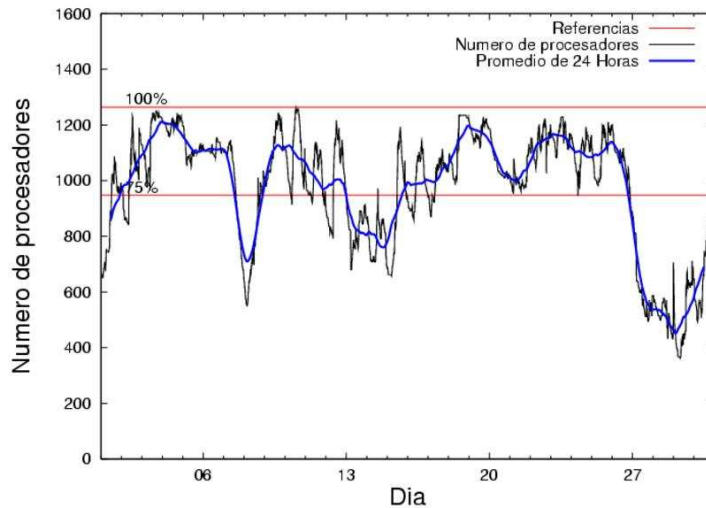


Figure 1: Cluster use. The blue line is a 24 hours average.

Table 1: Calculated time and waiting time in days of the users.

USER	GROUP	Calculated Days	Waiting Time
povhehea	poahh	9421.31	0.13
pobmugoj	pomps	3432.05	0.01
sckcorsf	nanogune	2420.14	0.85
pobfoese	poxlp	2254.60	0.10
poblairo	poxlp	2211.24	0.07
povrucif	polymat	1663.35	0.00
csazusej	nanogune	1631.37	0.49
qopgobee	qocpn	1156.07	0.01
nanululr	nanogune	1139.11	0.37
ciaazapj	poxlp	1050.05	0.04
juranga004	potmb	1032.74	0.04
kibderua	qofcm	941.95	0.00
pobgrgs	pomps	438.06	0.00
pobrease	potmb	376.22	0.01
pobmabej	potmb	294.84	0.00
pobrease	pojju	248.30	0.06
qfbgoroj	qfjfg	236.13	0.10
fabusgui	qfjfg	234.67	0.14
bckmimoj	qfjfg	186.26	0.11
kiaolfeb	qocpn	180.04	0.05
qovzaxxr	qorzz	105.24	0.26
qoaarecl	qofcm	92.87	0.00
bavfepem	pojju	45.71	0.01
pobinini	poxlp	42.22	0.01
kibmeheg	pojju	39.85	0.02
acplaing	jiads	37.51	0.18
sckwankm	waars	36.60	0.00
poplopex	pojju	26.89	0.01
qobmimuj	lgsgi	26.74	0.02
qfbleoni	qfjfg	26.65	0.00
sgkluqun	poxlp	22.99	0.00
inppebaa	qpjag	19.91	0.00
pmarkaide001	ggmer	10.22	0.00
qfpbaprj	qfila	9.34	0.00
webogare	arinadm	7.13	0.00
qfxaldad	qflp	6.43	0.01
kiaurbao	poxlp	5.05	0.00
naaalcaa	nanopeji	5.04	0.00
waxpoxxy	waars	4.98	0.00
wuppobam	wuebp	4.61	0.01
kiasomal	qocpn	4.41	0.01
wapgoesj	wakgg	4.07	0.00
quxlegoa	qfjfg	3.82	0.02
pobmelat	arinadm	3.62	0.00
qopcomof	qofcm	3.60	0.00
gbpaljod	gbm gg	1.97	0.00
mapalmau	qtftp	1.33	0.01

qfpesmai	qfila	0.97	0.01
povwawaj	pojoo	0.79	0.00
upetralanda001	wdaga	0.53	0.00
bcpfimaa	mimam	0.30	0.09
wabpepaa	waars	0.02	0.00

Table 2: Calculated time and waiting time in days of the groups.

GROUP	Calculated Days	Waiting Time
poahh	9421.31	0.13
poxlp	5586.15	0.05
nanogune	5190.62	0.48
pomps	3870.11	0.01
potmb	1703.80	0.01
polymat	1663.35	0.00
qocpn	1340.52	0.04
qofcm	1038.42	0.00
qfjfg	687.52	0.08
pojoo	361.54	0.01
qorz	105.24	0.26
waars	41.59	0.00
jiads	37.51	0.18
lgsgi	26.74	0.02
qpjag	19.91	0.00
arinadm	10.74	0.00
qfila	10.32	0.01
ggmer	10.22	0.00
qflp	6.43	0.01
nanopeji	5.04	0.00
wuebp	4.61	0.01
wakgg	4.07	0.00
gbmgg	1.97	0.00
qtftp	1.33	0.01
wdaga	0.53	0.00
mimam	0.30	0.09

Arina Data Storage Top Users

In the following graph we plot the users having more data in Arina in the last month. If you appear in this graph, we strongly encourage you to reduce your data in Arina.

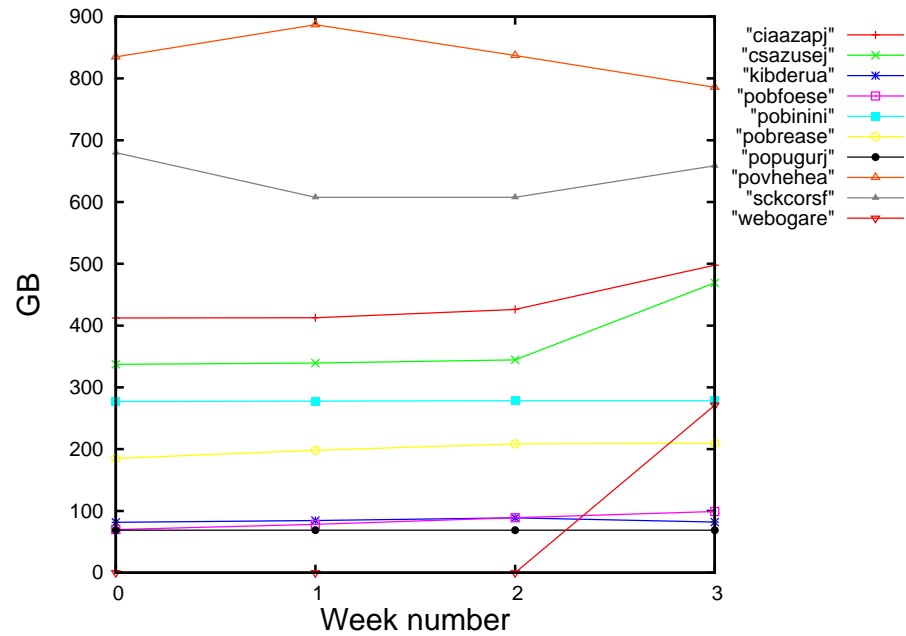


Figure 2: Storage evolution in the last month in GB.

Péndulo

This month 136 computing days were used in **Péndulo** and the the average use of the cluster was 6 %. Since the first of December 5438 computing days were used and the the average use of the cluster was 22 %. The figure shows the usage of Péndulo along the month. In the first table the usage of each user is shown. The third column indicates all the time each user has used for calculation during this month. The fourth column shows the average time that each job was waiting before the it started running, in days units. In the second table, the same data as in table 1 collected by group is shown.

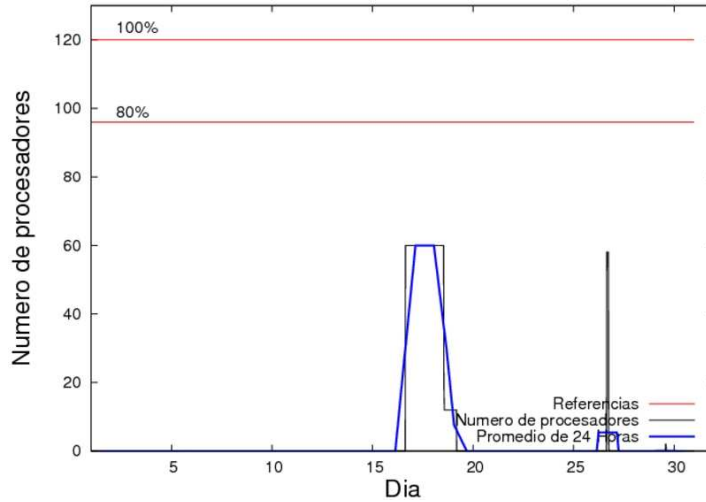


Figure 3: Cluster use. The blue line is a 24 hours average.

Table 3: Calculated time and waiting time in days of the users.

USER	GROUP	Calculated Days	Waiting Time
qovzaxxr	qofcm	130.52	0.70
jtpprugg	jtjob	5.56	0.02

Table 4: Calculated time and waiting time in days of the groups.

GROUP	Calculated Days	Waiting Time
qofcm	130.52	0.70
jtjob	5.56	0.02