

Estadistics for September/2013

October 1, 2013

Arina

In this brief document we show the usage of arina during September. This month 35068 computing days where used and the the average use of the cluster was 87 %. Since the first of December 328176 computing days where used and the the average use of the Arina cluster was 80 %. The figure shows the usage of Arina along the month. In the first table the usage of each user is shown. The third column indicates all the time each user has used for calculation during this month. The fourth column shows the average time that each job was waiting before the it started running, in days units. In the second table, the same data as in table 1 collected by group is shown.

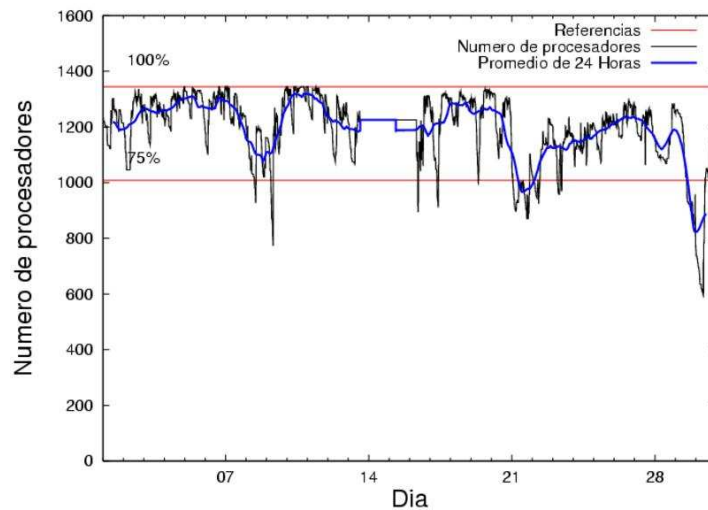


Figure 1: Cluster use. The blue line is a 24 hours average.

Table 1: Calculated time and waiting time in days of the users.

USER	GROUP	Calculated Days	Waiting Time
povhehea	poahh	13099.34	0.43
scpzuola	qorzz	4400.84	0.82
bckmimoj	qfjfg	2184.46	0.27
popugurj	pojju	2062.37	0.28
povrucif	polymat	2019.68	0.04
pobmugoj	pojju	1785.40	0.14
pobrease	potss	1699.95	0.17
ciaazapj	poxlp	1556.96	0.10
csazusej	nanogune	1162.61	0.03
kibderua	qofcm	966.38	0.10
pobinini	pojju	556.28	0.05
pobcacad	pojju	450.93	0.00
qoparaya	qofcm	435.96	0.09
poplopex	pojju	401.51	0.07
sckcorsf	nanogune	387.45	0.23
fabusgui	qfjfg	334.20	0.63
qobconde	qofcm	202.56	0.09
qoaarecl	qofcm	185.71	0.07
mapalmau	qtftp	165.31	0.19
inpleibf	infi	145.61	0.12
quxlegoa	qfjfg	125.34	0.13
bixcobum	gbdga	120.19	0.04
juranga004	potmb	104.32	0.00
pobmelat	arinadm	87.02	0.01
cixesesb	poxlp	59.52	0.26
qopgobee	qocpn	42.79	0.02
favecvcp	qfjfg	40.09	0.04
favcopee	qfjfg	37.43	0.02
qfploarf	qfila	32.60	0.06
pobgrgrs	pojju	32.01	0.04
kixsasal	pojju	31.99	0.01
kibmeheg	pojju	26.86	0.19
upetralanda001	wdaga	25.97	0.02
quxbabai	qfjfg	22.74	0.03
gaazareg	injss	18.20	0.09
qfpesmai	qfila	15.05	0.00
ekpvbaa	ekjgm	13.82	0.14
qoprualg	qofpg	8.63	0.00
sgkluqun	pojju	7.86	0.01
povpisim	pomps	6.78	0.01
qopcomof	qofcm	1.77	0.00
sckwankm	waars	1.48	0.01
bavfepem	pojju	1.43	0.02
wapgoesj	wakgg	0.21	0.00
pobmabej	pojju	0.11	0.00
qfxaldad	qflp	0.09	0.00

povwawaj	pojuu	0.04	0.00
----------	-------	------	------

Table 2: Calculated time and waiting time in days of the groups.

GROUP	Calculated Days	Waiting Time
poahh	13099.34	0.43
pojuu	5356.79	0.12
qorzz	4400.84	0.82
qfjfg	2744.25	0.23
polymat	2019.68	0.04
qofcm	1792.37	0.09
potss	1699.95	0.17
poxlp	1616.48	0.12
nanogune	1550.06	0.18
qtftp	165.31	0.19
inpli	145.61	0.12
gbdga	120.19	0.04
potmb	104.32	0.00
arinadm	87.02	0.01
qfila	47.65	0.04
qocpn	42.79	0.02
wdaga	25.97	0.02
injss	18.20	0.09
ekjgm	13.82	0.14
qofpg	8.63	0.00
pomps	6.78	0.01
waars	1.48	0.01
wakgg	0.21	0.00
qflp	0.09	0.00

Arina Data Storage Top Users

In the following graph we plot the users having more data in Arina in the last month. If you appear in this graph, we strongly encourage you to reduce your data in Arina.

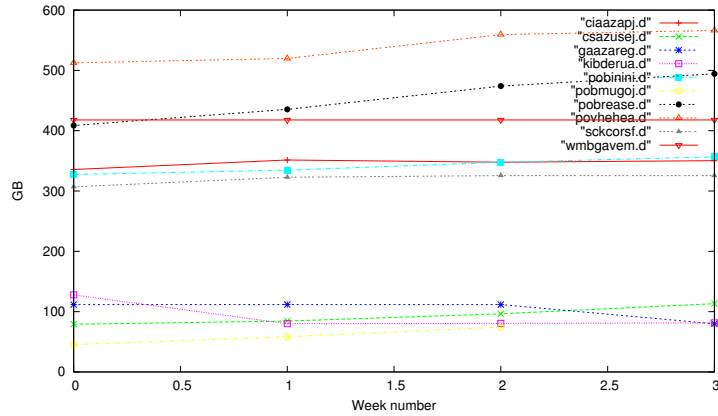


Figure 2: Storage evolution in the last month (in GB).

Péndulo

This month 1 computing days where used in **Péndulo** and the the average use of the cluster was 0 %. Since the first of December 1505 computing days where used and the the average use of the cluster was 6 %. The figure shows the usage of Péndulo along the month. In the first table the usage of each user is shown. The third column indicates all the time each user has used for calculation during this month. The fourth column shows the average time that each job was waiting before the it started running, in days units. In the second table, the same data as in table 1 collected by group is shown.

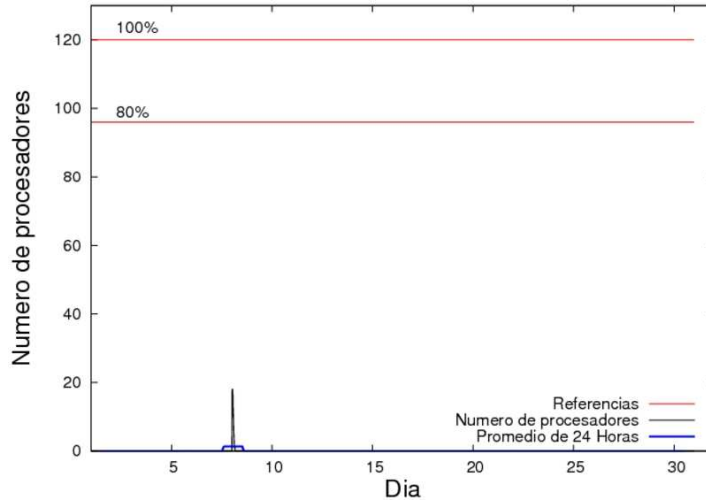


Figure 3: Cluster use. The blue line is a 24 hours average.

Table 3: Calculated time and waiting time in days of the users.

USER	GROUP	Calculated Days	Waiting Time
mtpmafel	mtgfa	1.41	0.01

Table 4: Calculated time and waiting time in days of the groups.

GROUP	Calculated Days	Waiting Time
mtgfa	1.41	0.01