

Estadistics for September/2012

October 1, 2012

Arina

In this brief document we show the usage of arina during September. This month 33128 computing days where used and the the average use of the cluster was 79 %. Since the first of December 314094 computing days where used and the the average use of the Arina cluster was 74 %. The figure shows the usage of Arina along the month. In the first table the usage of each user is shown. The third column indicates all the time each user has used for calculation during this month. The fourth column shows the average time that each job was waiting before the it started running, in days units. In the second table, the same data as in table 1 collected by group is shown.

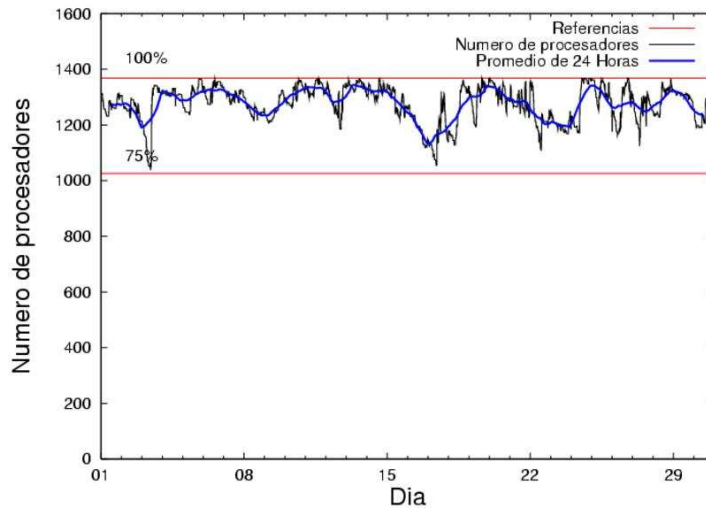


Figure 1: Cluster use. The blue line is a 24 hours average.

Table 1: Calculated time and waiting time in days of the users.

USER	GROUP	Calculated Days	Waiting Time
sckcorsf	nanogune	8555.85	0.72
povhehea	poahh	4733.57	0.21
kibpapaa	qorzz	2727.12	3.77
scpzuola	qorzz	1833.15	1.26
ciaazapj	poxlp	1785.53	0.56
qoaarecl	qofcm	1475.39	0.23
nabzezem	nanogune	1403.68	0.38
favcopee	qfjfg	1385.01	1.42
bcklogoi	inffi	1264.27	1.62
qopgobee	qocpn	1190.65	0.08
pobgrgrs	pojoo	964.20	0.22
pobmugoj	pojoo	743.22	0.08
bckmimoj	qfjfg	595.52	0.10
qfploarf	qfila	542.34	0.11
csazusej	nanogune	535.57	0.32
wmbgavem	waets	488.61	0.23
pobrease	potss	472.09	1.10
kibderua	qofcm	402.38	0.10
kibmeheg	pojoo	383.53	0.11
quxbabai	qfjfg	324.00	0.02
etpdihei	etjfm	223.28	0.34
qobconde	qofcm	199.05	0.09
qfpmamoh	qfila	190.96	0.05
povrucif	poxlp	157.26	0.11
juranga004	potmb	98.91	0.06
cixesesb	poxlp	89.08	0.34
qoparaya	qofcm	80.82	0.02
iapgarue	iaegr	65.36	0.08
qopcomof	qofcm	65.23	0.03
qfpesmai	qfila	37.84	0.00
pmarkaide001	ggmer	30.44	1.01
bcpitaia	bcizb	24.82	0.00
wabpepaa	waars	16.40	0.18
pobmabej	pojoo	11.98	0.00
qobmimuj	lgsgi	8.24	0.04
popugurj	pojoo	6.80	0.08
poblairo	poxlp	6.09	0.02
pobmelat	arinadm	3.18	0.00
webogare	arinadm	2.82	0.00
qovzaxxr	qorzz	1.63	0.07
favecvcp	qfjfg	1.16	0.10
bcpcaaa	mimam	0.70	0.00
jtpanlod	jtjob	0.06	0.00

Table 2: Calculated time and waiting time in days of the groups.

GROUP	Calculated Days	Waiting Time
nanogune	10495.10	0.41
poahh	4733.57	0.21
qorzz	4561.90	2.43
qjfg	2305.70	0.15
qofcm	2222.87	0.16
pojju	2109.72	0.11
poxlp	2037.96	0.22
infi	1264.27	1.62
qocpn	1190.65	0.08
qfila	771.14	0.07
waets	488.61	0.23
potss	472.09	1.10
etjfm	223.28	0.34
potmb	98.91	0.06
iaegr	65.36	0.08
ggmer	30.44	1.01
bcizb	24.82	0.00
waars	16.40	0.18
lgsgi	8.24	0.04
arinadm	6.00	0.00
mimam	0.70	0.00
jtjob	0.06	0.00

Pendolo

This month 417 computing days were used in **Pendolo** and the the average use of the cluster was 20 %. Since the first of December 1670 computing days were used and the the average use of the cluster was 7 %. The figure shows the usage of Pendolo along the month. In the first table the usage of each user is shown. The third column indicates all the time each user has used for calculation during this month. The fourth column shows the average time that each job was waiting before the it started running, in days units. In the second table, the same data as in table 1 collected by group is shown.

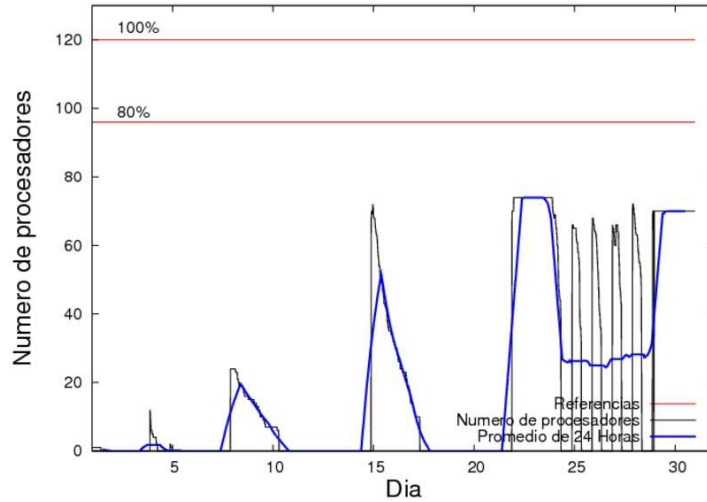


Figure 2: Cluster use. The blue line is a 24 hours average.

Table 3: Calculated time and waiting time in days of the users.

USER	GROUP	Calculated Days	Waiting Time
jtpanlod	jtjob	410.79	2.47
mtpmafel	mtgfa	5.92	0.20
webogare	arinadm	0.00	0.03

Table 4: Calculated time and waiting time in days of the groups.

GROUP	Calculated Days	Waiting Time
jtjob	410.79	2.47
mtgfa	5.92	0.20
arinadm	0.00	0.03

Ikerbasque machine

The service has access to 208 xeon cores in this machine, which are older than Arina's ones. The codes of only few big users are maintained there to optimize the maintenance time. This month 7553 computing days were used in **Ikerbasque** machine and the the average use of the cluster was 121 %. Since the first of December 33210 computing days were used and the the average use of the cluster was 52 %. In the first table the usage of each user is shown. The third column indicates all the time each user has used for calculation during this month. The fourth column shows the average time that each job was waiting before the it started running, in days units. In the second table, the same data as in table 1 collected by group is shown.

Table 5: Calculated time and waiting time in days of the users.

USER	GROUP	Calculated Days	Waiting Time
scpzuola	qorzz	4150.09	0.00
kibpapaa	qorzz	2557.36	0.00
pmarkaide001	ggmer	844.06	0.00
pobmugoj	pojju	1.75	0.00

Table 6: Calculated time and waiting time in days of the groups.

GROUP	Calculated Days	Waiting Time
qorzz	6707.44	0.00
ggmer	844.06	0.00
pojju	1.75	0.00