

Estadistics for September/2011

October 4, 2011

Arina

In this brief document we show the usage of arina during September. This month 16508 computing days where used and the the average use of the cluster was 73 %. Since the first of December 173778 computing days where used and the the average use of the cluster was 76 %. The figure shows the usage of Arina along the month. In the first table the usage of each user is shown. The third column indicates all the time each user has used for calculation during this month. The fourth column shows the average time that each job was waiting before the it started running, in days units. In the second table, the same data as in table 1 collected by group is shown.

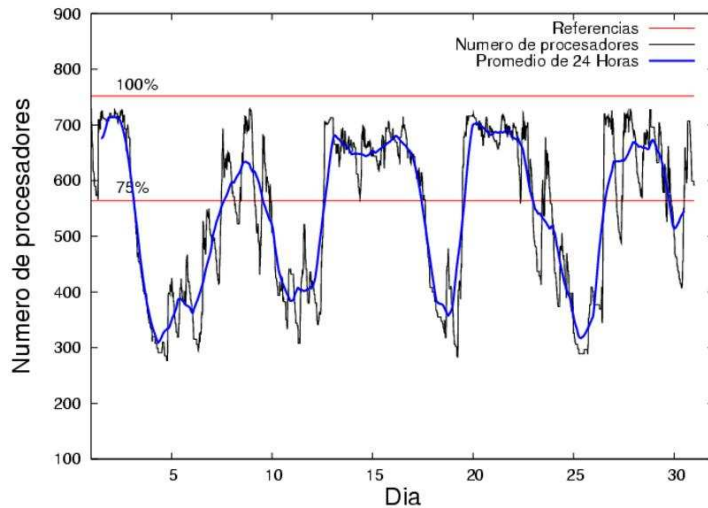


Figure 1: Cluster use. The blue line is a 24 hours average.

Table 1: Calculated time and waiting time in days of the users.

USER	GROUP	Calculated Days	Waiting Time
povhehea	poahh	4132.31	0.19
wmbgavem	waets	2204.67	0.11
favcopee	qfjfg	1564.96	0.17
pobrease	potss	1227.95	1.85
popugurj	pojuu	744.26	0.04
scpzuola	qorzz	681.39	0.67
pobmugoj	pojuu	644.01	0.03
pobgrgrs	pojuu	628.12	0.01
quxlegoa	qfjfg	602.65	0.39
ciaazapj	poxlp	545.36	0.06
kibderua	qofcm	435.30	0.03
scpfraim	qorzz	435.04	0.02
pobrease	pojuu	404.15	0.26
wabeslel	waars	372.22	0.14
qopgobee	qocpn	263.96	0.02
qoaarecl	qofcm	234.47	0.04
povrucif	poxlp	168.57	0.26
kibmeheg	pojuu	168.14	0.01
pobmelat	arinadm	147.95	0.00
bckmimoj	qfjfg	133.45	0.06
bcpremae	bcdbu	131.56	0.05
bcpcacaa	mimam	83.79	0.01
poblauro	poxlp	83.61	0.06
ggpzamai	ggmer	69.77	0.06
cixesesb	poxlp	66.70	0.28
qfpfegoj	qfjfg	57.12	0.43
pobmabej	pojuu	54.48	0.08
pobfoese	poxlp	41.44	0.06
poplopex	pojuu	35.57	0.01
favecvep	qfjfg	26.33	0.29
quxbabai	qfjfg	25.30	0.01
waptctce	waets	22.24	0.02
waxpoxxy	waars	21.04	0.01
poxmafie	pojuu	13.05	0.04
webogare	arinadm	9.81	0.01
qobmimuj	lgsgi	9.54	0.11
iapgarue	iaegr	6.09	0.00
qfjbaprij	qfila	5.72	0.06
wapgoesj	wakgg	3.77	0.00
mapmemam	qtftp	3.48	0.03
qfbloala	qfala	3.01	0.02
qopcomof	qofcm	2.75	0.01
wabgalaj	waars	2.24	0.00
pobinini	pojuu	2.09	0.00
gbbaghej	gbdga	1.54	0.32
ccpsoeta	jieab	1.13	0.00
povwawaj	pojuu	0.10	0.08

mapalmau	magps	0.08	1.22
kixmagre	poxlp	0.02	0.00
bcpmamza	qfjvv	0.01	0.05

Table 2: Calculated time and waiting time in days of the groups.

GROUP	Calculated Days	Waiting Time
poahh	4132.31	0.19
pojuu	2693.98	0.04
qfjfg	2409.80	0.30
waets	2226.90	0.09
potss	1227.95	1.85
qorzz	1116.43	0.20
poxlp	905.70	0.10
qofcm	672.53	0.04
waars	395.51	0.09
qocpn	263.96	0.02
arinadm	157.76	0.01
bcdbu	131.56	0.05
mimam	83.79	0.01
ggmer	69.77	0.06
lgsgi	9.54	0.11
iaegr	6.09	0.00
qfila	5.72	0.06
wakgg	3.77	0.00
qtftp	3.48	0.03
qfala	3.01	0.02
gbdga	1.54	0.32
jieab	1.13	0.00
magps	0.08	1.22
qfjvv	0.01	0.05

Pendolo

This month 3634 computing days were used in **Pendolo** and the the average use of the cluster was 14 %. Since the first of December computing days were used and the the average use of the cluster was %. The figure shows the usage of Pendolo along the month. In the first table the usage of each user is shown. The third column indicates all the time each user has used for calculation during this month. The fourth column shows the average time that each job was waiting before the it started running, in days units. In the second table, the same data as in table 1 collected by group is shown.

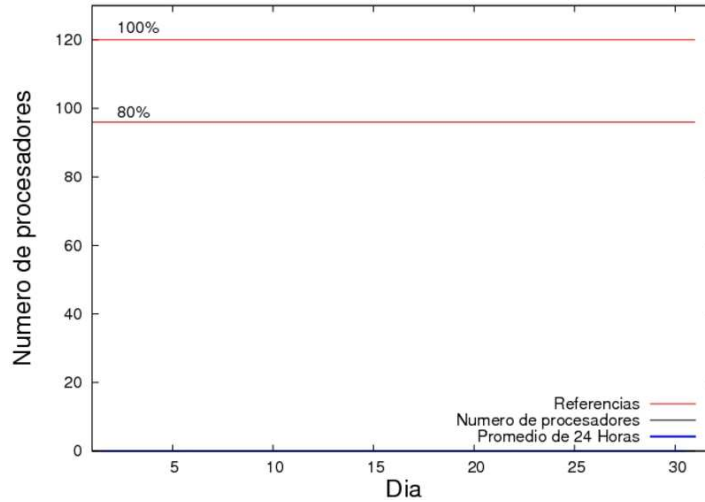


Figure 2: Cluster use. The blue line is a 24 hours average.

Table 3: Calculated time and waiting time in days of the users.

USER	GROUP	Calculated Days	Waiting Time
------	-------	-----------------	--------------

Table 4: Calculated time and waiting time in days of the groups.

GROUP	Calculated Days	Waiting Time
-------	-----------------	--------------

Ikerbasque machine

The service has access to 206 xeon cores in this machine, which are older than Arina's ones. The codes of only few big users are maintained there to optimize the maintenance time. This month 4673 computing days were used in **Ikerbasque** machine and the the average use of the cluster was 75 %. Since the first of June 31689 computing days were used and the the average use of the cluster was 123 %. In the first table the usage of each user is shown. The third column indicates all the time each user has used for calculation during this month. The fourth column shows the average time that each job was waiting before the it started running, in days units. In the second table, the same data as in table 1 collected by group is shown.

Table 5: Calculated time and waiting time in days of the users.

USER	GROUP	Calculated Days	Waiting Time
povhehea	poahh	3337.89	0.50
scpzuola	qorzz	1106.38	2.75
pobmugoj	pojoo	229.61	0.90

Table 6: Calculated time and waiting time in days of the groups.

GROUP	Calculated Days	Waiting Time
poahh	3337.89	0.50
qorzz	1106.38	2.75
pojoo	229.61	0.90