

Estadistics for August/2019

September 1, 2019

Arina

In this brief document we show the usage of arina during August. This month 70356 computing days were used and the average use of the cluster was 61 %. Since the first of December 809516 computing days were used and the average use of the Arina cluster was 79 %. The figure shows the usage of Arina along the month. In the first table the usage of each user is shown. The third column indicates all the time each user has used for calculation during this month. The fourth column shows the average time that each job was waiting before the it started running, in days units. In the second table, the same data as in table 1 collected by group is shown.

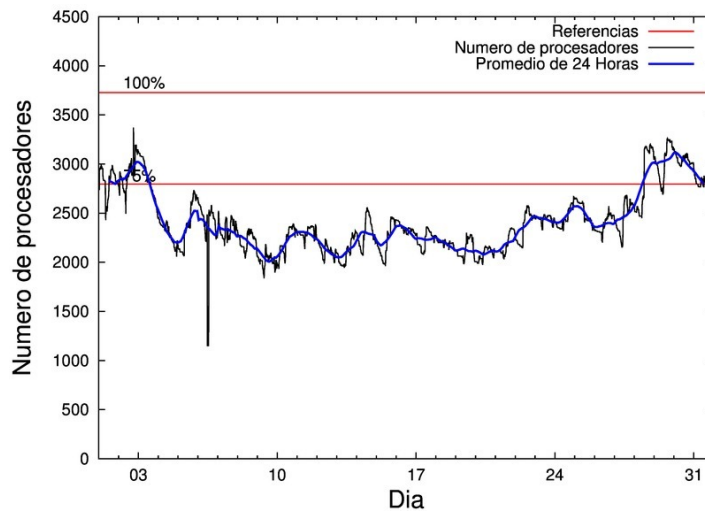


Figure 1: Cluster use. The blue line is a 24 hours average.

Table 1: Calculated time and waiting time in days of the users.

USER	GROUP	Calculated Days	Waiting Time
povhehea	poahh	15222.13	0.96
qovzaxxr	polymat	10617.33	0.13
povwawaj	pojoo	10411.86	0.14
poamaxg	polymat	7463.17	0.02
povrucif	polymat	3117.70	0.01
quxtaxxs	polymat	3005.43	0.01
poairurm	polymat	2628.23	0.36
poarloi	pojoo	2410.31	0.20
qfpmamoh	qfila	1873.42	0.00
poagafrm	pojoo	1333.34	0.10
qubhohol	qocpn	1177.93	0.00
pobladej	poxlp	977.51	0.15
poaurura	poxlp	861.00	0.00
pobgrgrs	pomps	813.11	0.00
ciaalece	pojoo	798.43	0.00
bcpliolj	bgjbp	778.68	0.43
qobcacea	qocpn	589.05	0.00
qfpesmai	qfila	553.72	0.08
fabusgui	qfjfg	534.80	0.00
poazago	potmb	514.80	0.00
pobtxe01	poxlp	487.94	0.00
kibderua	qoabl	342.58	0.00
enbxilij	egune	341.28	0.26
pobmabej	potmb	333.79	0.00
biadecum	bicgm	326.33	0.07
scavinam	poemg	298.06	0.00
ciaansap	pojoo	281.66	0.00
poaugbia	pojoo	260.08	0.08
faacalea	qfjfg	245.11	0.16
poanacuj	polymat	241.88	0.00
csazusej	nanogune	229.11	0.00
sckahnom	potmb	222.30	0.00
kiadadag	pojoo	217.38	0.44
poplopex	pojoo	130.44	0.00
povmieci	pojoo	130.27	0.00
qobpamap	qocpn	93.06	0.00
scpridei	qofcm	75.61	0.00
popporiv	poxlp	71.16	0.00
pobxlp01	poxlp	50.95	0.00
qubcaxxc	qfjfg	50.34	0.00
qfbleoni	qfjfg	46.28	0.00
popugurj	pojoo	41.35	0.00
quainbea	qfjfg	33.93	0.00
poaganau	polymat	26.94	0.02
qopgobee	qocpn	21.12	0.00
kiasomal	qocpn	16.79	0.00
pobmelat	arinadm	13.88	0.00

ikasle03	pomaster	11.09	0.00
faaatnaa	faraz	6.53	0.00
bgpmafea	bgjal	5.59	0.00
pobfoese	poxlp	5.15	0.00
mtpmafel	mtgfa	4.09	0.08
doxcarei	poemg	3.16	0.00
pobrease	potmb	2.97	0.00
qfbalale	qfjfg	2.70	0.00
quarulob	qfjfg	2.08	0.00
enxararo	egune	0.68	0.00
quaduree	qfila	0.00	0.00
kibderua	qofcm	0.00	0.00
dixsasam	pojoo	0.00	0.00
cdxroast	waaap	0.00	0.00

Table 2: Calculated time and waiting time in days of the groups.

GROUP	Calculated Days	Waiting Time
polymat	27100.68	0.02
pojoo	16015.12	0.04
poahh	15222.13	0.96
poxlp	2453.72	0.01
qfila	2427.14	0.01
qocpn	1897.95	0.00
potmb	1073.87	0.00
qfjfg	915.24	0.00
pomps	813.11	0.00
bgjbp	778.68	0.43
qoabl	342.58	0.00
egune	341.96	0.23
bicgm	326.33	0.07
poemg	301.22	0.00
nanogune	229.11	0.00
qofcm	75.61	0.00
arinadm	13.88	0.00
pomaster	11.09	0.00
faraz	6.53	0.00
bgjal	5.59	0.00
mtgfa	4.09	0.08
waaap	0.00	0.00

Arina Data Storage Top Users

In the following graph we plot the users having more data in Arina in the last month. If you appear in this graph, we strongly encourage you to reduce your data in Arina.

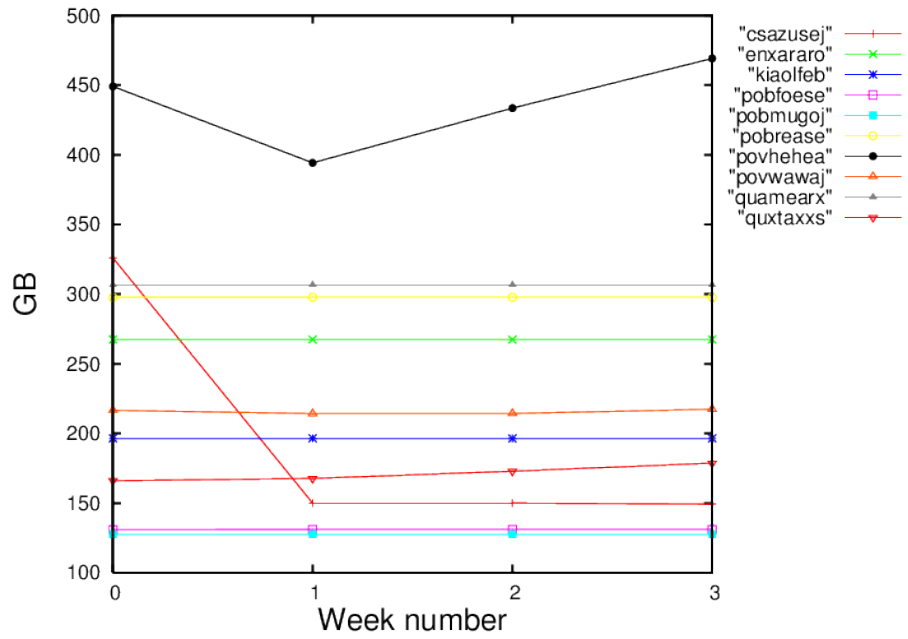


Figure 2: Storage evolution in the last month in GB.