

Estadistics for August/2018

September 1, 2018

Arina

In this brief document we show the usage of arina during August. This month 79124 computing days were used and the average use of the cluster was 69 %. Since the first of December 802993 computing days were used and the average use of the Arina cluster was 79 %. The figure shows the usage of Arina along the month. In the first table the usage of each user is shown. The third column indicates all the time each user has used for calculation during this month. The fourth column shows the average time that each job was waiting before the it started running, in days units. In the second table, the same data as in table 1 collected by group is shown.

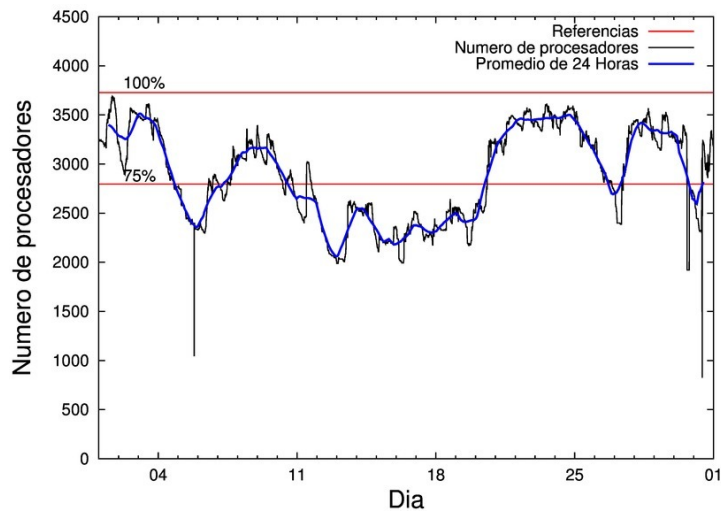


Figure 1: Cluster use. The blue line is a 24 hours average.

Table 1: Calculated time and waiting time in days of the users.

USER	GROUP	Calculated Days	Waiting Time
pobluluv	poxlp	12725.90	6.12
qovzaxxr	polymat	12710.74	0.18
povhehea	poahh	6713.30	2.23
powwawaj	pojoo	6152.45	0.09
povrucif	polymat	5687.34	0.25
pobladej	poxlp	3883.77	0.34
popugurj	pojoo	3351.03	0.56
fabusgui	qfjfg	3097.99	0.10
qfpmamoh	qfila	2666.69	0.46
poarloi	pojoo	2341.02	0.05
enxararo	egune	1954.89	0.19
pobmugoj	pomps	1802.23	0.02
pobrease	potmb	1757.18	0.01
poajejec	polymat	1691.52	0.01
pobgrgrs	pomps	1684.47	0.00
pobmabej	potmb	1353.45	0.02
sckahnom	potmb	945.83	0.02
kibderua	qofcm	881.75	0.00
wabgaari	waaap	816.37	0.31
faacalea	qfjfg	801.79	0.01
scavinam	poemg	763.83	0.12
kiadadag	pojoo	714.35	0.08
quxmarur	qfjfg	700.48	0.36
poasasab	polymat	687.07	0.02
csazusej	nanogune	546.22	0.04
poamaxg	polymat	533.79	0.55
enbxilij	egune	413.96	0.30
poaersai	poxlp	266.66	0.00
qopgobee	qocpn	233.51	0.00
favecvcp	qfjfg	204.61	0.36
quxlegoa	qfjfg	156.21	0.03
dixsasam	pojoo	147.01	0.01
pobeieit	poxlp	133.66	0.00
qobzazag	qocpn	98.61	0.00
qfjbaprj	qfila	87.55	0.01
pobfoese	poxlp	68.43	0.00
poagafrm	pojoo	53.85	0.00
poaganau	polymat	53.27	2.02
quaqugaj	qfila	34.75	0.00
qobpamap	qocpn	34.51	0.00
doxcarei	poemg	32.58	0.00
ciazuulm	pojoo	25.00	0.00
poazago	potmb	17.91	0.00
poaurura	poxlp	17.52	0.00
qfbloala	qfjfg	13.97	0.03
quapipip	qfjfg	13.40	0.00
quainbea	qfjfg	12.73	0.04

qfbleoni	qfjfg	10.54	0.00
bgpmuhoi	bcnsc	8.66	0.01
unxloesg	potmb	6.22	11.07
popporiv	poxlp	5.15	0.00
poasibrd	poxlp	4.00	0.00
webogare	arinadm	2.80	0.00
poaszsze	poxlp	1.60	0.00
faaatnaa	faraz	1.25	0.00
kixsasal	pojoo	0.33	0.00
qobconde	qofcm	0.20	0.00
poatealx	pojoo	0.18	0.00
anbgejin	anjbc	0.11	0.00
qopcomof	qofcm	0.06	0.00

Table 2: Calculated time and waiting time in days of the groups.

GROUP	Calculated Days	Waiting Time
polymat	21363.74	0.16
poxlp	17106.68	2.32
pojoo	12785.22	0.20
poahh	6713.30	2.23
qfjfg	5011.71	0.04
potmb	4080.59	0.06
pomps	3486.70	0.01
qfila	2788.99	0.10
egune	2368.85	0.19
qofcm	882.01	0.00
waaap	816.37	0.31
poemg	796.41	0.12
nanogune	546.22	0.04
qocpn	366.63	0.00
bcnsc	8.66	0.01
arinadm	2.80	0.00
faraz	1.25	0.00
anjbc	0.11	0.00

Arina Data Storage Top Users

In the following graph we plot the users having more data in Arina in the last month. If you appear in this graph, we strongly encourage you to reduce your data in Arina.

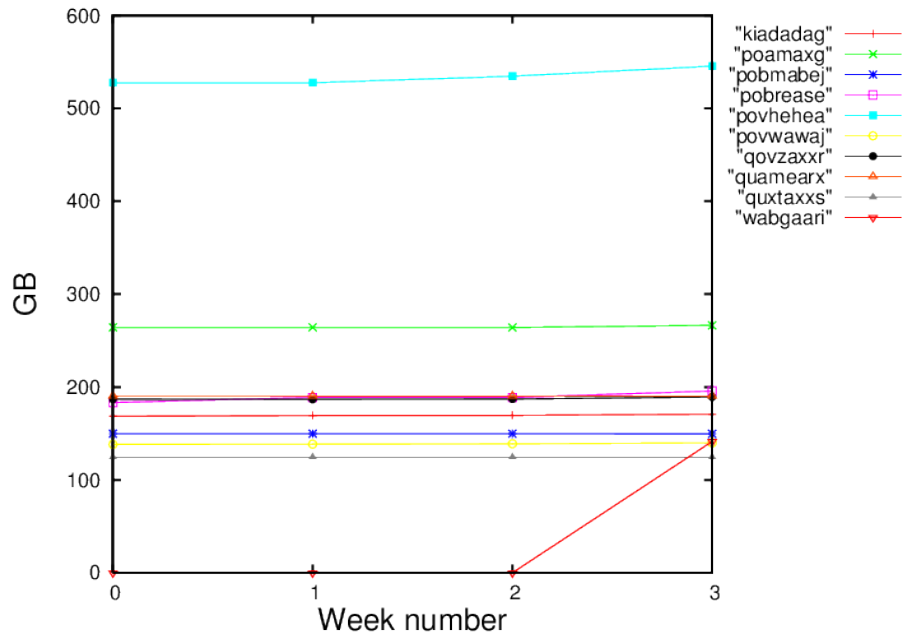


Figure 2: Storage evolution in the last month in GB.