

Estadistics for August/2017

September 1, 2017

Arina

In this brief document we show the usage of arina during August. This month 54704 computing days were used and the average use of the cluster was 47 %. Since the first of December 513485 computing days were used and the average use of the Arina cluster was 76 %. The figure shows the usage of Arina along the month. In the first table the usage of each user is shown. The third column indicates all the time each user has used for calculation during this month. The fourth column shows the average time that each job was waiting before the it started running, in days units. In the second table, the same data as in table 1 collected by group is shown.

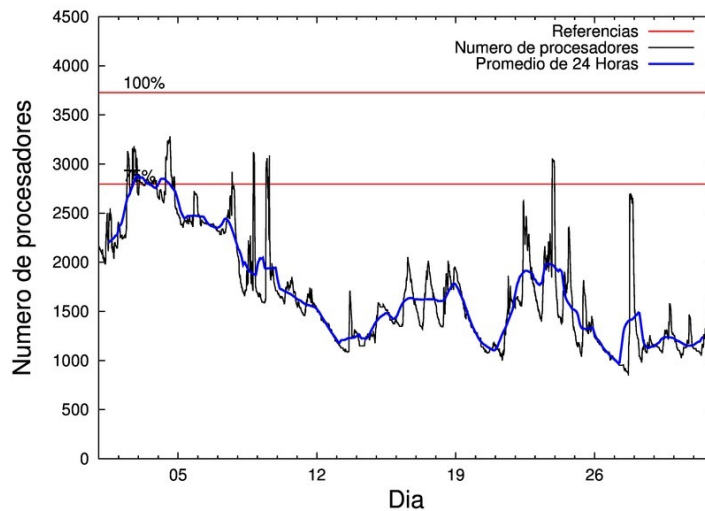


Figure 1: Cluster use. The blue line is a 24 hours average.

Table 1: Calculated time and waiting time in days of the users.

USER	GROUP	Calculated Days	Waiting Time
fabusgui	qfjfg	8640.98	1.76
poanacuj	polymat	5847.94	0.02
poamaxg	polymat	5229.11	0.03
povhehea	poahh	4907.27	0.30
pobgrgrs	pomps	2807.24	0.13
cixesgos	pojoo	2715.17	0.05
povrucif	polymat	2573.69	0.02
enxararo	egune	2034.61	0.02
qovzaxxr	polymat	1980.66	0.77
favcopee	qfjfg	1978.77	2.83
pobmugoj	pomps	1890.26	0.00
quainbea	qfjfg	1858.52	0.04
quxtaxxs	polymat	1598.27	0.01
poajejec	polymat	1458.00	0.00
pobmabej	potmb	1358.99	0.00
poalocad	polymat	1028.42	0.09
enxcacaj	egune	966.77	0.02
dixsasam	pojoo	759.30	0.05
naagagaa	nanogune	720.17	0.19
wmpetali	wdaga	589.37	0.01
kixgrazr	potmb	559.09	0.05
scavinam	poemg	520.71	0.01
quxmarur	qfjfg	465.62	2.05
pobmelat	arinadm	376.68	0.08
kiadadag	pojoo	254.91	0.00
poadoodj	potmb	242.24	0.00
qopgobee	qocpn	232.51	0.00
quaurhei	qfjfg	165.31	0.00
kiaolfeb	potss	136.90	0.00
naaruore	nanogune	104.98	0.00
pobrease	potmb	90.36	0.00
qobsalae	qambm	86.61	0.00
deaguura	nimage	84.06	0.68
wabgaari	waaap	79.60	0.14
pobfoese	poxlp	74.55	0.00
kiaurbao	poxlp	68.03	0.77
cianasas	pojoo	35.32	0.00
kixsasal	pojoo	32.18	0.01
poasibrd	poxlp	32.02	0.00
pobsisis	pomps	20.11	0.00
qfpmamoh	qfila	17.40	0.00
bgpmafea	bgjal	17.16	0.00
jipiloga	jiads	15.78	1.44
webogare	arinadm	15.15	0.01
doxcarei	poemg	8.43	0.00
enblairo	egune	7.04	0.02
kiasomal	qocpn	3.76	0.00

ciairaim	poxlp	2.98	0.00
poaorloi	pojju	2.59	0.00
quvvalom	qfjfg	2.41	0.01
ciatrnoa	pojju	1.86	0.00
ciaanisi	pojju	1.60	0.00
acplaing	jiads	1.05	0.00
bgpmuhoi	bcnsc	0.86	0.02
juranga004	potmb	0.48	0.00
poaszsze	poxlp	0.44	0.00
qfbloala	qfjfg	0.10	0.00
qopcomof	qofcm	0.00	0.00

Table 2: Calculated time and waiting time in days of the groups.

GROUP	Calculated Days	Waiting Time
polymat	19716.08	0.09
qfjfg	13111.72	0.54
poahh	4907.27	0.30
pomps	4717.62	0.02
pojju	3802.91	0.04
egune	3008.42	0.02
potmb	2251.16	0.00
nanogune	825.16	0.00
wdaga	589.37	0.01
poemg	529.13	0.01
arinadm	391.83	0.07
qocpn	236.27	0.00
poxlp	178.03	0.10
potss	136.90	0.00
qambm	86.61	0.00
nmage	84.06	0.68
waaap	79.60	0.14
qfila	17.40	0.00
bgjal	17.16	0.00
jiads	16.84	0.10
bcnsc	0.86	0.02
qofcm	0.00	0.00

Arina Data Storage Top Users

In the following graph we plot the users having more data in Arina in the last month. If you appear in this graph, we strongly encourage you to reduce your data in Arina.

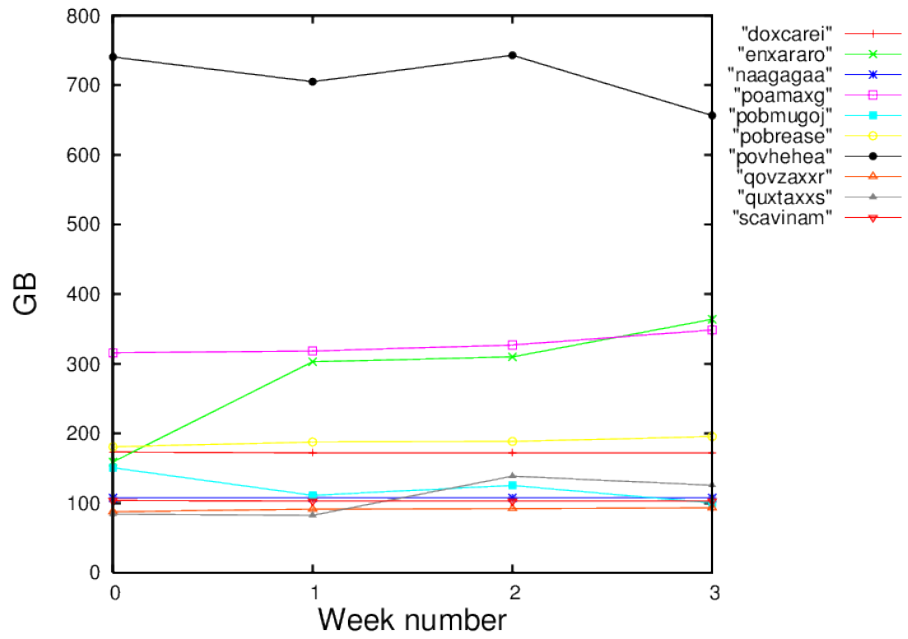


Figure 2: Storage evolution in the last month in GB.