

# Estadistics for August/2015

October 30, 2015

## Arina

In this brief document we show the usage of arina during August. This month 41841 computing days where used and the the average use of the cluster was 72 %. Since the first of December 431324 computing days where used and the the average use of the Arina cluster was 84 %. The figure shows the usage of Arina along the month. In the first table the usage of each user is shown. The third column indicates all the time each user has used for calculation during this month. The fourth column shows the average time that each job was waiting before the it started running, in days units. In the second table, the same data as in table 1 collected by group is shown.

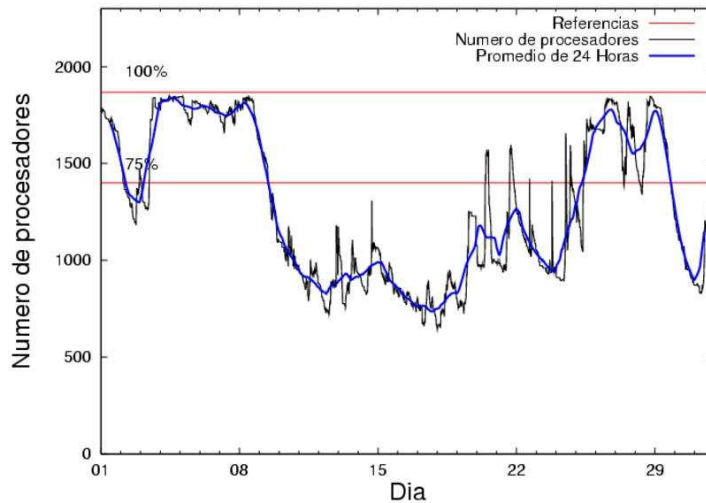


Figure 1: Cluster use. The blue line is a 24 hours average.

Table 1: Calculated time and waiting time in days of the users.

USER	GROUP	Calculated Days	Waiting Time
fabusgui	qfjfg	7875.48	2.24
poamaxg	polymat	7299.93	0.23
poalocad	polymat	6182.07	0.10
pobmabej	potmb	4501.01	0.02
povhehea	poahh	4063.61	0.62
csazusej	nanogune	2850.37	0.06
pobmugoj	pomps	1795.44	0.02
povrucif	polymat	1485.96	0.04
pobgrgrs	pomps	1071.14	0.04
juranga004	potmb	994.99	0.05
pobromam	pomps	668.19	0.00
bixbrdem	gbdga	523.92	0.02
kibderua	qofcm	396.16	0.02
pobfoese	poxlp	328.97	0.23
povpisim	pomps	256.04	0.00
qopgobee	qocpn	249.06	0.00
pobcacad	pojju	225.71	0.00
kixgrazr	potmb	192.32	0.12
popugurj	pojju	181.88	0.00
poanacuj	polymat	115.85	0.00
qfbgoroj	qfjfg	109.23	0.08
pobrease	potmb	101.75	0.16
kivpepor	kirpp	86.57	0.00
vcposamj	vcnor	68.98	0.07
kixbebej	poxlp	62.05	0.00
nanululr	nanogune	35.66	0.06
qopcomof	qofcm	35.57	0.00
qfpmamoh	qfila	18.84	0.00
webogare	arinadm	16.73	0.00
quaurhei	qfjfg	13.19	0.00
kiasomal	qocpn	11.72	0.00
qoprualg	qofpg	9.42	0.00
dixsasam	pojju	7.98	0.03
ggpagrom	ggmer	5.95	0.01
mtpmafel	mtgfa	1.17	0.06
kixmagre	poxlp	0.85	0.00
sckwankm	waars	0.14	0.00
qfxaldad	qflp	0.10	0.00
pobmelat	arinadm	0.10	0.00
povracoe	pomps	0.02	0.00

Table 2: Calculated time and waiting time in days of the groups.

GROUP	Calculated Days	Waiting Time
polymat	15083.80	0.11
qjfg	7997.90	1.50
potmb	5790.07	0.05
poahh	4063.61	0.62
pomps	3790.84	0.03
nanogune	2886.03	0.06
gbdga	523.92	0.02
qofcm	431.74	0.01
pojju	415.58	0.02
poxlp	391.86	0.08
qocpn	260.79	0.00
kirpp	86.57	0.00
vcnor	68.98	0.07
qfila	18.84	0.00
arinadm	16.83	0.00
qofpg	9.42	0.00
ggmer	5.95	0.01
mtgfa	1.17	0.06
waars	0.14	0.00
qflp	0.10	0.00

## Arina Data Storage Top Users

In the following graph we plot the users having more data in Arina in the last month. If you appear in this graph, we strongly encourage you to reduce your data in Arina.

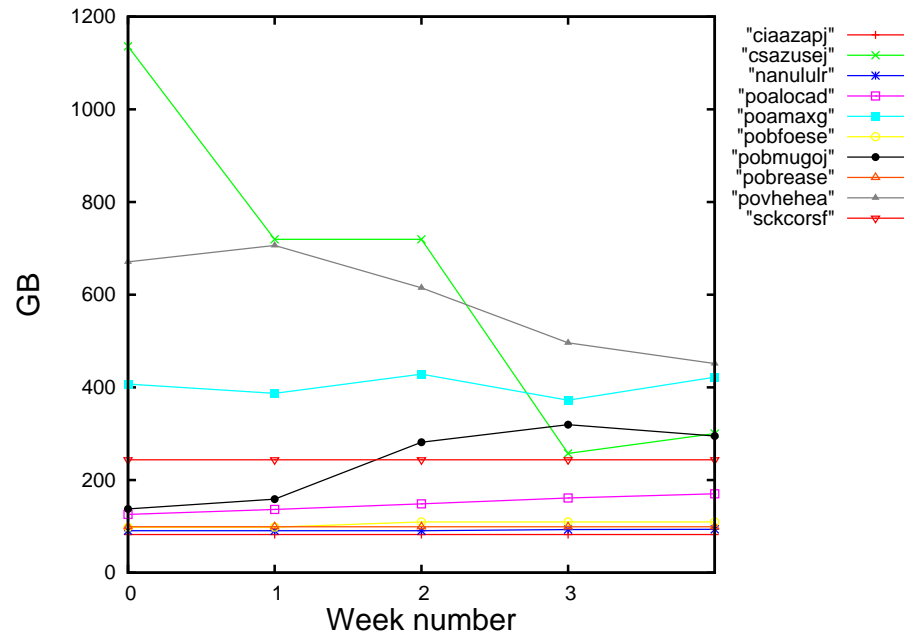


Figure 2: Storage evolution in the last month in GB.

## Péndulo

This month computing days where used in **Péndulo** and the the average use of the cluster was %. Since the first of December computing days where used and the the average use of the cluster was %. The figure shows the usage of Péndulo along the month. In the first table the usage of each user is shown. The third column indicates all the time each user has used for calculation during this month. The fourth column shows the average time that each job was waiting before the it started running, in days units. In the second table, the same data as in table 1 collected by group is shown.

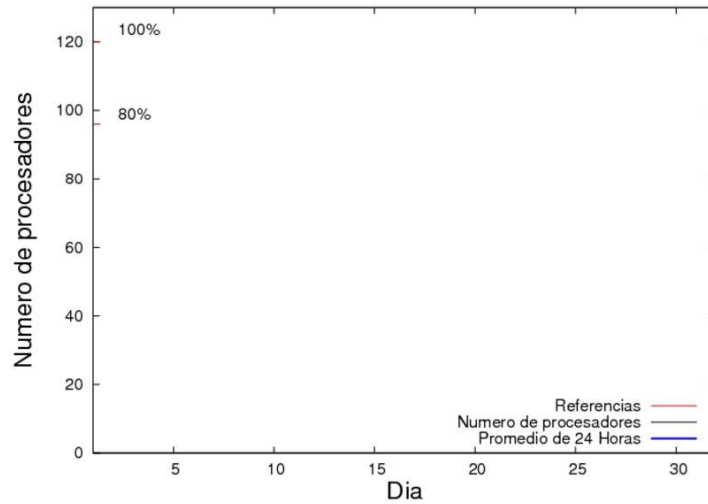


Figure 3: Cluster use. The blue line is a 24 hours average.

Table 3: Calculated time and waiting time in days of the users.

USER	GROUP	Calculated Days	Waiting Time
------	-------	-----------------	--------------

Table 4: Calculated time and waiting time in days of the groups.

GROUP	Calculated Days	Waiting Time
-------	-----------------	--------------