

Estadistics for August/2014

September 1, 2014

Arina

In this brief document we show the usage of arina during August. This month 29609 computing days where used and the the average use of the cluster was 76 %. Since the first of December 326834 computing days where used and the the average use of the Arina cluster was 92 %. The figure shows the usage of Arina along the month. In the first table the usage of each user is shown. The third column indicates all the time each user has used for calculation during this month. The fourth column shows the average time that each job was waiting before the it started running, in days units. In the second table, the same data as in table 1 collected by group is shown.

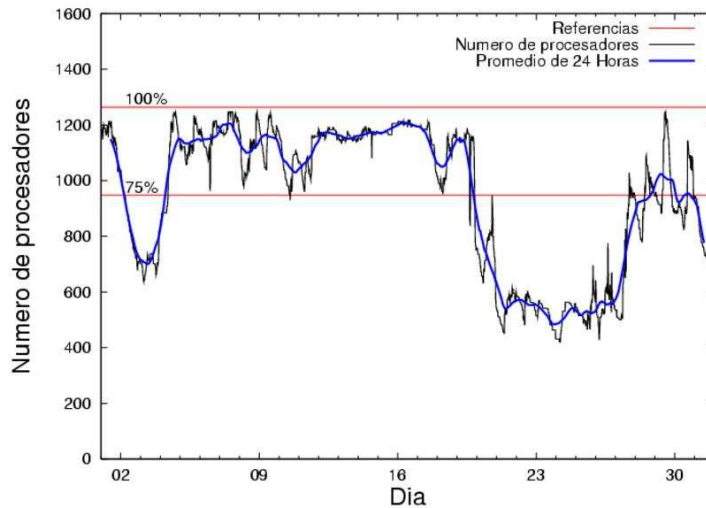


Figure 1: Cluster use. The blue line is a 24 hours average.

Table 1: Calculated time and waiting time in days of the users.

USER	GROUP	Calculated Days	Waiting Time
csazusej	nanogune	8479.37	0.24
povhehea	poahh	6104.83	0.15
povrucif	polymat	2795.06	0.01
pobfoese	poxlp	2390.53	0.79
sckcorsf	nanogune	1098.75	1.66
juranga004	potmb	981.05	0.00
qopgobee	qocpn	923.60	0.01
povwawaj	pojju	860.53	0.75
ciaazapj	poxlp	817.62	0.10
pobrease	pojju	795.66	0.03
pobmugoj	pomps	716.08	0.03
pobinini	poxlp	663.96	0.00
kixsasal	pojju	647.06	0.08
qovzaxxr	qorzz	604.03	0.15
favcopee	qfjfg	533.34	0.23
kibderua	qofcm	416.97	0.01
qoaarecl	qofcm	173.20	0.01
sgkluqun	poxlp	144.02	0.00
nanululr	nanogune	95.89	0.00
poblauro	poxlp	85.57	0.08
kibmeheg	pojju	76.33	0.01
kixbebej	poxlp	60.47	0.00
gbpaljod	gbmzg	56.79	0.00
pobgrgrs	pomps	47.55	0.00
bavfepem	pojju	18.45	0.01
pobmabej	potmb	13.79	0.00
mapalmau	qtftp	4.26	0.01
sckwankm	waars	2.19	0.00
acplaing	jiads	2.15	0.23

Table 2: Calculated time and waiting time in days of the groups.

GROUP	Calculated Days	Waiting Time
nanogune	9674.01	0.24
poahh	6104.83	0.15
poxlp	4162.16	0.06
polymat	2795.06	0.01
pojju	2398.04	0.12
potmb	994.84	0.00
qocpn	923.60	0.01
pomps	763.62	0.03
qorzz	604.03	0.15
qofcm	590.17	0.01
qjfg	533.34	0.23
gbmgg	56.79	0.00
qtftp	4.26	0.01
waars	2.19	0.00
jiads	2.15	0.23

Arina Data Storage Top Users

In the following graph we plot the users having more data in Arina in the last month. If you appear in this graph, we strongly encourage you to reduce your data in Arina.

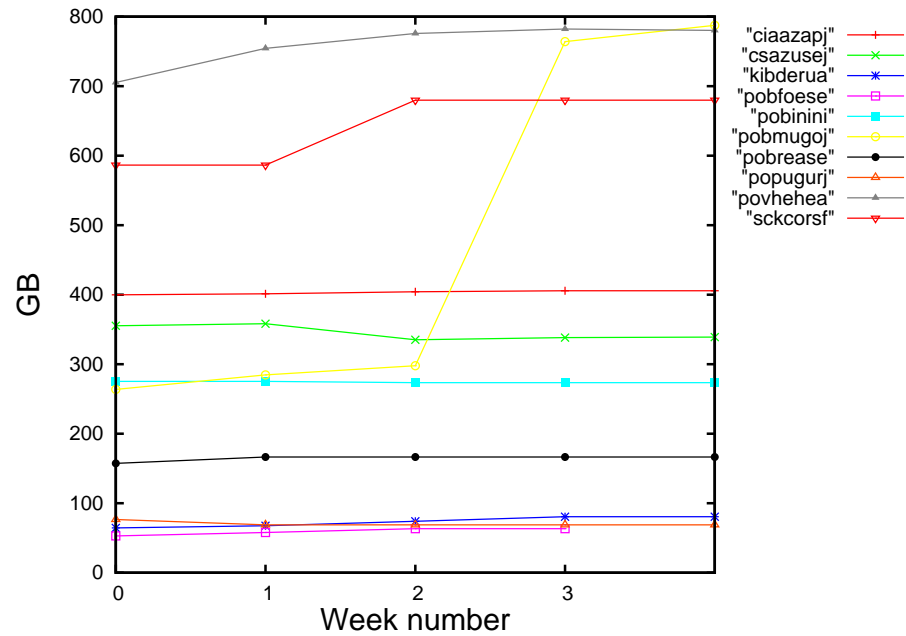


Figure 2: Storage evolution in the last month in GB.

Péndulo

This month 87 computing days were used in **Péndulo** and the the average use of the cluster was 4 %. Since the first of December 5296 computing days were used and the the average use of the cluster was 23 %. The figure shows the usage of Péndulo along the month. In the first table the usage of each user is shown. The third column indicates all the time each user has used for calculation during this month. The fourth column shows the average time that each job was waiting before the it started running, in days units. In the second table, the same data as in table 1 collected by group is shown.

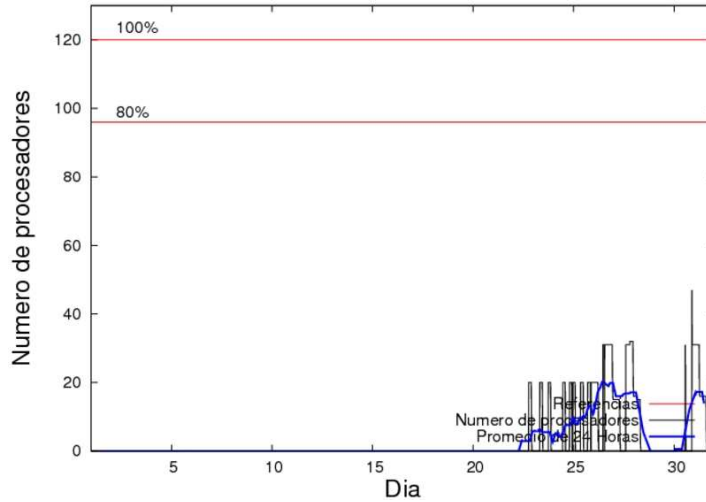


Figure 3: Cluster use. The blue line is a 24 hours average.

Table 3: Calculated time and waiting time in days of the users.

USER	GROUP	Calculated Days	Waiting Time
mtpmafel	mtgfa	87.37	0.05

Table 4: Calculated time and waiting time in days of the groups.

GROUP	Calculated Days	Waiting Time
mtgfa	87.37	0.05