

# Estadistics for August/2013

September 1, 2013

## Arina

In this brief document we show the usage of arina during August. This month 30096 computing days were used and the the average use of the cluster was 72 %. Since the first of December 293507 computing days were used and the the average use of the Arina cluster was 79 %. The figure shows the usage of Arina along the month. In the first table the usage of each user is shown. The third column indicates all the time each user has used for calculation during this month. The fourth column shows the average time that each job was waiting before the it started running, in days units. In the second table, the same data as in table 1 collected by group is shown.

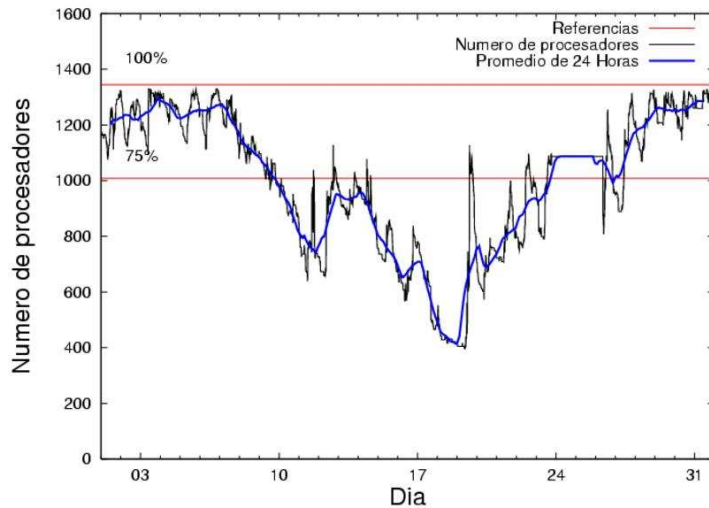


Figure 1: Cluster use. The blue line is a 24 hours average.

Table 1: Calculated time and waiting time in days of the users.

USER	GROUP	Calculated Days	Waiting Time
povhehea	poahh	13266.81	0.95
scpzuola	qorzz	3569.14	0.66
ciaazapj	poxlp	2101.80	0.07
popugurj	pojuu	2001.83	0.33
pobmugoj	pojuu	1049.82	0.24
povrucif	polymat	814.79	0.05
pobrease	potss	703.85	0.18
qobconde	qofcm	633.65	0.12
sckcorsf	nanogune	563.76	0.13
qoparaya	qofcm	551.41	0.03
pobgrgrs	pojuu	510.06	0.01
kibderua	qofcm	494.67	0.02
quxlegoa	qfjfg	419.80	0.27
sgkluqun	pojuu	384.00	0.20
pobcacad	pojuu	375.58	0.00
kibmeheg	pojuu	318.20	0.57
qoaarecl	qofcm	294.01	0.01
csazusej	nanogune	291.72	0.03
bckmimoj	qfjfg	289.80	0.03
quxbabai	qfjfg	188.08	0.03
pobinini	pojuu	142.94	0.02
juranga004	potmb	138.87	0.03
poalolog	poxlp	137.87	0.00
pobmelat	arinadm	129.57	0.01
qopcomof	qofcm	120.34	0.03
kixsasal	pojuu	105.83	0.03
qovzaxxr	qorzz	103.02	0.12
qopgobee	qocpn	92.11	0.02
webogare	arinadm	58.61	0.04
bixcobum	gbdga	55.16	0.02
qfploarf	qfila	53.72	0.03
mapalmau	qtftp	33.62	0.47
favcopee	qfjfg	30.48	0.01
povwawaj	pojuu	23.70	0.02
fabusgui	qfjfg	17.17	0.00
poplopex	pojuu	16.56	0.05
ekpvabaa	ekjgm	13.48	0.09
mtpmafel	mtgfa	4.10	0.01
cixesesb	poxlp	3.20	0.00
gbpaljod	gbmagg	2.18	0.10
nabzezem	nanogune	2.09	0.00
mapgazug	maegv	0.96	0.03
inpleibf	infi	0.51	0.07
povrucif	poxlp	0.26	0.00
qfxaldad	qflp	0.00	0.04

Table 2: Calculated time and waiting time in days of the groups.

GROUP	Calculated Days	Waiting Time
poahh	13266.81	0.95
pojju	4928.52	0.19
qorzz	3672.16	0.66
poxlp	2243.14	0.04
qofcm	2094.09	0.04
qjfg	945.32	0.04
nanogune	857.56	0.11
polymat	814.79	0.05
potss	703.85	0.18
arinadm	188.18	0.03
potmb	138.87	0.03
qocpn	92.11	0.02
gbdga	55.16	0.02
qfila	53.72	0.03
qtftp	33.62	0.47
ekjgm	13.48	0.09
mtgfa	4.10	0.01
gbmvg	2.18	0.10
maegv	0.96	0.03
infl	0.51	0.07
qflp	0.00	0.04

## Arina Data Storage Top Users

In the following graph we plot the users having more data in Arina in the last month. If you appear in this graph, we strongly encourage you to reduce your data in Arina.

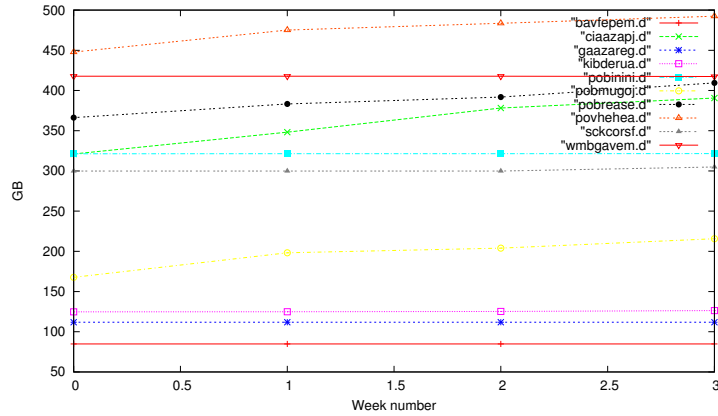


Figure 2: Storage evolution in the last month (in GB).

## Péndulo

This month 2 computing days were used in **Péndulo** and the the average use of the cluster was 0 %. Since the first of December 1504 computing days were used and the the average use of the cluster was 7 %. The figure shows the usage of Péndulo along the month. In the first table the usage of each user is shown. The third column indicates all the time each user has used for calculation during this month. The fourth column shows the average time that each job was waiting before the it started running, in days units. In the second table, the same data as in table 1 collected by group is shown.

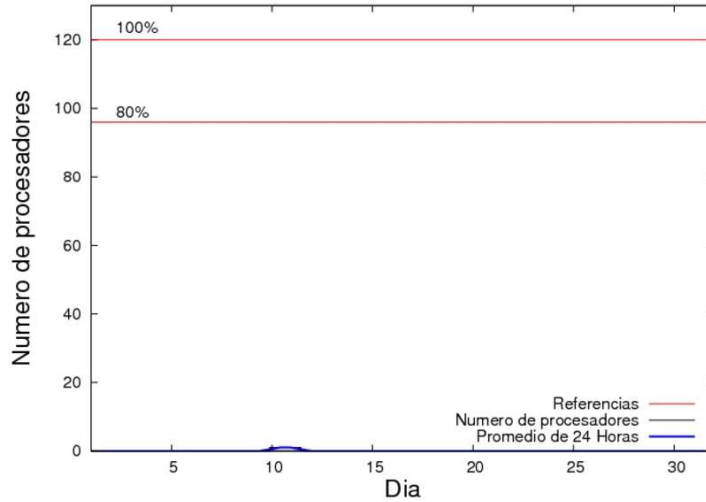


Figure 3: Cluster use. The blue line is a 24 hours average.

Table 3: Calculated time and waiting time in days of the users.

USER	GROUP	Calculated Days	Waiting Time
mtpmafel	mtgfa	1.56	0.24

Table 4: Calculated time and waiting time in days of the groups.

GROUP	Calculated Days	Waiting Time
mtgfa	1.56	0.24