

# Estadistics for August/2012

September 6, 2012

## Arina

In this brief document we show the usage of arina during August. This month 33635 computing days were used and the the average use of the cluster was 78 %. Since the first of December 280753 computing days were used and the the average use of the Arina cluster was 74 %. The figure shows the usage of Arina along the month. In the first table the usage of each user is shown. The third column indicates all the time each user has used for calculation during this month. The fourth column shows the average time that each job was waiting before the it started running, in days units. In the second table, the same data as in table 1 collected by group is shown.

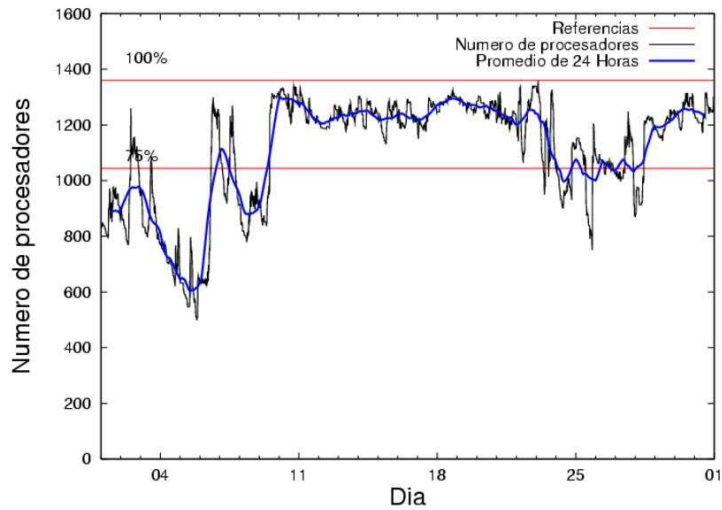


Figure 1: Cluster use. The blue line is a 24 hours average.

Table 1: Calculated time and waiting time in days of the users.

USER	GROUP	Calculated Days	Waiting Time
sckcorsf	nanogune	6205.53	0.17
scpzuola	qorzz	3894.93	1.95
favcopee	qfjfg	3728.88	0.22
ciaazapj	poxlp	3592.34	0.09
povhehea	poahh	3186.64	0.43
pmarkaide001	ggmer	2232.94	0.49
kibpapaa	qorzz	1492.18	0.28
pobrease	potss	1431.80	0.43
pobmugoj	pojuu	1023.82	0.01
wmbgavem	waets	871.27	0.10
qopgobee	qocpn	865.18	0.05
povwawaj	pojuu	741.52	0.09
pobgrgrs	pojuu	715.62	0.01
popugurj	pojuu	549.40	0.07
pobinini	pojuu	540.28	0.02
nabzezem	nanogune	478.07	0.24
kibderua	qofcm	384.69	0.12
kibmeheg	pojuu	368.93	0.03
iapgarue	iaegr	323.34	0.27
qoaarecl	qofcm	209.01	0.00
qfploarf	qfila	169.80	0.07
qobconde	qofcm	167.38	0.19
qopcomof	qofcm	133.03	0.02
pobrease	pojuu	99.02	0.05
cixesesb	poxlp	98.81	0.16
povrucif	poxlp	49.05	0.00
quxbabai	qfjfg	43.12	0.00
qobmimuj	lgsgi	25.77	0.05
qfpmamoh	qfila	21.26	0.19
bcpitaia	bcizb	14.21	0.00
bckmimoj	qfjfg	4.56	0.00
webogare	arinadm	3.61	0.00
wabpepaa	waars	3.05	0.03
pobmelat	arinadm	0.42	0.00
pobmabej	pojuu	0.26	0.00
wuppobam	wuebp	0.19	0.00
jtpanlod	jtjob	0.19	0.11
qfptogaa	qflp	0.13	0.00
bcklogoi	infi	0.00	0.04

Table 2: Calculated time and waiting time in days of the groups.

GROUP	Calculated Days	Waiting Time
nanogune	6683.60	0.22
qorzz	5387.11	1.20
pojju	4038.85	0.05
qjfg	3776.57	0.18
poxlp	3740.20	0.08
poahh	3186.64	0.43
ggmer	2232.94	0.49
potss	1431.80	0.43
qofcm	894.11	0.06
waets	871.27	0.10
qocpn	865.18	0.05
iaegr	323.34	0.27
qfila	191.06	0.18
lgsgi	25.77	0.05
bcizb	14.21	0.00
arinadm	4.03	0.00
waars	3.05	0.03
wuebp	0.19	0.00
jtjob	0.19	0.11
qflp	0.13	0.00
infi	0.00	0.04

## Pendolo

This month 147 computing days were used in **Pendolo** and the the average use of the cluster was 7 %. Since the first of December 1254 computing days were used and the the average use of the cluster was 5 %. The figure shows the usage of Pendolo along the month. In the first table the usage of each user is shown. The third column indicates all the time each user has used for calculation during this month. The fourth column shows the average time that each job was waiting before the it started running, in days units. In the second table, the same data as in table 1 collected by group is shown.

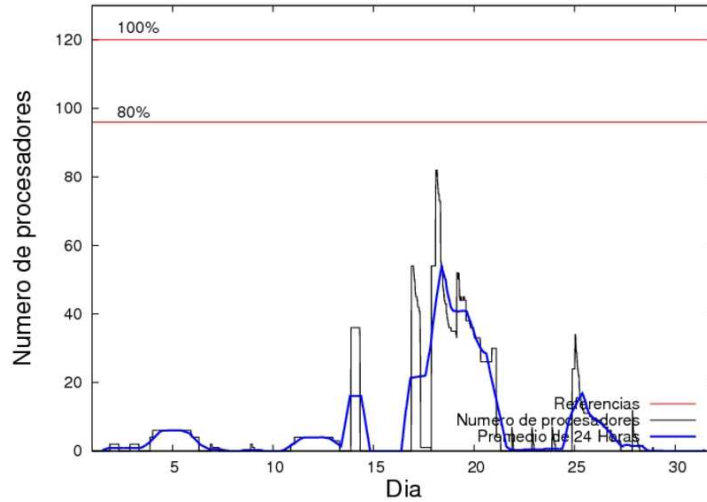


Figure 2: Cluster use. The blue line is a 24 hours average.

Table 3: Calculated time and waiting time in days of the users.

USER	GROUP	Calculated Days	Waiting Time
jtpanlod	jtjob	144.32	2.68
mtpmafel	mtgfa	2.42	0.38

Table 4: Calculated time and waiting time in days of the groups.

GROUP	Calculated Days	Waiting Time
jtjob	144.32	2.68
mtgfa	2.42	0.38

## Ikerbasque machine

The service has access to 208 xeon cores in this machine, which are older than Arina's ones. The codes of only few big users are maintained there to optimize the maintenance time. This month 5637 computing days were used in **Ikerbasque** machine and the the average use of the cluster was 87 %. Since the first of December 25657 computing days were used and the the average use of the cluster was 44 %. In the first table the usage of each user is shown. The third column indicates all the time each user has used for calculation during this month. The fourth column shows the average time that each job was waiting before the it started running, in days units. In the second table, the same data as in table 1 collected by group is shown.

Table 5: Calculated time and waiting time in days of the users.

USER	GROUP	Calculated Days	Waiting Time
scpzuola	qorzz	2508.99	0.00
pmarkaide001	ggmer	2396.65	0.00
pobmabej	pojuu	456.29	0.00
kibpapaa	qorzz	275.38	0.00

Table 6: Calculated time and waiting time in days of the groups.

GROUP	Calculated Days	Waiting Time
qorzz	2784.37	0.00
ggmer	2396.65	0.00
pojuu	456.29	0.00