

# Estatistics for August/2011

September 16, 2011

## Arina

In this brief document we show the usage of arina during August. This month 15434 computing days where used and the the average use of the cluster was 66 %. Since the first of December 157059 computing days where used and the the average use of the cluster was 76 %. The figure shows the usage of Arina along the month. In the first table the usage of each user is shown. The third column indicates all the time each user has used for calculation during this month. The fourth column shows the average time that each job was waiting before the it started running, in days units. In the second table, the same data as in table 1 collected by group is shown.

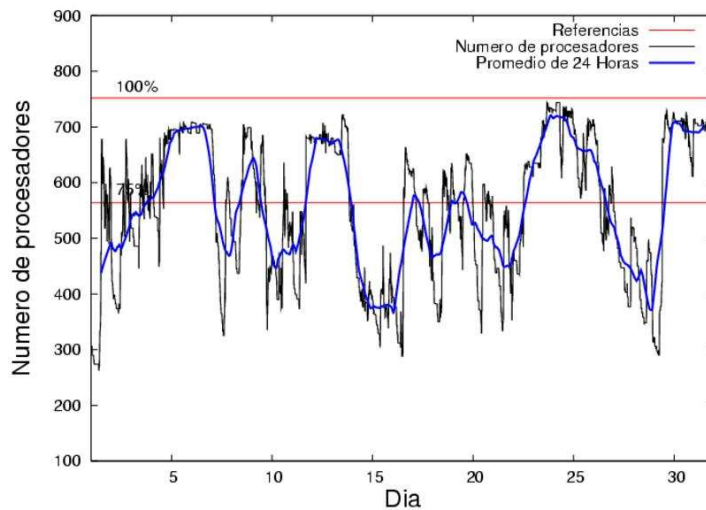


Figure 1: Cluster use. The blue line is a 24 hours average.

Table 1: Calculated time and waiting time in days of the users.

USER	GROUP	Calculated Days	Waiting Time
povhehea	poahh	4643.25	0.11
wmbgavem	waets	2789.01	0.09
pobrease	potss	2174.73	0.67
pobmugoj	pojoo	863.58	0.05
qopgobee	qocpn	759.40	0.05
waptctce	waets	746.14	0.03
pobgrgs	pojoo	707.63	0.04
favcopee	qjfg	496.71	0.45
pobmelat	arinadm	326.63	0.01
ciaazapj	poxlp	295.75	0.03
pobrease	pojoo	221.51	0.49
pobmabej	pojoo	196.57	0.05
scpzuola	qorzz	184.93	0.10
jipzasib	jieab	183.64	0.12
povwawaj	pojoo	143.13	0.03
popugurj	pojoo	133.63	0.01
bckmimoj	qjfg	133.33	0.02
povrucif	poxlp	120.09	0.06
webogare	arinadm	75.88	0.02
kibderua	qofcm	64.40	0.03
kivremey	qpjag	44.66	0.08
iapgarue	iaegr	39.19	0.01
quxlegoa	qjfg	20.89	0.03
cixesesb	poxlp	19.05	0.02
pobfoese	poxlp	18.22	0.16
kibmeheg	pojoo	17.03	0.03
quxbabai	qjfg	4.56	0.02
poblairo	poxlp	4.39	0.03
mapalmau	magps	2.30	0.04
qfptogaa	qflp	1.80	0.00
qfbloala	qfala	1.05	0.14
qfbbaprj	qfila	0.86	0.01
pobinini	pojoo	0.30	0.00

Table 2: Calculated time and waiting time in days of the groups.

GROUP	Calculated Days	Waiting Time
poahh	4643.25	0.11
waets	3535.14	0.06
pojuu	2283.39	0.14
potss	2174.73	0.67
qocpn	759.40	0.05
qfjfg	655.50	0.23
poxlp	457.50	0.06
arinadm	402.51	0.02
qorzz	184.93	0.10
jieab	183.64	0.12
qofcm	64.40	0.03
qpjag	44.66	0.08
iaegr	39.19	0.01
magps	2.30	0.04
qflp	1.80	0.00
qfala	1.05	0.14
qfila	0.86	0.01

## Pendolo

This month 3634 computing days were used in **Pendolo** and the the average use of the cluster was 16 %. Since the first of December computing days were used and the the average use of the cluster was %. The figure shows the usage of Pendolo along the month. In the first table the usage of each user is shown. The third column indicates all the time each user has used for calculation during this month. The fourth column shows the average time that each job was waiting before the it started running, in days units. In the second table, the same data as in table 1 collected by group is shown.

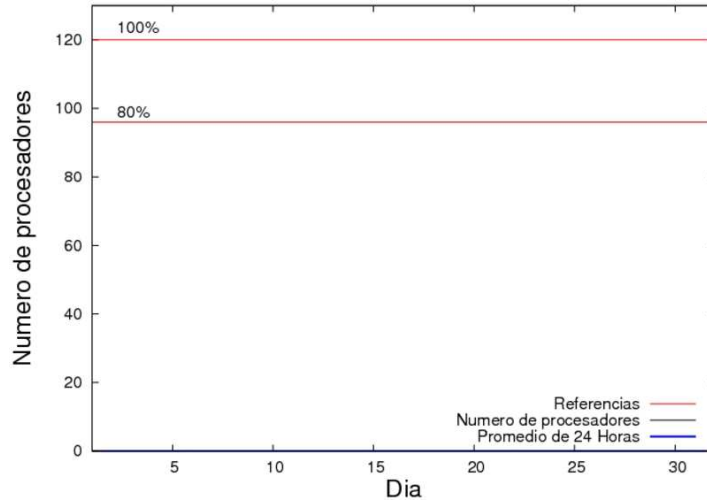


Figure 2: Cluster use. The blue line is a 24 hours average.

Table 3: Calculated time and waiting time in days of the users.

USER	GROUP	Calculated Days	Waiting Time
------	-------	-----------------	--------------

Table 4: Calculated time and waiting time in days of the groups.

GROUP	Calculated Days	Waiting Time
-------	-----------------	--------------

## Ikerbasque machine

The service has access to 206 xeon cores in this machine, which are older than Arina's ones. The codes of only few big users are maintained there to optimize the maintenance time. This month 1758 computing days were used in **Ikerbasque** machine and the the average use of the cluster was 27 %. Since the first of June 18775 computing days were used and the the average use of the cluster was 85 %. In the first table the usage of each user is shown. The third column indicates all the time each user has used for calculation during this month. The fourth column shows the average time that each job was waiting before the it started running, in days units. In the second table, the same data as in table 1 collected by group is shown.

Table 5: Calculated time and waiting time in days of the users.

USER	GROUP	Calculated Days	Waiting Time
povhehea	poahh	1625.00	0.17
scpzuola	qorzz	133.46	0.30

Table 6: Calculated time and waiting time in days of the groups.

GROUP	Calculated Days	Waiting Time
poahh	1625.00	0.17
qorzz	133.46	0.30