

# Estadistics for July/2018

August 1, 2018

## Arina

In this brief document we show the usage of arina during July. This month 98916 computing days where used and the the average use of the cluster was 86 %. Since the first of December 721697 computing days where used and the the average use of the Arina cluster was 80 %. The figure shows the usage of Arina along the month. In the first table the usage of each user is shown. The third column indicates all the time each user has used for calculation during this month. The fourth column shows the average time that each job was waiting before the it started running, in days units. In the second table, the same data as in table 1 collected by group is shown.

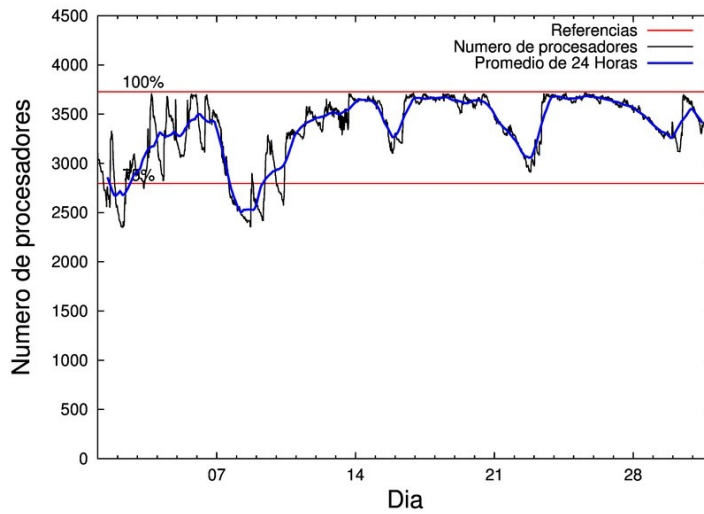


Figure 1: Cluster use. The blue line is a 24 hours average.

Table 1: Calculated time and waiting time in days of the users.

USER	GROUP	Calculated Days	Waiting Time
povhehea	poahh	15707.72	1.61
qovzaxxr	polymat	12678.44	0.26
povrucif	polymat	9898.13	0.72
popugurj	pojoo	7251.13	0.15
pobluluv	poxlp	6146.89	1.73
pobladej	poxlp	6112.66	0.54
poamaxg	polymat	4584.09	0.28
pobluluv	pomaster	4307.98	0.43
enbxilij	egune	2769.74	0.26
kiadadag	pojoo	2498.81	0.05
poasasab	polymat	2418.90	0.04
fabusgui	qfjfg	2267.97	0.51
pobrease	potmb	2169.90	0.05
favecvep	qfjfg	1910.90	0.24
pobmugoj	pomps	1886.83	0.02
poaganau	polymat	1647.58	0.62
qopgobee	qocpn	1529.47	0.02
pobgrgrs	pomps	1248.22	0.01
faacalea	qfjfg	1177.33	0.09
povpisim	pomps	976.39	0.00
quxlegoa	qfjfg	917.65	0.46
csazusej	nanogune	701.32	0.09
pobeieit	poxlp	586.09	0.03
poajejec	polymat	556.20	0.16
povwawaj	pojoo	518.72	0.23
poarloi	pojoo	515.68	1.58
qoapefuh	qocpn	476.09	0.02
poairurm	polymat	464.54	0.54
kibderua	qofcm	454.00	0.01
dixsasam	pojoo	398.04	0.05
quainbea	qfjfg	396.45	0.08
enxararo	egune	380.45	0.25
poarsai	poxlp	371.15	0.03
qfbloala	qfjfg	311.85	0.05
qobpamap	qocpn	298.68	0.00
qobzazag	qocpn	282.57	0.01
kiasomal	qocpn	272.18	0.01
qfpmamoh	qfila	217.26	0.11
ciazuulm	pojoo	215.20	0.10
poagafrm	pojoo	211.53	0.23
sckahnom	potmb	175.61	0.10
pobfoese	poxlp	128.61	0.08
unxloesg	potmb	121.56	0.14
impormaa	imaom	114.32	0.02
qfjbaprij	qfila	69.82	0.03
qfbleoni	qfjfg	68.97	0.02
quamearx	qfila	63.30	0.03

kixgrazr	potmb	63.04	0.00
poblacoj	pojuu	47.25	0.00
cixesgos	pojuu	47.21	0.00
qobsalae	qambm	42.42	0.00
poaszsze	poxlp	34.69	0.00
qopcomof	qofcm	31.81	0.00
qobconde	qofcm	28.77	0.00
wapgoesj	wakgg	23.94	0.04
kiaurbao	poxlp	22.75	0.06
pobmabej	potmb	19.95	0.00
scavinam	poemg	16.15	0.04
poaurura	poxlp	11.18	0.22
poaazago	potmb	9.88	0.08
qfpesmai	qfila	8.30	0.00
quxmarur	qfjfg	7.14	0.05
poalocad	polymat	7.05	0.00
enbzhzh	egune	5.70	0.08
poasibrd	poxlp	4.28	0.01
pobsisis	pomps	2.35	0.07
iqpagura	iqaa	2.06	0.00
faaatnaa	faraz	1.85	0.01
bgpmuhoi	bcnsc	0.24	0.01
bczabgab	casgi	0.23	0.00
kiateanm	qocpn	0.09	0.02
improagj	imfmg	0.08	0.00
povracoe	pomps	0.07	0.00
wuppobam	wuebp	0.06	0.00
anbgejin	anjbc	0.04	0.00
qoparaya	qofcm	0.01	0.00
poatealx	pojuu	0.01	0.00
scpridei	qofcm	0.00	0.00
popporiv	poxlp	0.00	0.00

---

Table 2: Calculated time and waiting time in days of the groups.

GROUP	Calculated Days	Waiting Time
polymat	32254.92	0.47
poahh	15707.72	1.61
poxlp	13418.30	0.37
pojoo	11703.57	0.17
qfjfg	7058.26	0.26
pomaster	4307.98	0.43
pomps	4113.87	0.02
egune	3155.89	0.25
qocpn	2859.08	0.01
potmb	2559.94	0.07
nanogune	701.32	0.09
qofcm	514.59	0.00
qfila	358.68	0.03
imaom	114.32	0.02
qambm	42.42	0.00
wakgg	23.94	0.04
poemg	16.15	0.04
iqaaau	2.06	0.00
faraz	1.85	0.01
bcnsc	0.24	0.01
casgi	0.23	0.00
imfmg	0.08	0.00
wuebp	0.06	0.00
anjbc	0.04	0.00

## Arina Data Storage Top Users

In the following graph we plot the users having more data in Arina in the last month. If you appear in this graph, we strongly encourage you to reduce your data in Arina.

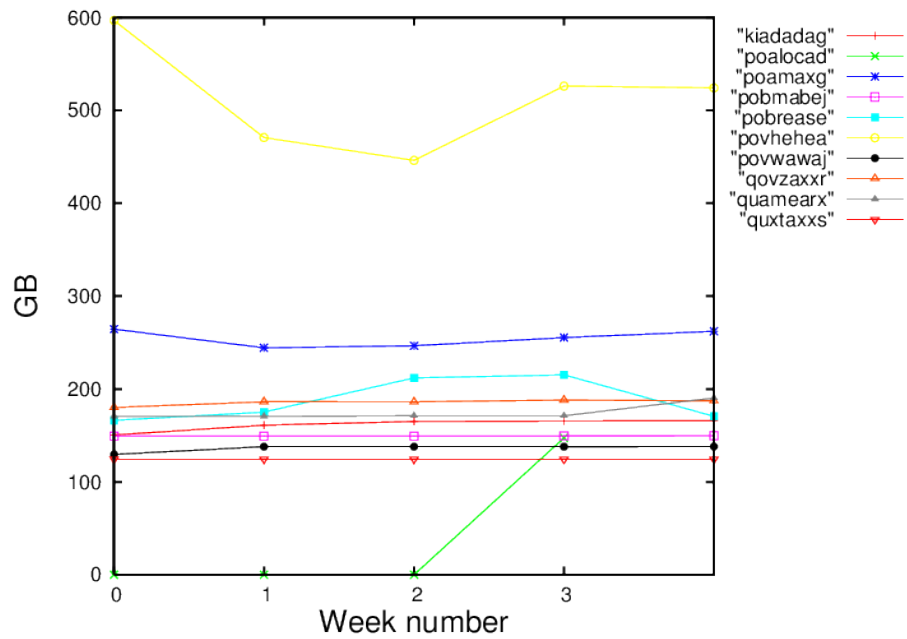


Figure 2: Storage evolution in the last month in GB.