

# Estadistics for July/2017

September 1, 2017

## Arina

In this brief document we show the usage of arina during July. This month 78727 computing days where used and the the average use of the cluster was 68 %. Since the first of December 458528 computing days where used and the the average use of the Arina cluster was 82 %. The figure shows the usage of Arina along the month. In the first table the usage of each user is shown. The third column indicates all the time each user has used for calculation during this month. The fourth column shows the average time that each job was waiting before the it started running, in days units. In the second table, the same data as in table 1 collected by group is shown.

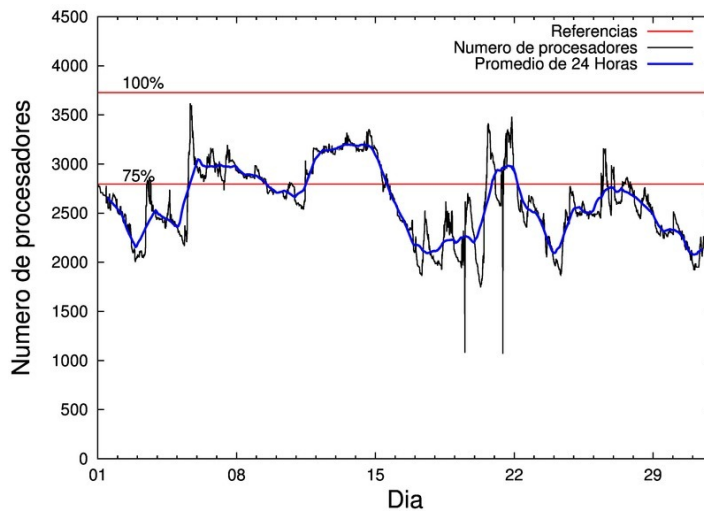


Figure 1: Cluster use. The blue line is a 24 hours average.

Table 1: Calculated time and waiting time in days of the users.

USER	GROUP	Calculated Days	Waiting Time
naagagaa	nanogune	23131.84	1.42
povhehea	poahh	8659.34	0.19
fabusgui	qfjfg	6041.54	0.38
povrucif	polymat	5351.24	0.16
kiadadag	pojuu	4000.69	0.13
povmieci	pojuu	3098.76	0.08
poamaxg	polymat	2954.58	0.10
qovzaxxr	polymat	2857.85	0.30
pobmabej	potmb	2739.74	0.01
enxcacaj	egune	1809.59	0.11
poanacuj	polymat	1706.61	0.10
poogrgrs	pomps	1683.19	0.06
enxararo	egune	1631.82	0.05
poalocad	polymat	1174.54	0.04
upetralanda001	wdaga	922.59	0.07
pobmugoj	pomps	817.67	0.02
povpisim	pomps	679.69	0.02
enblairo	egune	659.09	0.44
quvvalom	qfjfg	638.25	0.00
qopgobee	qocpn	599.10	0.02
quxtaxxs	polymat	532.19	0.03
wmpetali	wdaga	507.72	0.39
cianasas	pojuu	486.17	0.03
qobsalae	qambm	477.92	0.00
poamelat	arinadm	434.36	0.09
doxcarei	poemg	426.39	0.00
pobrease	potmb	322.71	0.02
cixesgos	pojuu	309.12	0.01
kiaolfeb	potss	305.98	0.04
dixsasam	pojuu	285.59	0.00
csazusej	nanogune	284.89	0.06
quaurhei	qfjfg	243.49	0.10
poajejec	polymat	236.16	0.02
poersai	poxlp	212.72	0.02
qfbleoni	qfjfg	198.53	0.11
ciatrnoa	pojuu	195.55	0.03
ciaanisi	pojuu	185.84	0.01
kixsasal	pojuu	178.00	0.00
qfpmamoh	qfila	161.71	0.04
poaazago	potmb	153.51	0.01
wabgaari	waaap	142.09	0.32
quxmarur	qfjfg	141.64	0.03
deaguura	nmage	127.28	0.36
kiasomal	qocpn	125.84	0.01
faaatnaa	faraz	110.33	0.02
scavinam	poemg	106.56	0.01
poasibrd	poxlp	101.32	0.01

poadoodj	potmb	98.14	0.00
vcpviirg	venor	74.11	0.37
kibderua	qofcm	71.49	0.00
scpridei	qofcm	62.32	0.00
fibblrem	waaap	46.03	0.01
ciairaim	poxlp	37.20	0.00
poarloi	pojoo	32.10	0.01
poagupej	pojoo	22.66	0.13
qfpmamav	qfila	21.42	0.00
pobsisis	pomps	19.14	0.02
kiaurbao	poxlp	13.41	0.10
faavzae	qfila	12.65	0.00
acplaing	jiads	11.10	0.09
quaasanm	qfjfg	10.76	0.00
qoaarecl	qofcm	10.41	0.00
quamasal	qfjfg	7.05	0.00
qfacaarm	qfila	6.31	0.00
wuppobam	wuebp	5.20	0.00
bgpmafea	bgjal	5.16	0.01
pobfoese	poxlp	4.74	0.00
wubcavaa	wuash	1.75	0.44
qoprualg	qofpg	1.70	0.00
bgpmuhoi	bcnsc	1.21	0.00
poblairo	poxlp	0.90	0.38
favecvep	qfjfg	0.10	0.00
kixgrazr	potmb	0.07	0.09
qfbbaprj	qfila	0.04	0.00
juranga004	potmb	0.04	0.00
nabsagrj	nanogune	0.00	0.00
jipiloga	jiads	0.00	0.31

---

Table 2: Calculated time and waiting time in days of the groups.

GROUP	Calculated Days	Waiting Time
nanogune	23416.73	1.09
polymat	14813.17	0.05
pojoo	8794.49	0.05
poahh	8659.34	0.19
qfjfg	7281.37	0.17
egune	4100.51	0.27
potmb	3314.21	0.01
pomps	3199.69	0.03
wdaga	1430.31	0.21
qocpn	724.94	0.02
poemg	532.95	0.01
qambm	477.92	0.00
arinadm	434.36	0.09
poxlp	370.28	0.03
potss	305.98	0.04
qfila	202.13	0.00
waaap	188.13	0.06
qofcm	144.22	0.00
nmage	127.28	0.36
faraz	110.33	0.02
vcnor	74.11	0.37
jiads	11.10	0.13
wuebp	5.20	0.00
bgjal	5.16	0.01
wuash	1.75	0.44
qofpg	1.70	0.00
bcnsc	1.21	0.00

## Arina Data Storage Top Users

In the following graph we plot the users having more data in Arina in the last month. If you appear in this graph, we strongly encourage you to reduce your data in Arina.

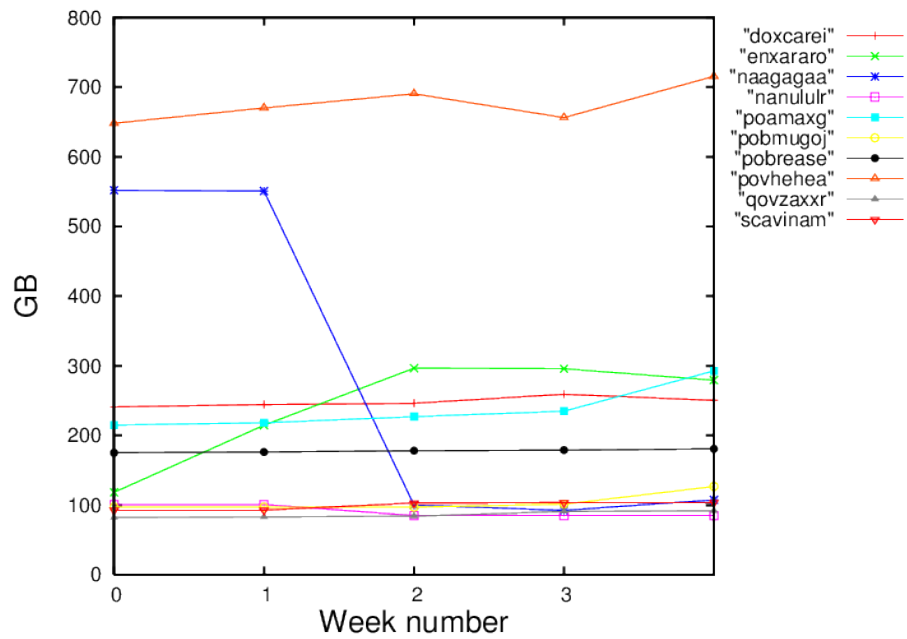


Figure 2: Storage evolution in the last month in GB.