

Estadistics for July/2016

August 9, 2016

Arina

In this brief document we show the usage of arina during July. This month 50806 computing days were used and the the average use of the cluster was 87 %. Since the first of December 411786 computing days were used and the the average use of the Arina cluster was 90 %. The figure shows the usage of Arina along the month. In the first table the usage of each user is shown. The third column indicates all the time each user has used for calculation during this month. The fourth column shows the average time that each job was waiting before the it started running, in days units. In the second table, the same data as in table 1 collected by group is shown.

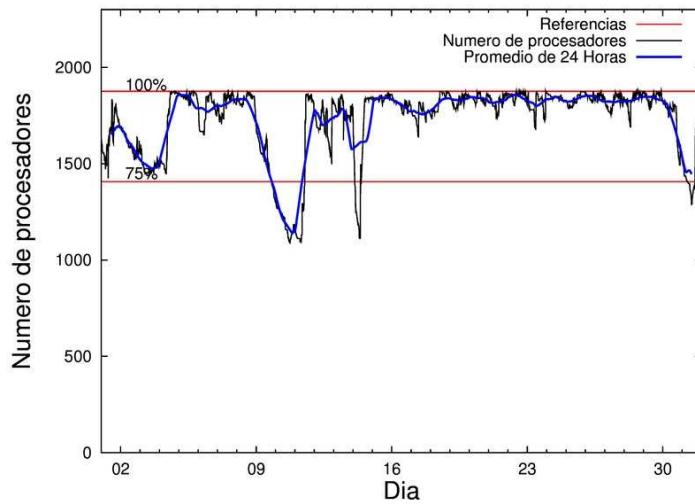


Figure 1: Cluster use. The blue line is a 24 hours average.

Table 1: Calculated time and waiting time in days of the users.

| USER | GROUP | Calculated Days | Waiting Time |
|------------|----------|-----------------|--------------|
| csazusej | nanogune | 8446.36 | 0.15 |
| poamaxg | polymat | 7184.23 | 3.06 |
| povhehea | poahh | 5459.53 | 7.25 |
| enxararo | egune | 4615.22 | 1.03 |
| quainbea | qfjfg | 2615.51 | 1.25 |
| bckmimoj | qfjfg | 2086.91 | 1.65 |
| juranga004 | potmb | 1920.90 | 0.39 |
| kixgrazr | potmb | 1880.55 | 0.32 |
| qfbgoroj | qfjfg | 1698.81 | 1.11 |
| enxcacaj | egune | 1427.39 | 0.67 |
| pobrease | potmb | 1152.99 | 0.85 |
| fabusgui | qfjfg | 1039.58 | 3.21 |
| kiasomal | qocpn | 1029.79 | 0.12 |
| kivpepor | kirpp | 1008.75 | 0.86 |
| poalocad | polymat | 1007.10 | 0.25 |
| faacalea | qfjfg | 945.37 | 1.20 |
| gbpbeseg | gbavm | 894.50 | 0.38 |
| quxmarur | qfjfg | 732.05 | 2.46 |
| povrucif | polymat | 667.20 | 0.22 |
| pobmugoj | pomps | 632.20 | 0.42 |
| qoaarecl | qofcm | 488.23 | 0.11 |
| sckwankm | waars | 310.57 | 0.04 |
| pobfoese | poxlp | 296.87 | 0.30 |
| kiadadag | pojuu | 293.23 | 0.76 |
| qopgobee | qocpn | 255.86 | 0.02 |
| qfpmamoh | qfila | 242.40 | 0.20 |
| poblairo | poxlp | 239.48 | 0.00 |
| pobcacad | pojuu | 229.20 | 0.39 |
| qovzaxxr | polymat | 199.62 | 0.22 |
| pobmelat | arinadm | 188.33 | 0.02 |
| ciaansap | pojuu | 181.49 | 0.19 |
| pobgrgrs | pomps | 167.66 | 0.49 |
| qoparaya | qofcm | 152.93 | 0.01 |
| kibderua | qofcm | 143.04 | 0.10 |
| navdesad | nanopeji | 143.00 | 0.40 |
| pobmabej | potmb | 138.62 | 0.04 |
| naagagaa | nanogune | 138.48 | 0.53 |
| doxcarei | poxlp | 118.05 | 0.04 |
| popugurj | pojuu | 67.89 | 1.10 |
| ciazuulm | pojuu | 62.76 | 0.05 |
| nanululr | nanogune | 52.17 | 0.43 |
| dixsasam | pojuu | 46.13 | 0.04 |
| poajejec | polymat | 45.30 | 0.05 |
| quaurhei | qfjfg | 36.81 | 0.56 |
| quvvalom | qfjfg | 35.80 | 1.66 |
| pobrease | polymat | 22.39 | 0.42 |
| wubcavaa | wuash | 21.56 | 0.15 |

| | | | |
|-----------|---------|-------|------|
| scavinam | poemg | 12.61 | 0.04 |
| qfparsaf | qfjfg | 9.46 | 0.10 |
| kixsasaf | pojoo | 9.26 | 0.27 |
| poplopex | pojoo | 6.15 | 0.01 |
| quapuoli | qocpn | 1.42 | 0.02 |
| paslobej | pajlb | 1.16 | 0.76 |
| poasobas | pojoo | 0.86 | 0.01 |
| poairurm | pojoo | 0.71 | 0.16 |
| bixbrdem | gbdga | 0.49 | 0.03 |
| ciaarmeii | pojoo | 0.34 | 0.02 |
| webogare | arinadm | 0.33 | 0.00 |
| poxtoesj | pomps | 0.09 | 0.09 |
| pobromam | pomps | 0.09 | 0.01 |
| poagafrm | pojoo | 0.01 | 0.01 |
| pobsisis | pomps | 0.00 | 0.26 |

Table 2: Calculated time and waiting time in days of the groups.

| GROUP | Calculated Days | Waiting Time |
|----------|-----------------|--------------|
| qfjfg | 9200.31 | 1.23 |
| polymat | 9125.84 | 0.38 |
| nanogune | 8637.01 | 0.25 |
| egune | 6042.61 | 0.77 |
| poahh | 5459.53 | 7.25 |
| potmb | 5093.06 | 0.42 |
| qocpn | 1287.07 | 0.06 |
| kirpp | 1008.75 | 0.86 |
| pojoo | 898.03 | 0.13 |
| gbavm | 894.50 | 0.38 |
| pomps | 800.04 | 0.34 |
| qofcm | 784.20 | 0.08 |
| poxlp | 654.40 | 0.25 |
| waars | 310.57 | 0.04 |
| qfila | 242.40 | 0.20 |
| arinadm | 188.65 | 0.02 |
| nanopeji | 143.00 | 0.40 |
| wuash | 21.56 | 0.15 |
| poemg | 12.61 | 0.04 |
| pajlb | 1.16 | 0.76 |
| gbdga | 0.49 | 0.03 |

Arina Data Storage Top Users

In the following graph we plot the users having more data in Arina in the last month. If you appear in this graph, we strongly encourage you to reduce your data in Arina.

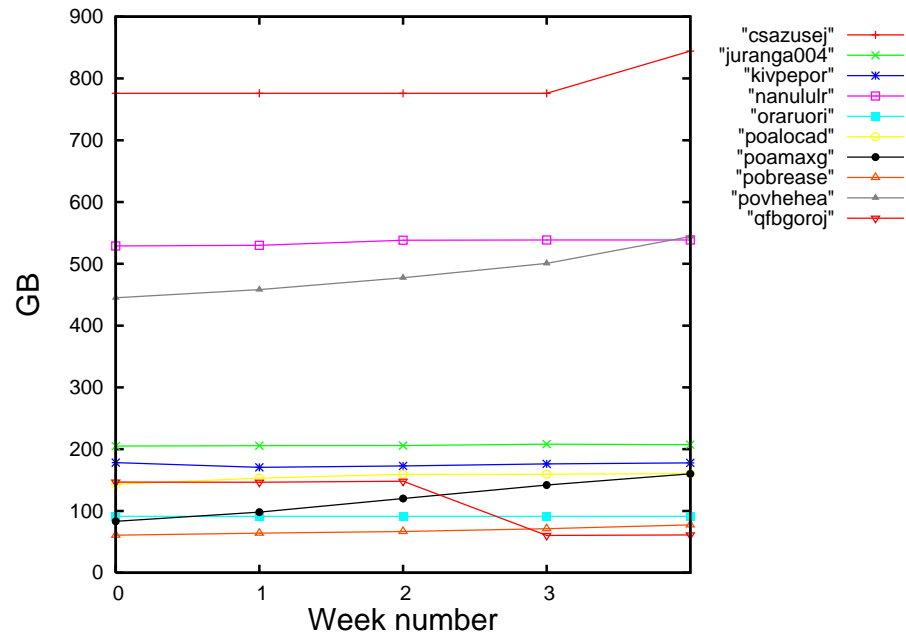


Figure 2: Storage evolution in the last month in GB.