

Estadistics for July/2015

August 1, 2015

Arina

In this brief document we show the usage of arina during July. This month 47198 computing days were used and the the average use of the cluster was 82 %. Since the first of December 389336 computing days were used and the the average use of the Arina cluster was 85 %. The figure shows the usage of Arina along the month. In the first table the usage of each user is shown. The third column indicates all the time each user has used for calculation during this month. The fourth column shows the average time that each job was waiting before the it started running, in days units. In the second table, the same data as in table 1 collected by group is shown.

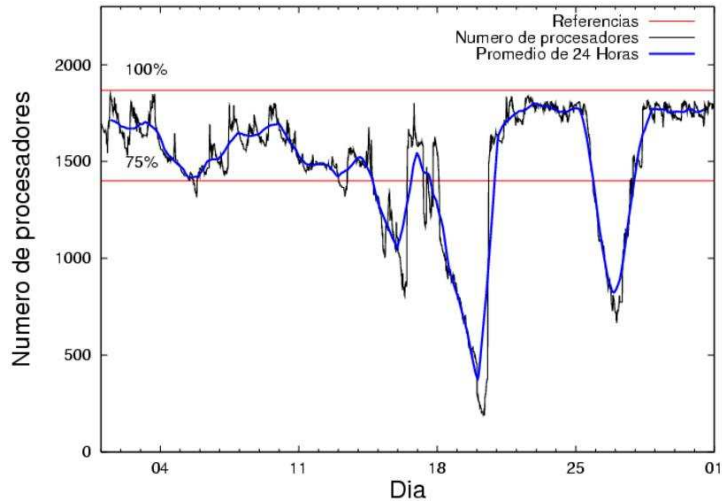


Figure 1: Cluster use. The blue line is a 24 hours average.

Table 1: Calculated time and waiting time in days of the users.

USER	GROUP	Calculated Days	Waiting Time
poamaxg	polymat	17195.66	2.99
povpisim	pomps	4992.31	0.22
fabusgui	qfjfg	2967.89	0.79
pmarkaide001	ggmer	2838.82	0.44
pobmabej	potmb	2221.77	0.04
povhehea	poahh	1949.17	0.65
kivpepor	kirpp	1608.75	0.53
pobrease	potmb	1369.12	0.24
juranga004	potmb	1342.72	0.03
qovzaxxr	polymat	1089.78	0.70
pobgrgrs	pomps	1084.78	0.02
pobmugoj	pomps	1046.35	0.01
csazusej	nanogune	917.77	0.36
poalocad	polymat	765.15	0.03
poanacuj	polymat	724.89	0.03
qfbgoroj	qfjfg	707.80	0.02
povrucif	polymat	538.97	0.04
qopgobee	qocpn	537.10	0.01
kibderua	qofcm	467.17	0.00
bckmimoj	qfjfg	459.83	0.13
pobromam	pomps	389.93	0.00
bixbrdem	gbdga	263.15	0.02
ciaazapj	poxlp	260.37	0.13
kixgrazr	potmb	233.75	0.05
anpgaetk	anjbc	163.57	0.07
kiasomal	qocpn	152.02	0.03
pobcacad	pojuu	123.86	0.09
mtpmafel	mtgfa	118.07	0.04
pobfoese	poxlp	111.81	0.00
vcposamj	vcnor	86.81	0.04
popugurj	pojuu	73.04	0.00
sckwankm	waars	64.62	0.00
qoprualg	qofpg	63.74	0.00
qobsalae	qambm	33.34	0.00
qopcomof	qofcm	32.19	0.00
mapalmau	qtftp	30.28	0.29
webogare	arinadm	25.04	0.01
weaaromam	weaga	24.79	0.01
quxlegoa	qfjfg	24.07	0.35
qfbleoni	qfjfg	24.00	1.33
kixsasal	pojuu	23.64	0.03
favcopee	qfjfg	13.94	0.21
qfpmamoh	qfila	11.32	0.00
pobinini	poxlp	8.24	0.00
favecvp	qfjfg	6.37	0.00
wubcavaa	wuash	3.05	0.04
qobmimuj	lgsgi	2.75	0.00

mapmemam	qtftp	1.50	0.15
poplopex	pojju	1.49	0.01
kixmagre	poxlp	0.61	0.00
weacoexl	weaga	0.44	0.00
qfparsaf	qfjfg	0.42	0.00
povracoe	pomps	0.09	0.00
qoparaya	qofcm	0.02	0.00
pobmelat	arinadm	0.01	0.00
nanululr	nanogune	0.01	0.01
kiadugat	poxlp	0.00	0.00

Table 2: Calculated time and waiting time in days of the groups.

GROUP	Calculated Days	Waiting Time
polymat	20314.45	0.88
pomps	7513.46	0.04
potmb	5167.35	0.05
qfjfg	4204.32	0.57
ggmer	2838.82	0.44
poahh	1949.17	0.65
kirpp	1608.75	0.53
nanogune	917.79	0.32
qocpn	689.12	0.01
qofcm	499.38	0.00
poxlp	381.03	0.02
gbdga	263.15	0.02
pojju	222.02	0.06
anjbc	163.57	0.07
mtgfa	118.07	0.04
vcnor	86.81	0.04
waars	64.62	0.00
qofpg	63.74	0.00
qambm	33.34	0.00
qtftp	31.77	0.29
weaga	25.23	0.00
arinadm	25.05	0.01
qfila	11.32	0.00
wuash	3.05	0.04
lgsgi	2.75	0.00

Arina Data Storage Top Users

In the following graph we plot the users having more data in Arina in the last month. If you appear in this graph, we strongly encourage you to reduce your data in Arina.

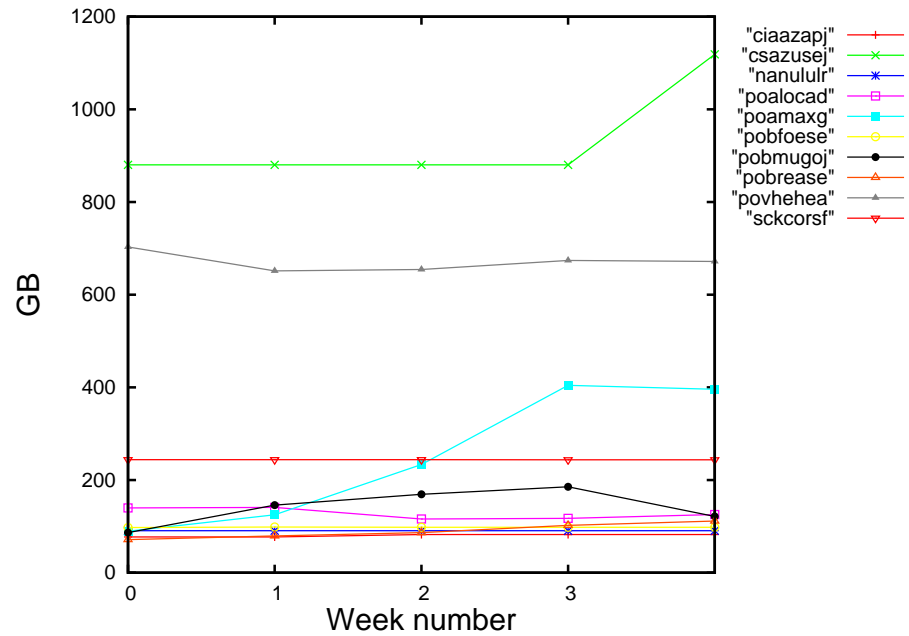


Figure 2: Storage evolution in the last month in GB.

Péndulo

This month computing days where used in **Péndulo** and the the average use of the cluster was %. Since the first of December computing days where used and the the average use of the cluster was %. The figure shows the usage of Péndulo along the month. In the first table the usage of each user is shown. The third column indicates all the time each user has used for calculation during this month. The fourth column shows the average time that each job was waiting before the it started running, in days units. In the second table, the same data as in table 1 collected by group is shown.

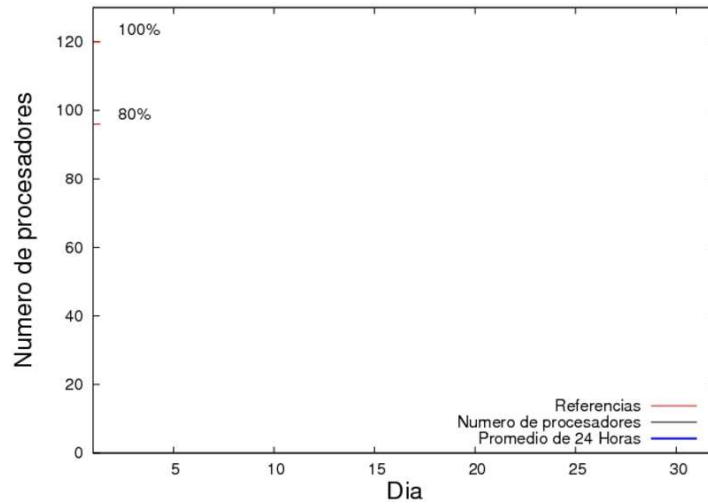


Figure 3: Cluster use. The blue line is a 24 hours average.

Table 3: Calculated time and waiting time in days of the users.

USER	GROUP	Calculated Days	Waiting Time
------	-------	-----------------	--------------

Table 4: Calculated time and waiting time in days of the groups.

GROUP	Calculated Days	Waiting Time
-------	-----------------	--------------