

Estadistics for July/2014

August 1, 2014

Arina

In this brief document we show the usage of arina during July. This month 34392 computing days were used and the the average use of the cluster was 88 %. Since the first of December 296931 computing days were used and the the average use of the Arina cluster was 94 %. The figure shows the usage of Arina along the month. In the first table the usage of each user is shown. The third column indicates all the time each user has used for calculation during this month. The fourth column shows the average time that each job was waiting before the it started running, in days units. In the second table, the same data as in table 1 collected by group is shown.

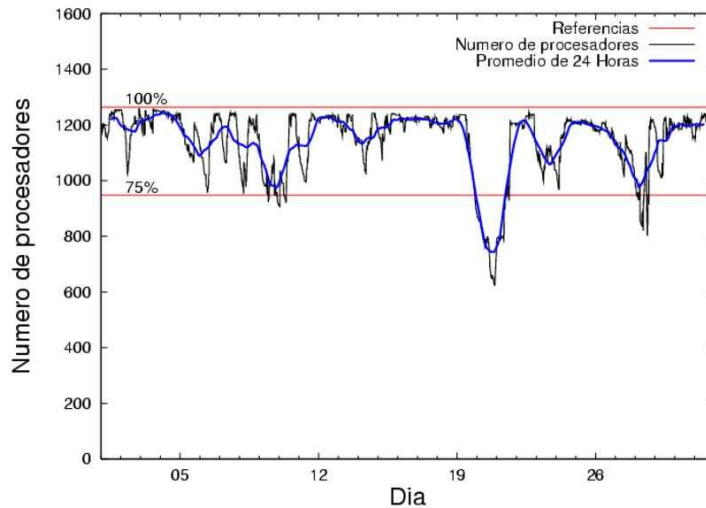


Figure 1: Cluster use. The blue line is a 24 hours average.

Table 1: Calculated time and waiting time in days of the users.

USER	GROUP	Calculated Days	Waiting Time
csazusej	nanogune	8364.60	0.94
sckcorsf	nanogune	5462.52	0.96
povwawaj	pojoo	4890.71	1.17
povrucif	polymat	2511.14	0.04
povhehea	poahh	1862.27	0.13
pobfoese	poxlp	1613.52	0.17
nanululr	nanogune	1582.96	0.63
pobinini	poxlp	931.61	0.06
kibderua	qofcm	907.90	0.03
qopgobee	qocpn	889.21	0.04
pobrease	pojoo	752.51	0.09
pobmugoj	pomps	622.03	0.03
ciaazapj	poxlp	434.51	0.14
qoaarecl	qofcm	413.92	0.03
poblairo	poxlp	404.65	0.18
poplopex	pojoo	366.65	0.27
kixsasal	pojoo	338.51	0.08
juranga004	potmb	331.03	0.04
sgkluqun	poxlp	306.71	0.20
kixbebej	poxlp	262.48	0.12
qopcomof	qofcm	249.62	0.05
qovzaxxr	qorzz	225.57	0.31
inpesalg	injbi	184.54	0.07
pobgrgrs	pomps	153.81	0.02
pobmabej	potmb	145.62	0.02
mapmemam	qtftp	57.00	0.14
acplaing	jiads	56.32	0.14
naaalcaa	nanopeji	31.47	0.03
bavfepem	pojoo	13.38	0.13
mtpmafel	mtgfa	9.73	0.00
qfbleoni	qfjfg	3.00	0.00
favecvep	qfjfg	2.56	0.00
inppebaa	qpjag	2.37	0.01
qfpesmai	qfila	2.01	0.00
qoprualg	qofpg	1.56	0.02
gbbsaeur	gbdga	1.36	0.69
quxlegoa	qfjfg	1.04	0.17
sckwankm	waars	1.03	0.04
fabusgui	qfjfg	0.55	0.00
bcpremae	bcdbu	0.48	0.03
favcopee	qfjfg	0.38	0.26
qfbgoroj	qfjfg	0.34	0.03
pobmelat	arinadm	0.03	0.46
wabpepaa	waars	0.00	0.00

Table 2: Calculated time and waiting time in days of the groups.

GROUP	Calculated Days	Waiting Time
nanogune	15410.08	0.92
pojuu	6361.77	0.51
poxlp	3953.47	0.13
polymat	2511.14	0.04
poahh	1862.27	0.13
qofcm	1571.44	0.03
qocpn	889.21	0.04
pomps	775.84	0.03
potmb	476.65	0.03
qorzz	225.57	0.31
injbi	184.54	0.07
qtftp	57.00	0.14
jiads	56.32	0.14
nanopeji	31.47	0.03
mtgfa	9.73	0.00
qjfg	7.87	0.07
qpjag	2.37	0.01
qfila	2.01	0.00
qofpg	1.56	0.02
gbdga	1.36	0.69
waars	1.04	0.03
bcdbu	0.48	0.03
arinadm	0.03	0.46

Arina Data Storage Top Users

In the following graph we plot the users having more data in Arina in the last month. If you appear in this graph, we strongly encourage you to reduce your data in Arina.

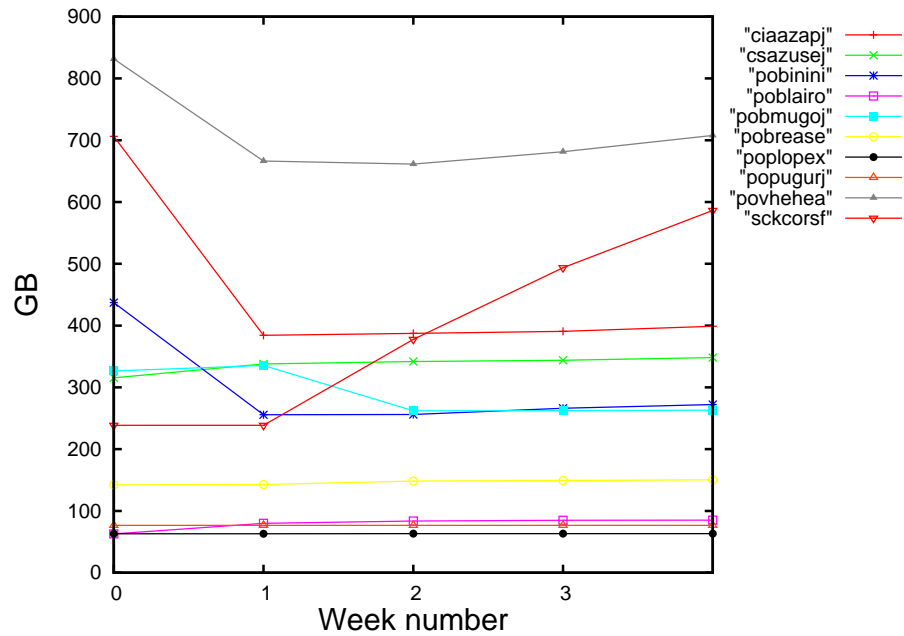


Figure 2: Storage evolution in the last month in GB.

Péndulo

This month 40 computing days were used in **Péndulo** and the the average use of the cluster was 2 %. Since the first of December 5215 computing days were used and the the average use of the cluster was 26 %. The figure shows the usage of Péndulo along the month. In the first table the usage of each user is shown. The third column indicates all the time each user has used for calculation during this month. The fourth column shows the average time that each job was waiting before the it started running, in days units. In the second table, the same data as in table 1 collected by group is shown.

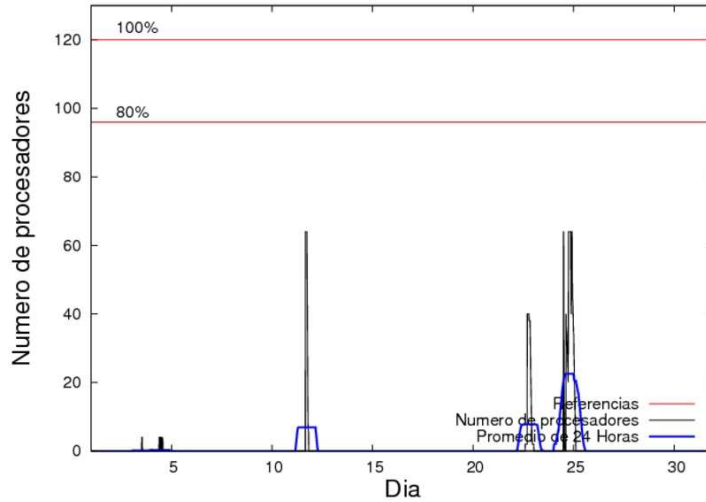


Figure 3: Cluster use. The blue line is a 24 hours average.

Table 3: Calculated time and waiting time in days of the users.

USER	GROUP	Calculated Days	Waiting Time
jtppragg	jtjob	39.88	0.04
impormaa	imaom	0.45	0.00

Table 4: Calculated time and waiting time in days of the groups.

GROUP	Calculated Days	Waiting Time
jtjob	39.88	0.04
imaom	0.45	0.00