

Estadistics for July/2013

August 1, 2013

Arina

In this brief document we show the usage of arina during July. This month 35887 computing days where used and the the average use of the cluster was 86 %. Since the first of December 262255 computing days where used and the the average use of the Arina cluster was 79 %. The figure shows the usage of Arina along the month. In the first table the usage of each user is shown. The third column indicates all the time each user has used for calculation during this month. The fourth column shows the average time that each job was waiting before the it started running, in days units. In the second table, the same data as in table 1 collected by group is shown.

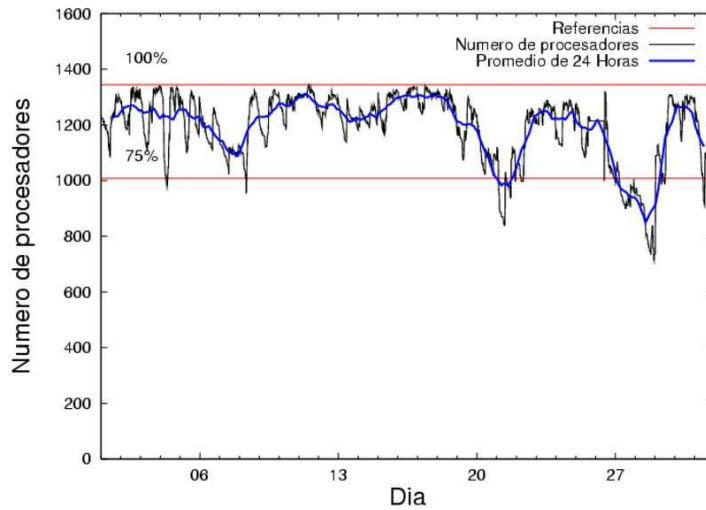


Figure 1: Cluster use. The blue line is a 24 hours average.

Table 1: Calculated time and waiting time in days of the users.

USER	GROUP	Calculated Days	Waiting Time
scpzuola	qorzz	6976.21	2.13
povhehea	poahh	5113.08	0.51
ieptapuj	ieflm	3159.18	0.59
popugurj	pojoo	2950.08	0.24
qovzaxxr	qorzz	2607.66	0.31
bckmimoj	qjfg	1720.18	0.35
kibderua	qofcm	1284.62	0.29
qobsalae	qofcm	1140.02	0.11
qobconde	qofcm	1101.17	0.06
ciaazapj	poxlp	1032.82	0.09
quxbabai	qjfg	891.05	0.06
juranga004	potmb	881.85	0.07
pobmugoj	pojoo	818.67	0.10
povrucif	polymat	720.36	0.05
qoparaya	qofcm	704.46	0.15
sgkluqun	pojoo	674.08	0.10
pobinini	pojoo	637.95	0.05
kibmeheg	pojoo	479.04	0.17
pobgrgrs	pojoo	447.26	0.06
qopgobee	qocpn	336.48	0.10
bixcobum	gbdga	330.50	0.28
favecvep	qjfg	244.59	0.27
csazusej	nanogune	212.31	0.08
pobrease	potss	208.51	0.37
quxlegoa	qjfg	188.77	0.42
qfpmamoh	qfila	159.84	0.10
fabusgui	qjfg	136.09	0.37
cixesesb	poxlp	99.85	0.19
povrucif	poxlp	88.29	0.09
pobrease	pojoo	84.46	0.41
kiaurbao	poxlp	82.88	0.07
mtpmafel	mtgfa	73.08	0.09
qfbloala	qfala	55.82	0.00
waxpoxxy	waars	53.28	0.13
inpleibf	infi	33.23	0.02
qfpesmai	qfila	25.06	0.02
qopcomof	qofcm	24.73	0.07
qoaarecl	qofcm	20.62	0.04
mapalmau	qtftp	19.43	0.09
qfbbaprj	qfila	17.95	0.03
ekpvebaa	ekjgm	16.43	0.13
wuppobam	wuebp	15.27	0.02
nabzezem	nanogune	8.77	0.01
poplopex	pojoo	6.22	0.00
kixbebej	poxlp	3.71	0.03
povwawaj	pojoo	2.85	0.05
favcopee	qjfg	2.59	0.02

bavfepem	pojuu	2.41	0.01
kixsasal	pojuu	0.64	0.00
mapmemam	qtftp	0.61	0.03
quaduree	qfila	0.60	0.27
pobmelat	arinadm	0.16	0.00
wapgoesj	wakgg	0.12	0.00
qobmimuj	lgsgi	0.07	0.09
qfxaldad	qflp	0.02	0.00
webogare	arinadm	0.01	0.00
qfploarf	qfila	0.01	0.01
pobcacad	pojuu	0.01	0.00
mapgazug	maegv	0.00	0.00

Table 2: Calculated time and waiting time in days of the groups.

GROUP	Calculated Days	Waiting Time
qorzz	9583.87	0.97
pojuu	6103.66	0.12
poahh	5113.08	0.51
qofcm	4275.61	0.22
qfjfg	3183.26	0.25
ieflm	3159.18	0.59
poxlp	1307.55	0.08
potmb	881.85	0.07
polymat	720.36	0.05
qocpn	336.48	0.10
gbdga	330.50	0.28
nanogune	221.08	0.01
potss	208.51	0.37
qfila	203.45	0.06
mtgfa	73.08	0.09
qfala	55.82	0.00
waars	53.28	0.13
infi	33.23	0.02
qtftp	20.04	0.08
ekjgm	16.43	0.13
wuebp	15.27	0.02
arinadm	0.17	0.00
wakgg	0.12	0.00
lgsgi	0.07	0.09
qflp	0.02	0.00
maegv	0.00	0.00

Arina Data Storage Top Users

In the following graph we plot the users having more data in Arina in the last month. If you appear in this graph, we strongly encourage you to reduce your data in Arina.

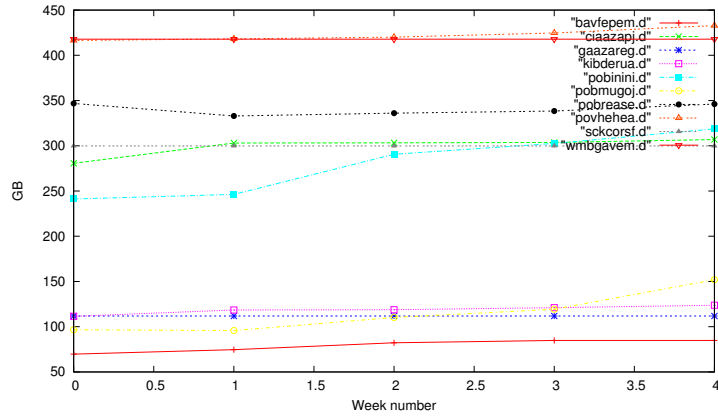


Figure 2: Storage evolution in the last month (in GB).

Péndulo

This month 57 computing days were used in **Péndulo** and the the average use of the cluster was 3 %. Since the first of December 1502 computing days were used and the the average use of the cluster was 7 %. The figure shows the usage of Péndulo along the month. In the first table the usage of each user is shown. The third column indicates all the time each user has used for calculation during this month. The fourth column shows the average time that each job was waiting before the it started running, in days units. In the second table, the same data as in table 1 collected by group is shown.

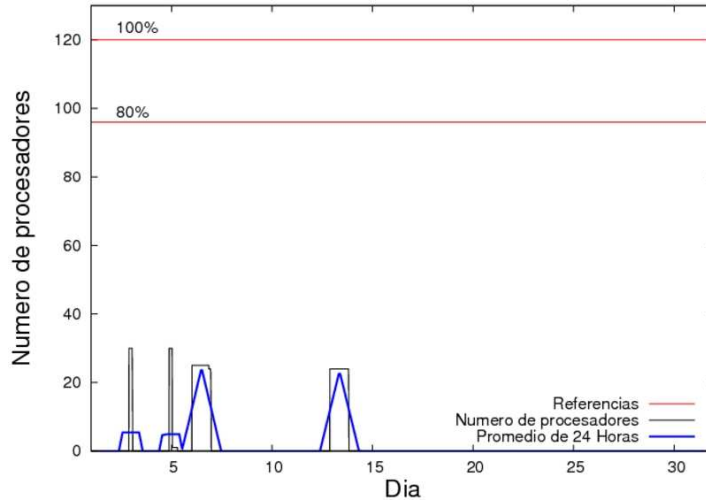


Figure 3: Cluster use. The blue line is a 24 hours average.

Table 3: Calculated time and waiting time in days of the users.

USER	GROUP	Calculated Days	Waiting Time
mtpmafel	mtgfa	57.02	0.16

Table 4: Calculated time and waiting time in days of the groups.

GROUP	Calculated Days	Waiting Time
mtgfa	57.02	0.16