

Estadistics for July/2012

September 6, 2012

Arina

In this brief document we show the usage of arina during July. This month 38724 computing days where used and the the average use of the cluster was 89 %. Since the first of December 247412 computing days where used and the the average use of the cluster was 73 %. The figure shows the usage of Arina along the month. In the first table the usage of each user is shown. The third column indicates all the time each user has used for calculation during this month. The fourth column shows the average time that each job was waiting before the it started running, in days units. In the second table, the same data as in table 1 collected by group is shown.

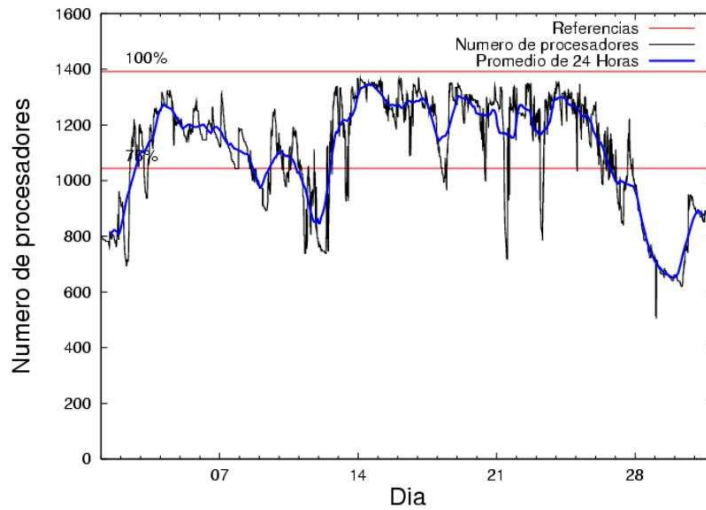


Figure 1: Cluster use. The blue line is a 24 hours average.

Table 1: Calculated time and waiting time in days of the users.

USER	GROUP	Calculated Days	Waiting Time
povhehea	poahh	11029.55	0.37
popugurj	pojuu	5059.25	0.20
sckcorsf	nanogune	3241.07	0.14
povwawaj	pojuu	2487.73	0.17
scpzuola	qorzz	1775.35	0.10
ciaazapj	poxlp	1488.79	0.18
pobgrgrs	pojuu	1190.29	0.00
kibpapaa	qorzz	1121.85	0.36
mapalmau	qtftp	1121.55	0.10
wapesnuv	wakgg	1116.22	0.04
pobrease	potss	1022.54	0.55
pobmugoj	pojuu	727.89	0.02
favcopee	qfjfg	707.08	0.46
poalolog	poxlp	698.42	2.62
mapmemam	qtftp	649.29	0.37
qoaarecl	qofcm	632.81	0.05
bckmimoj	qfjfg	617.96	0.02
pobinini	pojuu	553.11	0.06
kibmeheg	pojuu	499.27	0.05
quxbabai	qfjfg	402.26	0.01
qfpmamoh	qfila	352.81	0.06
pmarkaide001	ggmer	262.78	0.12
webogare	arinadm	232.79	0.02
qopgobee	qocpn	222.57	0.02
kibderua	qofcm	198.25	0.10
wmbgavem	waets	192.71	0.01
nabzezem	nanogune	190.05	0.01
povrucif	poxlp	153.06	0.05
quxlegoa	qfjfg	149.57	0.48
qfploarf	qfila	144.59	0.01
bcpremae	bcdbu	106.09	0.09
qoparaya	qofcm	90.24	0.01
iapgarue	iaegr	73.17	0.23
kixsasal	pojuu	67.82	0.03
meppesag	qtftp	45.78	0.09
wabpepaa	waars	22.70	0.16
qopcomof	qofcm	19.16	0.03
poblairo	poxlp	18.82	0.06
pobrease	pojuu	14.66	0.03
wuppobam	wuebp	8.52	0.00
qobmimuj	lgsgi	7.77	0.00
pobmelat	arinadm	2.74	0.02
cixesesb	poxlp	2.09	0.02
qfjbaprij	qfila	1.07	0.00
jtpanlod	jtjob	0.58	0.00
acblonou	ccjla	0.50	12.17
qfptogaa	qflp	0.16	0.01

csazusej	nanogune	0.11	0.01
bcklogoi	inffi	0.11	0.00
bbpbabia	bbabb	0.01	0.00

Table 2: Calculated time and waiting time in days of the groups.

GROUP	Calculated Days	Waiting Time
poahh	11029.55	0.37
pojoo	10600.03	0.19
nanogune	3431.23	0.02
qorzz	2897.20	0.20
poxlp	2361.18	0.15
qjfg	1876.88	0.30
qtftp	1816.62	0.25
wakgg	1116.22	0.04
potss	1022.54	0.55
qofcm	940.46	0.08
qfila	498.47	0.04
ggmer	262.78	0.12
arinadm	235.52	0.02
qocpn	222.57	0.02
waets	192.71	0.01
bedbu	106.09	0.09
iaegr	73.17	0.23
waars	22.70	0.16
wuebp	8.52	0.00
lgsgi	7.77	0.00
jtjob	0.58	0.00
cejla	0.50	12.17
qflp	0.16	0.01
inffi	0.11	0.00
bbabb	0.01	0.00

Pendolo

This month 434 computing days were used in **Pendolo** and the the average use of the cluster was 20 %. Since the first of December 1107 computing days were used and the the average use of the cluster was 5 %. The figure shows the usage of Pendolo along the month. In the first table the usage of each user is shown. The third column indicates all the time each user has used for calculation during this month. The fourth column shows the average time that each job was waiting before the it started running, in days units. In the second table, the same data as in table 1 collected by group is shown.

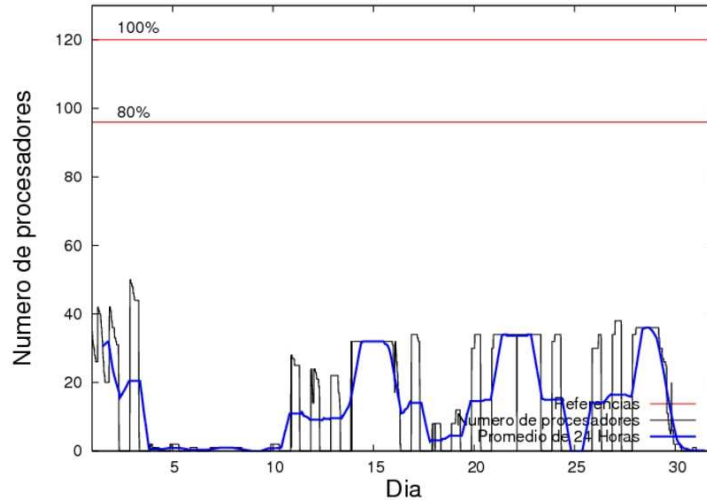


Figure 2: Cluster use. The blue line is a 24 hours average.

Table 3: Calculated time and waiting time in days of the users.

USER	GROUP	Calculated Days	Waiting Time
jtpanlod	jtjob	433.78	0.83
pobmelat	arinadm	0.00	0.42

Table 4: Calculated time and waiting time in days of the groups.

GROUP	Calculated Days	Waiting Time
jtjob	433.78	0.83
arinadm	0.00	0.42

Ikerbasque machine

The service has access to 208 xeon cores in this machine, which are older than Arina's ones. The codes of only few big users are maintained there to optimize the maintenance time. This month 1365 computing days were used in **Ikerbasque** machine and the the average use of the cluster was 21 %. Since the first of December 20020 computing days were used and the the average use of the cluster was 39 %. In the first table the usage of each user is shown. The third column indicates all the time each user has used for calculation during this month. The fourth column shows the average time that each job was waiting before the it started running, in days units. In the second table, the same data as in table 1 collected by group is shown.

Table 5: Calculated time and waiting time in days of the users.

USER	GROUP	Calculated Days	Waiting Time
pobmugoj	pojoo	892.65	0.00
pobmabej	pojoo	414.03	0.00
kibpapaa	qorzz	57.84	0.00
webogare	arinadm	0.22	0.00

Table 6: Calculated time and waiting time in days of the groups.

GROUP	Calculated Days	Waiting Time
pojoo	1306.68	0.00
qorzz	57.84	0.00
arinadm	0.22	0.00