

Estadistics for July/2011

August 12, 2011

Arina

In this brief document we show the usage of arina during July. This month 14813 computing days where used and the the average use of the cluster was 64 %. Since the first of December 142213 computing days where used and the the average use of the cluster was 78 %. The figure shows the usage of Arina along the month. In the first table the usage of each user is shown. The third column indicates all the time each user has used for calculation during this month. The fourth column shows the average time that each job was waiting before the it started running, in days units. In the second table, the same data as in table 1 collected by group is shown.

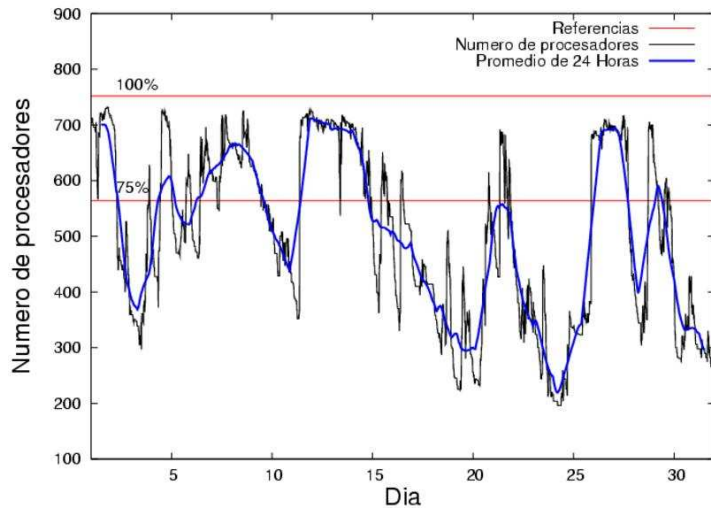


Figure 1: Cluster use. The blue line is a 24 hours average.

Table 1: Calculated time and waiting time in days of the users.

USER	GROUP	Calculated Days	Waiting Time
povhehea	poahh	3140.49	0.28
wmbgavem	waets	1992.69	0.12
pobrease	potss	1983.03	0.50
scpzuola	qorzz	1317.27	0.33
wabeslel	waars	1073.57	0.09
waptctce	waets	934.09	0.05
pobmugoj	pojuu	648.43	0.05
qfbleoni	qffca	433.46	0.04
ciaazapj	poxlp	371.90	0.02
pobgrgrs	pojuu	305.36	0.06
qopgobee	qocpn	294.92	0.02
wmpetali	wdaga	246.59	0.05
quxlegoa	qfjfg	222.79	0.21
quxbabai	qfjfg	182.69	0.00
favcopee	qfjfg	174.25	0.06
jipzasib	jieab	164.00	0.05
kibderua	qofcm	151.44	0.02
povwawaj	pojuu	141.13	0.16
pobrease	pojuu	138.47	0.04
kivremey	qpjag	136.09	0.02
bcpremae	bcdbu	129.60	0.00
favecvcp	qfjfg	107.93	0.07
ggpzamai	ggmer	92.09	0.05
pobmelat	arinadm	69.38	0.12
bckmimoj	qfjfg	66.52	0.00
povrucif	poxlp	62.49	0.00
pobinini	pojuu	53.38	0.00
qoaarecl	qofcm	42.99	0.01
webzucaa	wenzu	35.02	0.03
iapgarue	iaegr	23.77	0.04
qobmimuj	lgsgi	20.96	0.00
webogare	arinadm	17.01	0.00
upetralanda001	wdaga	14.40	0.05
wapgoesj	wakgg	6.92	0.02
mapalmau	magps	6.20	0.00
qfbloala	qfala	2.80	0.00
cixesesb	poxlp	2.64	0.02
ccpsoeta	jieab	2.11	0.00
qfbbaprj	qfila	1.86	0.04
bcpcacaa	mimam	1.28	0.01
poblairo	poxlp	0.42	0.00
baxakake	poxlp	0.18	0.39
qfbloala	qffca	0.15	0.03
pobmabej	pojuu	0.09	0.00
mapmemam	qtftp	0.03	0.00
bcpmamza	qfjvv	0.00	0.00

Table 2: Calculated time and waiting time in days of the groups.

GROUP	Calculated Days	Waiting Time
poahh	3140.49	0.28
waets	2926.78	0.09
potss	1983.03	0.50
qorzz	1317.27	0.33
pojju	1286.85	0.05
waars	1073.57	0.09
qfjfg	754.18	0.10
poxlp	437.63	0.01
qffca	433.61	0.04
qocpn	294.92	0.02
wdaga	260.99	0.05
qofcm	194.43	0.02
jieab	166.11	0.01
qpjag	136.09	0.02
bcdbu	129.60	0.00
ggmer	92.09	0.05
arinadm	86.39	0.04
wenzu	35.02	0.03
iaegr	23.77	0.04
lgsgi	20.96	0.00
wakgg	6.92	0.02
magps	6.20	0.00
qfala	2.80	0.00
qfila	1.86	0.04
mimam	1.28	0.01
qtftp	0.03	0.00
qfjvv	0.00	0.00

Pendolo

This month 162 computing days were used in **Pendolo** and the the average use of the cluster was 7 %. Since the first of December 3634 computing days were used and the the average use of the cluster was 18 %. The figure shows the usage of Pendolo along the month. In the first table the usage of each user is shown. The third column indicates all the time each user has used for calculation during this month. The fourth column shows the average time that each job was waiting before the it started running, in days units. In the second table, the same data as in table 1 collected by group is shown.

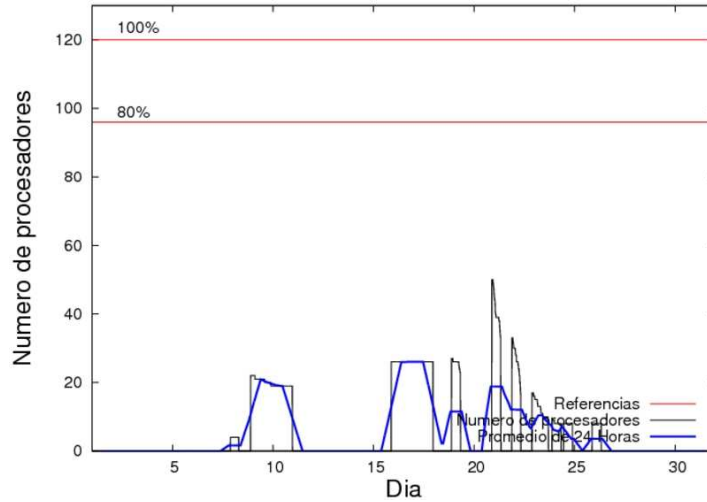


Figure 2: Cluster use. The blue line is a 24 hours average.

Table 3: Calculated time and waiting time in days of the users.

USER	GROUP	Calculated Days	Waiting Time
mtpmafel	mtgfa	97.38	0.27
jtppragg	jtjob	64.18	0.14

Table 4: Calculated time and waiting time in days of the groups.

GROUP	Calculated Days	Waiting Time
mtgfa	97.38	0.27
jtjob	64.18	0.14

Ikerbasque machine

The service has access to 206 xeon cores in this machine, which are older than Arina's ones. The codes of only few big users is maintained there to optimize the maintenance time. This month 2429 computing days were used in **Ikerbasque** machine and the the average use of the cluster was 38 %. Since the first of December 10535 computing days were used and the the average use of the cluster was 71 %. In the first table the usage of each user is shown. The third column indicates all the time each user has used for calculation during this month. The fourth column shows the average time that each job was waiting before the it started running, in days units. In the second table, the same data as in table 1 collected by group is shown.

Table 5: Calculated time and waiting time in days of the users.

USER	GROUP	Calculated Days	Waiting Time
scpzuola	qorzz	1861.95	1.51
pobmelat	arinadm	500.45	0.64
pobmugoj	pojuu	66.67	3.25

Table 6: Calculated time and waiting time in days of the groups.

GROUP	Calculated Days	Waiting Time
qorzz	1861.95	1.51
arinadm	500.45	0.64
pojuu	66.67	3.25