

Estadistics for June/2019

July 1, 2019

Arina

In this brief document we show the usage of arina during June. This month 100076 computing days were used and the the average use of the cluster was 90 %. Since the first of December 645988 computing days were used and the the average use of the Arina cluster was 82 %. The figure shows the usage of Arina along the month. In the first table the usage of each user is shown. The third column indicates all the time each user has used for calculation during this month. The fourth column shows the average time that each job was waiting before the it started running, in days units. In the second table, the same data as in table 1 collected by group is shown.

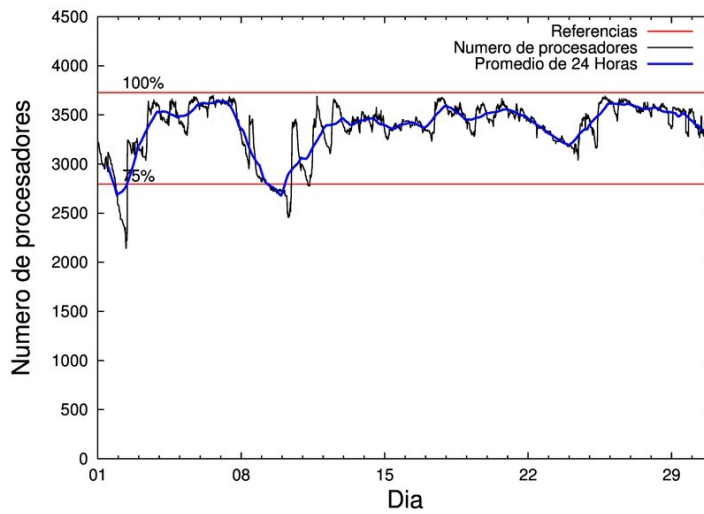


Figure 1: Cluster use. The blue line is a 24 hours average.

Table 1: Calculated time and waiting time in days of the users.

USER	GROUP	Calculated Days	Waiting Time
povhehea	poahh	16059.05	1.21
qovzaxxr	polymat	15595.31	0.57
poamaxg	polymat	12088.87	0.49
povwawaj	pojoo	8925.88	0.62
poaugbia	pojoo	8071.89	0.13
poairurm	polymat	5483.58	0.83
povpisim	pomps	3887.92	0.02
pobladej	poxlp	3454.85	0.16
qfpmamoh	qfila	2696.79	0.05
quxtaxxs	polymat	2669.20	0.27
povrucif	polymat	2582.32	0.08
sckahnom	potmb	1639.30	0.58
scavinam	poemg	1243.73	0.05
csazusej	nanogune	1140.33	0.49
kibderua	qofcm	1071.79	0.00
pobmugoj	pomps	976.74	0.07
poagafrm	pojoo	769.02	0.22
faacalea	qfjfg	762.31	0.14
ciaalece	pojoo	700.84	0.03
qobcacea	qocpn	689.79	0.01
poazago	potmb	653.00	0.00
poajejec	polymat	587.17	0.04
kixgrazr	potmb	530.72	0.01
qfpesmai	qfila	510.91	0.01
favcopee	qfjfg	491.66	0.32
pobgrgrs	pomps	491.40	0.00
poanacuj	polymat	477.90	0.09
poarloi	pojoo	469.47	0.03
popporiv	poxlp	429.54	0.04
bcpliolj	bgjbp	399.88	0.28
ciazuulm	pojoo	398.94	0.02
kibderua	qobl	309.28	0.00
qobpamap	qocpn	268.23	0.02
quaduree	qfila	258.75	0.02
qubhohol	qocpn	236.12	0.01
poaurura	poxlp	232.87	0.01
quaqugaj	qfila	216.31	0.00
bgpjiagd	bgjbp	204.46	0.51
pobtxe01	poxlp	187.12	0.01
pobxlp01	poxlp	173.49	0.13
naplodud	nanogune	168.50	0.01
scpridei	qofcm	160.88	0.00
webogare	arinadm	158.88	0.01
povmieci	pojoo	152.80	0.02
kiasomal	qocpn	137.70	0.02
doxcarei	poemg	127.94	0.02
qopgobee	qocpn	115.05	0.00

quainbea	qfjfg	109.19	0.05
poasibrd	poxlp	107.08	0.02
faaatnaa	faraz	90.70	0.02
ciaansap	pojoo	90.14	0.07
dixsasam	pojoo	62.36	0.00
pobfoese	poxlp	57.14	0.00
quamearx	qfila	56.85	0.03
bckmimoj	qfjfg	55.99	0.00
qoprualg	qofpg	55.95	0.00
fabusgui	qfjfg	54.19	0.09
ciaolarb	pojoo	52.11	0.00
kixsasal	pojoo	46.88	0.12
qfbalale	qfjfg	36.18	0.01
qubcaxxc	qfjfg	35.35	0.18
pobrease	potmb	22.93	0.01
enblairo	egune	15.79	0.00
faavzae	qfila	14.15	0.00
pobmabej	potmb	11.85	0.02
debvamae	debjo	9.56	0.01
quarulob	qfjfg	8.27	0.00
pobmelat	arinadm	7.81	0.01
qoapefuh	qocpn	7.55	0.07
wmpetali	wdaga	4.68	0.11
biadecum	bicgm	2.38	0.04
fsbikasl	fsfsb	1.19	0.72
kiaurbao	poxlp	1.06	0.00
enxararo	egune	0.18	0.00
poblairo	poxlp	0.08	0.00
popugurj	pojoo	0.05	0.00
pobsisis	pomps	0.04	0.00
qoparaya	qofcm	0.03	0.00
qfpbaprij	qfila	0.00	0.00
oibargia	oijgc	0.00	0.00
inagaaro	oijgc	0.00	0.00

Table 2: Calculated time and waiting time in days of the groups.

GROUP	Calculated Days	Waiting Time
polymat	39484.35	0.27
pojoo	19740.39	0.14
poahh	16059.05	1.21
pomps	5356.09	0.05
poxlp	4643.25	0.07
qfila	3753.75	0.02
potmb	2857.80	0.07
qfjfg	1553.15	0.16
qocpn	1454.43	0.01
poemg	1371.67	0.05
nanogune	1308.84	0.34
qofcm	1232.69	0.00
bgjbp	604.34	0.39
qoabl	309.28	0.00
arinadm	166.69	0.01
faraz	90.70	0.02
qofpg	55.95	0.00
egune	15.98	0.00
debjo	9.56	0.01
wdaga	4.68	0.11
bicgm	2.38	0.04
fsfsb	1.19	0.72
oijgc	0.00	0.00

Arina Data Storage Top Users

In the following graph we plot the users having more data in Arina in the last month. If you appear in this graph, we strongly encourage you to reduce your data in Arina.

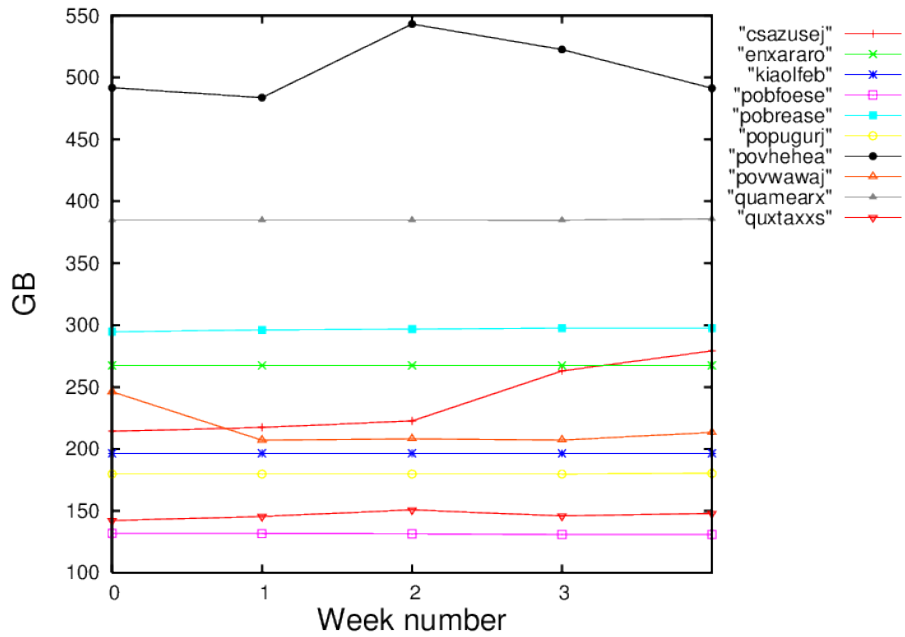


Figure 2: Storage evolution in the last month in GB.