

# Estadistics for June/2018

July 1, 2018

## Arina

In this brief document we show the usage of arina during June. This month 85180 computing days where used and the the average use of the cluster was 76 %. Since the first of December 625051 computing days where used and the the average use of the Arina cluster was 79 %. The figure shows the usage of Arina along the month. In the first table the usage of each user is shown. The third column indicates all the time each user has used for calculation during this month. The fourth column shows the average time that each job was waiting before the it started running, in days units. In the second table, the same data as in table 1 collected by group is shown.

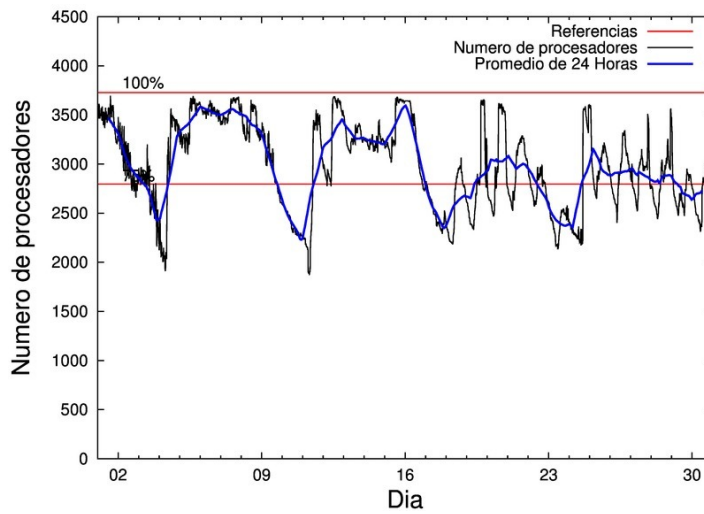


Figure 1: Cluster use. The blue line is a 24 hours average.

Table 1: Calculated time and waiting time in days of the users.

USER	GROUP	Calculated Days	Waiting Time
qovzaxxr	polymat	21150.40	0.44
povhehea	poahh	16081.91	0.77
fabusgui	qfjfg	4009.21	0.19
pobladej	poxlp	3899.19	0.22
pobmugoj	pomps	3708.02	0.02
popugurj	pojju	3273.28	0.02
enxararo	egune	3165.84	0.11
povrucif	polymat	2789.23	0.05
poairurm	polymat	2229.21	0.51
povpisim	pomps	1823.36	0.02
poajejec	polymat	1711.51	0.01
poaganau	polymat	1597.75	0.15
pobgrgrs	pomps	1561.58	0.00
qopgobee	qocpn	1317.60	0.00
poaugbia	pojju	1282.31	0.07
faacalea	qfjfg	1102.76	0.02
kiadadag	pojju	1090.27	0.03
pobrease	potmb	991.77	0.00
poamaxg	polymat	856.94	0.08
pobfoese	poxlp	809.86	0.00
poasasab	polymat	798.18	0.02
quxlegoa	qfjfg	761.47	0.25
dixsasam	pojju	733.19	0.09
qobsalae	qambm	665.65	0.00
poalocad	polymat	657.40	0.02
poaorloi	pojju	605.95	0.03
enbxilij	egune	558.04	0.13
quainbea	qfjfg	543.09	0.05
unxloesg	potmb	537.34	0.09
sgibaasj	vgsgi	506.98	0.31
enblairo	egune	455.25	0.27
povwawaj	pojju	428.37	0.15
ciazuulm	pojju	427.45	0.02
favecvep	qfjfg	329.62	0.04
kiasomal	qocpn	305.98	0.01
poblairo	poxlp	271.34	0.03
qobpamap	qocpn	268.05	0.00
qfpmamoh	qfila	257.52	0.02
kibderua	qofcm	229.29	0.00
poagafm	pojju	155.12	0.03
quamearx	qfila	146.24	0.00
poasibrd	poxlp	141.39	0.00
csazusej	nanogune	139.52	0.01
qfbloala	qfjfg	132.19	0.02
scavinam	poemg	120.44	0.17
qoapefuh	qocpn	109.15	0.00
kixgrazr	potmb	86.80	0.00

doxcarei	poemg	64.31	0.03
kiaurbao	poxlp	57.23	0.00
mapmemam	megps	52.02	0.02
qoprualg	qofpg	37.79	0.00
wapgoesj	wakgg	33.36	0.00
qfbleoni	qfjfg	22.93	0.00
ciagecee	ccbsa	20.36	0.00
qobzazag	qocpn	12.73	0.00
poaszsze	poxlp	10.90	0.02
qfpbaprij	qfila	8.58	0.00
qobconde	qofcm	6.58	0.00
pobcacad	pojoo	6.20	0.00
quarafam	qfjfg	4.87	0.23
poanacuj	polymat	4.33	0.00
qfpesmai	qfila	3.14	0.00
wuppobam	wuebp	3.07	0.00
cixesgos	pojoo	2.98	0.00
kixsasal	pojoo	2.22	0.00
bgpmuhoi	bcnsc	1.46	0.00
poarugua	pojoo	1.39	0.00
povracoe	pomps	0.24	0.00
poazago	potmb	0.17	0.00
poatealx	pojoo	0.01	0.00
qopcomof	qofcm	0.00	0.00

---

Table 2: Calculated time and waiting time in days of the groups.

GROUP	Calculated Days	Waiting Time
polymat	31794.96	0.09
poahh	16081.91	0.77
pojoo	8008.78	0.02
pomps	7093.20	0.02
qfjfg	6906.14	0.10
poxlp	5189.92	0.11
egune	4179.13	0.14
qocpn	2013.51	0.00
potmb	1616.08	0.02
qambm	665.65	0.00
vgsgi	506.98	0.31
qfila	415.48	0.00
qofcm	235.87	0.00
poemg	184.75	0.17
nanogune	139.52	0.01
megps	52.02	0.02
qofpg	37.79	0.00
wakgg	33.36	0.00
ccbsa	20.36	0.00
wuebp	3.07	0.00
bcnsc	1.46	0.00

## Arina Data Storage Top Users

In the following graph we plot the users having more data in Arina in the last month. If you appear in this graph, we strongly encourage you to reduce your data in Arina.

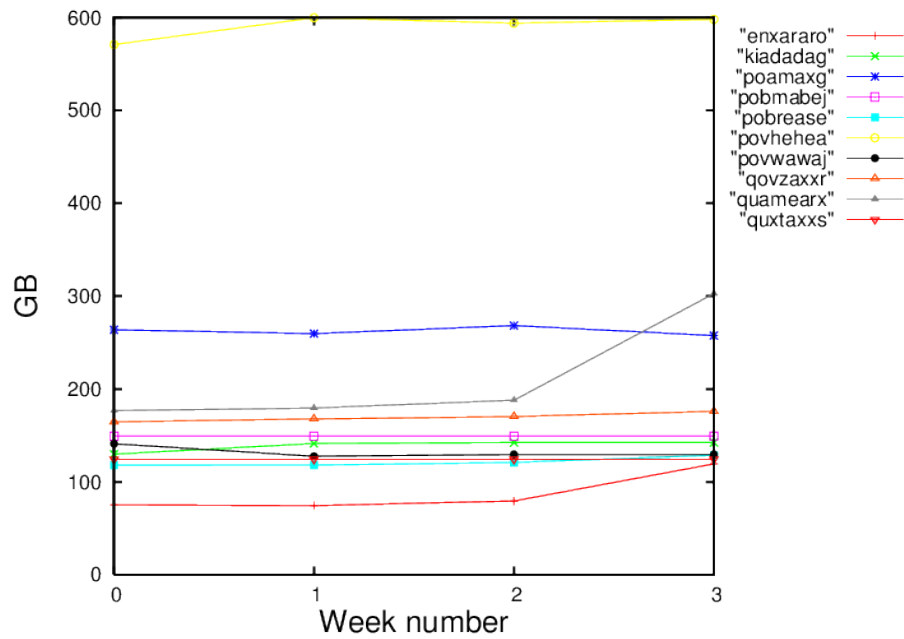


Figure 2: Storage evolution in the last month in GB.